



CARVER COUNTY PARKS

11360 Highway 212 West, Suite #2
Cologne, MN 55322
Phone (952) 466-5250 Fax (952) 466-5223
www.co.carver.mn.us/parks

Division of Public Works

11360 Hwy. 212 West, Suite #1
Cologne, MN 55322
Phone (952) 466-5200
Fax (952) 466-5223

Park Commission Meeting

Wednesday, September 12th, 2012

6:30 p.m.

Regular Meeting

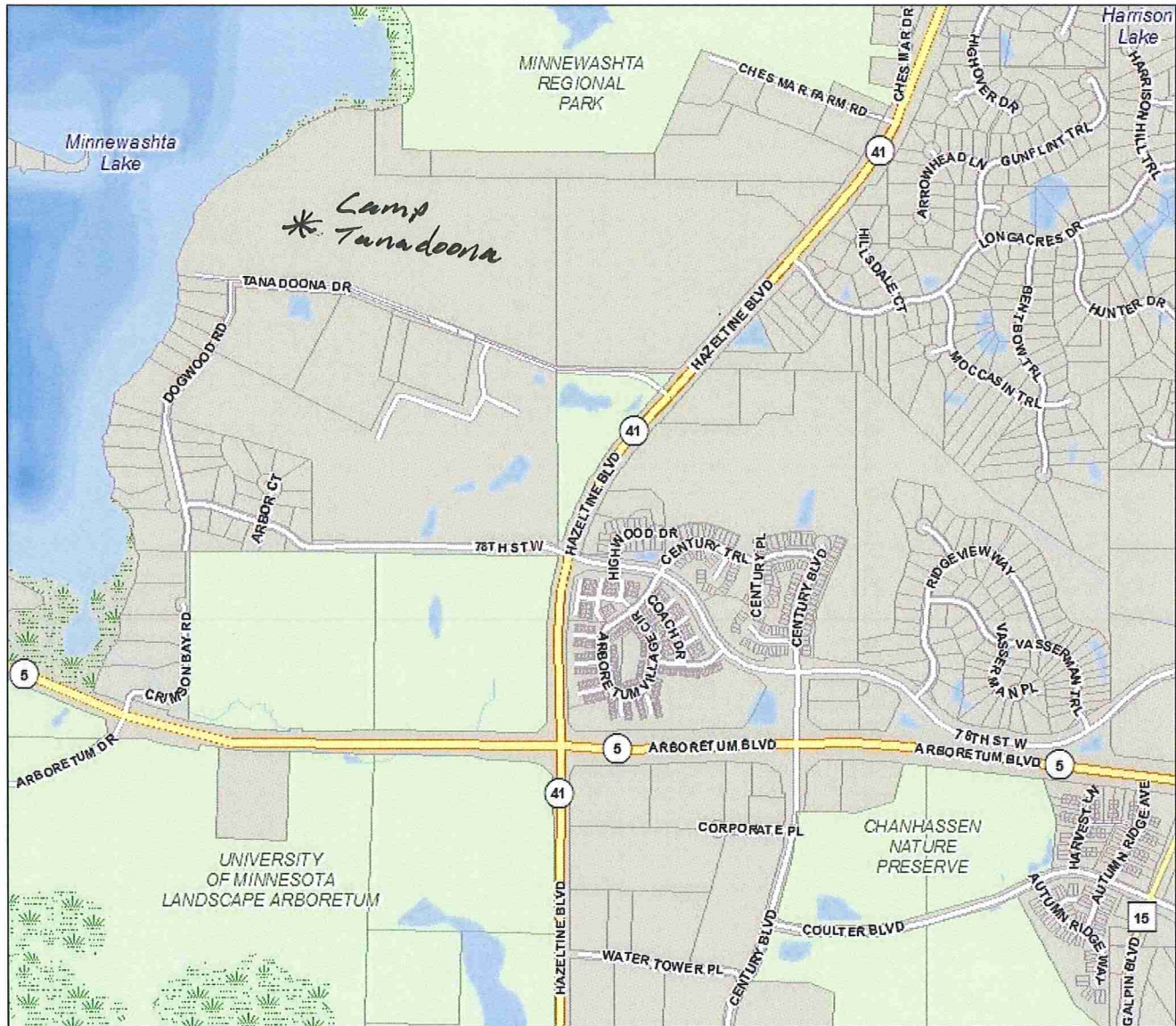
**Camp Tanadoona, 3300 Tanadoona Drive,
Chanhausen, MN**

Agenda

- 1) Introductions of new Park Commission Members (6:30 p.m.)
- 2) Welcome and Tour of Camp Tanadoona, 6:40 p.m.
- 3) Call Meeting to Order Roll Call (7:10 p.m.)
- 4) Approval of the July 10th, 2012 Regular Meeting Minutes (7:11 p.m.)
- 5) Additions or Deletions to the Agenda (7:12 p.m.)
- 6) Approval of Agenda (7:13 p.m.)
- 7) Open to the Public (7:14 p.m.)
- 8) New Business (7:15 p.m.)
 - a. Review and Recommendation of the 2013 Parks Budget
 - b. Recommendation to Issue Annual Vehicle Permits to County Board Members
- 9) Staff Reports (8:00 p.m.)
 - a. Aquatic Invasive Species Program
 - b. Lake Minnewashta Regional Park and TH 41 Trail and Underpass
 - c. Phase II of the Dakota Rail Regional Trail
 - d. Southwest Regional Trail
 - e. Events and Activities
- 10) Commission Member Reports (8:30 p.m.)
- 11) Set Next Meeting Date (8:35 p.m.)
- 12) Adjourn Meeting (8:40 p.m.)

Please note if a Commission Member cannot attend the meeting, please call the Park Office at 466 – 5250.

CARVER COUNTY PROPERTY INFORMATION



**CARVER
COUNTY**

Map created on 9/7/2012

Disclaimer: This information is to be used for reference purposes only. Carver County does not guarantee accuracy of the material contained herein and is not responsible for misuse or misinterpretation. The preceding disclaimer is provided pursuant to Minnesota Statutes 466.03, Subd. 21 (2000), and the user of this service acknowledges that the County shall not be liable for any damages, and expressly waives all claims, and agrees to defend, indemnify, and hold harmless the County from any and all claims brought by User, its employees or agents, or third parties which arise out of the user's access or use of data provided.

Legend

Street View Active

Draft Meeting Minutes July 10, 2012

Members Present: Jerald Moja, Thomas Hermann, Cindy Dobratz, and Myron Karki

Staff Present: Marty Walsh

Public Present: Representatives of the Minnesota Astronomical Society- Merle Hiltner, Mark Jobs, Mark Tupker, Dave Faulkner

CALL TO ORDER - Moja called the meeting to order at 7:35 p.m.

MINUTES - Karki motioned to approve the minutes of the June 19th special meeting. Hermann seconded the motion. Motion passed 4-0.

AGENDA- Herman motioned to approve agenda. Karki seconded the motion. Motion passed 4-0.

OPEN TO THE PUBLIC- N/A

OLD BUSINESS-

A. Request to Construct Building(s) at the Onan Observatory

Merle Hiltner of the Minnesota Astronomical Society (MAS) reviewed with the Park Commission plans to construct two additional buildings at Baylor Regional Park next to the existing Onan Observatory. Buildings to be constructed include an additional observatory and classroom. He explained what is included in the project in addition to the structures such as walkways, design elements and color scheme of the buildings.

Karki asked about the schedule. Hiltner explained that MAS would be ready to proceed in a couple of weeks.

Walsh asked MAS representatives about financing for the project. Hiltner provided detailed project summary reports showing the costs for materials and supplies. He further stated that MAS has the funds on hand to proceed with the construction. In addition, he explained that MAS has the ability to maintain the structures through annual donations from the Onan Family and Onan Foundation. Other sources of revenue come from membership dues, donations from members, and donation from Medtronic. MAS has several funds which include a Special Projects Fund, General Fund, and Onan Foundation.

Walsh provided a staff report further detailing the sizes of the buildings, changes that MAS had made to make the buildings more consistent with one another incorporating architectural elements and similar building materials.

He also provided for the commission's consideration Amendment No. 1 to

the Lease Agreement with the Minnesota Astronomical Society. This amendment allows for the construction, ongoing operations, maintenance and repair of an additional observatory and classroom buildings.

Karki moved to approve staff recommendation requesting the County Board approve Amendment No. 1, to the lease agreement between Carver County and the Minnesota Astronomical Society contingent on M.A.S. receiving all necessary permits associated with the construction of the building.

Motion passed 4-0.

Staff Reports

- a. Request for Aquatic Invasive Species inspections at Lake Bavaria.

Staff has been asked to prepare a Board Action item for the July 24, 2012 County Board Meeting. The Board will consider extending inspection service to Lake Bavaria. The homeowners association has raised private funds to help support the inspection program.

- b. Lake Minnewashta Regional Park TH 41 Trail and Underpass Project

Construction activity to create the retaining walls along T.H. 41 is nearing completion. Rough grading of the trail through the park is approximately 70% complete. Aggregate surfacing has begun on a portion of the trail within the park.

- c) Construction activity for Phase II of the Dakota Rail Regional Trail has begun. Crushing of the ballast material west of New Germany got underway Monday, July 9th.

- D) Upcoming events and activities include:

- **July 9th - Camp Blast - Climbing at Lake Minnewashta Regional Park 9am-5pm**
- **July 11th - Family Archery Night 5:30-7:30 at Lake Minnewashta Regional Park**
- **July 14th - Onan - Public Star Gazing at Baylor Regional Park 7-10 p.m.**
- **July 17th-19th - Grandparent and Me Mini Day Camp at Lake Minnewashta Regional Park**
- **July 21st - Canoeing 101 at Lake Minnewashta Regional Park 10 am - Noon**
- **July 20-22 - 5th Annual Camping with the Stars at Baylor Regional Park**
- **July 28th - Onan - Public Star Gazing at Baylor Regional Park 7-10 p.m.**
- **July 29th - Family BBQ and Disc Golf at Baylor Regional Park 4-8 p.m.**
- **August 1st and 8th - Kids Archery Camp 10 am - 11:30 at Lake Susan**
- **August 3rd - Full Moon Canoe at Lake Minnewashta Regional Park 7-9 pm**
- **August 4th - Campfire Program at Baylor Regional Park 7:30 p.m.**
- **August 6th - Camp Blast - Fishing at Lake Minnewashta Regional Park 9am-5pm**
- **August 11th - Onan - Public Star Gazing at Baylor Regional Park 7-10 p.m.**

NEXT MEETING – August 2012 Meeting.

It was discussed that the August 8, 2012 meeting could take place in the City of New Germany in order to review construction activity pertaining to the Dakota Rail Regional Trail

ADJOURN - Herman moved to adjourn the meeting at 8:36 p.m. Motion was seconded by Karki and passed 4 to 0.



CARVER COUNTY PARKS

11360 Highway 212 West, Suite 2
Cologne, MN 55322-8017
Phone (952) 466-5250 Fax (952) 466-5223
www.co.carver.mn.us/parks

Division of Public Works

11360 Hwy. 212 West, Suite 1
Cologne, MN 55322-8016
Phone (952) 466-5200
Fax (952) 466-5223

DIRECTORS REPORT

September 12th, 2012

REGULAR PARK COMMISSION MEETING

To: Members of the Park Commission
From: Martin Walsh, Parks Director
CC: Lyndon Robjent, County Engineer
Tim Lynch, County Commissioner
Date: 9/7/2012
Re: September 12, 2012 Regular Park Commission Meeting

Welcome New Members:

The County Board has appointed the following representatives to the County Park Commission: Ron Trick of Norwood Young America, Joshua Ives of Chaska, and Jim Manders of Chanhassen.

New Business:

A) Review 2013 Budget Summary

Attached for the commission's review and information is the 2013 Parks Department Budget Summary. The Summary highlights revenue and expenses of the Department. Also included are workload indicators showing increases pertaining to visits to the County's parks and trails and increases in sales of permits over the last 5 years. The budget summary further provides information on planned capital improvement projects for operating capital, land acquisition, engineering, design and construction activity. At the end of the summary goals and challenges are identified for 2013 and beyond.

A slight decrease in revenue (-.06%) is projected in large part due to a leveling off of revenue received through park fees. As stated in the summary, in previous years the department had seen steady increases in revenue derived from park fees. In 2011 a leveling off of revenue was experienced. Further, revenue to be received from the State for operations and maintenance is also conservatively estimated as the State has projected a revenue shortfall. Operating expenses increased by 5.85%. The increase is primarily due to continuing seasonal staffing for Aquatic Invasive Species (AIS) Inspectors. In 2012, budget amendments were authorized to provide funding for AIS staffing at Lake Minnewashta Regional Park and at Lake Bavaria. The funds were matched by lakeshore owners and the Minnehaha

Creek Watershed District. The County Board has also budgeted funds for AIS inspection service for 2013.

The 2013 Parks budget continues service levels at the same level of service as compared to 2012. Further information is contained on the Carver County Public Works 2012/2013 Budget Comparison Spreadsheet.

A summary of the Carver County Regional Railroad Authority's (CCRRA) budget is also provided for the commission's review and information. The Parks Department oversees the operations and maintenance of the CCRRA's properties of the former Dakota Rail Line and Union Pacific Rail Line corridors. Further, these railroad corridors are being developed for regional trail purposes.

With the addition of 15 miles of new trails and in order to maintain the railroad corridors for future transportation, a new .5 FTE has been budgeted from CCRRA levy. This .5 FTE is to be matched with another .5 FTE from Public Works Road and Bridge Fund. The new position would work half- time in parks and half- time with the Highways Department for road maintenance and during snow plowing operations.

The CCRRA Levy remains unchanged at \$120,000 per year.

Recommendation: It is requested that the Park Commission recommend approval the 2013 Parks Budget.

B) Recommendation to Issue Annual Vehicle Passes to County Board Members

County Board Members should feel encouraged to visit County Park areas without the worry of not having a vehicle permit and risking possible patrol stops for permits while in our county parks. There are lots of programs, ongoing maintenance operations and construction projects that board members should feel comfortable accessing. Providing annual vehicle permits to board members is a way in which they would be properly identified in the park areas and reduces the need for explanations as to who they are at park entrance points. Further, board members are encouraged to access the park areas to see facilities and services that area provided to the public.

Recommendation: It is requested that the Park Commission recommended Board Members be issued two annual vehicle permits for the purposes of having access to County Park facilities.

Staff Reports

A) Aquatic Invasive Species Inspections

AIS inspection service is being provided at lakes; Waconia, Hydes, Reitz, Bavaria and Minnewashta from Saturday, May 12th until Sunday, September 16th. The County employed ten part-time Level I Inspectors. As of September 4th, Carver County Staff have inspected nearly 4,500 watercraft and staffed over 2,800 hours at lake accesses. Inspection data shows 2013 watercraft inspected at Lake Minnewashta, 2,131 at Lake Waconia and 333 at Lake Bavaria. These numbers are based on shift summary sheets, but don't necessarily account for all inspections.

Inspection hours were different from lake to lake. Lake Minnewashta was a seven day a week, 15 ¼ hour a day program. At the Lake Waconia DNR public access inspections took place 12 hours per day Friday-Sunday. Inspections at Lake Bavaria, Hydes and Reitz occurred on either a Saturday or Sunday for an 8 hour shift.

Starting July 28th, additional inspection service was provided at Lake Bavaria. The hours of operation are similar as compared to the inspection program running at Lake Minnewashta.. The County contracted with VOLT Workforce Solutions to cover a 15 hour a day, Monday-Friday

schedule. VOLT provided two Level I Inspectors to fulfill these needs. County inspectors covered weekend hours, each day providing 15 hours of service.

County inspectors have reported three cases where watercraft had Zebra Mussels attached. Of the three cases, two cases were at Lake Minnewashta in July, and the other case was at Lake Waconia on Labor Day.

B) Lake Minnewashta Regional Park TH 41 Trail and Underpass Project

Construction continues to progress. Retaining walls are substantially complete; approximately three quarter mile of trail has been paved inside the park. The remaining three quarter mile of trail inside the park has been rough graded. Rough grading of the trail along TH 41 has taken place from Minnetonka Middle School West to the Chanhassen Well Station, which is approximately one half mile in length. An additional one half mile of trail along TH 41 is yet to be rough graded. Preparation for installation of the box culvert/underpass is underway. TH 41 will be closed to thru traffic beginning Monday, September 10, 2012. The road may be closed for a period of 14 calendar days. The project appears to be on track for completion by the end of the year.

C) Dakota Rail Regional trail Phase II

Construction activity for Phase II is well underway. Aggregate surfacing has been completed on the majority of the 5.5 mile trail segment. Paving of the majority of the trail is tentatively planned between September 10th and September 21st. Portions of the trail near the bridges will remain unpaved until the bridges are retrofitted or reconstructed with decking and railings. Work is just getting underway at the trailhead facility to construct the parking area and related plaza for the kiosk structure.

D) Southwest Regional Trail

Engineering work for the Southwest Regional Trail is progressing. The engineer is preparing final exhibits that will identify land needed for the trail along County Road 61 in Chaska.

E) Upcoming events and activities include:

September 8th - Onan - Public Star Gazing at Baylor Regional Park 7-10 p.m.

September 9th - Parent/Child Archery Session #3 at Lake Waconia Regional Park 3-4 pm (4 weeks)

September 9th - Yoga in the Park Session #1 at Lake Minnewashta Regional Park

September 15th - Campfire Program at Baylor Regional Park 6:30 p.m.

September 15th - Youth Geocaching at Lake Ann Park 2:00pm-4pm (Register with Chanhassen Park & Rec)

September 16th - Yoga in the Park Session #2 at Lake Minnewashta Regional Park

September 22nd - Onan - Public Star Gazing at Baylor Regional Park 7-10 p.m.

September 23rd - Yoga in the Park Session #3 at Lake Minnewashta Regional Park

September 29th - Campfire Program at Baylor Regional Park 6:30 p.m.

September 30th - Autumn Full Moon Canoe at Lake Minnewashta Regional Park 6-8 pm

September 30th - Yoga in the Park Session #4 at Lake Minnewashta Regional Park

October 1st - Parent/Child Archery Programs at NYA Elementary Gym 6:30-7:30 p.m. (4 weeks)

October 4th - Indoor Parent/Child Archery Session #4 at Waconia Ice Arena 7-8 pm (4 weeks)

October 6th - Onan - Public Star Gazing at Baylor Regional Park 7-10 p.m.

October 13th - 9th Annual Chili Cookoff at Baylor Regional Park

Parks Department

The Parks Department of the Public Works Division is under the supervision of the Parks Director. The Parks Director works in an independent manner on the ongoing planning, development, operations, maintenance of three existing Regional Parks, one public lake access, one undeveloped county park under the jurisdiction of Carver County, and 15 miles of railroad corridor under the jurisdiction of the Carver County Regional Railroad Authority. Six full-time employees, along with approximately 20-30 seasonal workers, contracted lifeguards, caretakers and campground hosts, comprise the development, operations, and maintenance personnel of the Parks Department.

Annually, more than 443,900 user visits are recorded at the County regional park and trail facilities. The Carver County Parks System provides the public with a wide variety of recreational opportunities. The facilities offered include: swimming beaches, hiking trails, fishing piers, cross country ski trails, picnic areas and shelters, nature trails, creative play facilities, tot lots, ball fields, tennis courts, open play fields, volleyball courts, boat accesses, an off-leash dog area, disc golf, family camping, group camping sites and 9 miles of developed regional trails.

Budget Highlights

Parks Department						
Budget Summary	2011 Actual	2012 Budget	2013 Requested	2013 Approved	% Change 2012-2013	Change In Levy
Revenue total	(370,698)	(361,690)	(359,490)		-0.61%	32,906
Expenditure total	892,858	924,624	955,330		3.32%	
Levy dollars needed	522,160	562,934	595,840		5.85%	

Six full-time employees, along with approximately 20-30 seasonal workers, contracted caretakers and campground hosts, comprise the development, operations, and maintenance personnel of the Parks Department. The chart shows the number of Full-Time Equivalent (FTE) employee positions for 2012 at 9.59, which is the same as 2013.

Parks Department		
Position:	2012 Actual FTEs	2013 Requested FTEs
Parks Director	1.00	1.00
Parks and Trails Supervisor	1.00	1.00
Lead Parkkeeper	1.00	1.00
Account Clerk	1.00	1.00
Parkkeeper	2.00	2.00
Part-Time Seasonal	3.59	3.59
Department Total	9.59	9.59

Primary sources of revenue for the Parks Department include grants and, fees for services. Carver County receives three types of grants through the Metropolitan Council. These grants include Operation and Maintenance, Capital Improvement, and Parks and Trails Funds.

Intergovernmental Revenue Operations and Maintenance: For 2013, it is estimated that the County would receive approximately \$87,800 in Operation and Maintenance Funding. The number may be conservative but anticipates that the County would not receive the projected amount of approximately \$100,000 as the State continues to deal with projected budget shortfalls. A portion of the operations and maintenance funding distributed through the

Metropolitan Council is provided by the State. In the past, lottery in lieu funds and the State have provided Carver County with approximately 9% of operations and maintenance funding for the regional parks and trail it operates. Securing this assistance from the State has been an ongoing effort of the Metropolitan Council and the Metropolitan Regional Park Implementing Agencies since 1984.

Intergovernmental Revenue Capital Improvements: Capital Improvement Funds distributed through the Metropolitan Council are not anticipated for 2013. Capital improvement funding is typically considered during the state bonding sessions during even-numbered years. In 2012, the County is to be awarded \$191,000 to reimburse the County for past land acquisition at Lake Waconia Regional Park. This amount is substantially lower than the 2010 biennium amount of \$423,000. The lower-than-anticipated amount will delay reimbursement to Carver County and delay future capital improvement work in the County Park System.

Intergovernmental Revenue Parks and Trails: Parks and Trails Funds have increased from \$247,000 in 2011 to \$266,000 in 2012 (SFY 2013). These funds have been utilized as local match to federally funded trail projects of the Dakota Rail Regional Trail and the Lake Minnewashta Regional Park –TH 41 Trail and Underpass project. Funds are generated from the constitutional amendment which increased funding for the Outdoors, Clean Water, Parks and Trails and the Arts.

Revenue from Park Fees: Fees from park fees for services are expected to remain nearly constant at \$252,000, which is nearly the same amount as was received in 2011. In 2011 the department saw a leveling off of revenue collected through fees as compared to previous years which had shown steady increases in revenue generated each year.

Operating Expenses: Notable requested changes to operating expenses include additional staffing. It is requested that a half-time maintenance person be added to maintain approximately 16 miles of newly constructed trails from the Carver County Regional Railroad Authority levy. This 0.50 FTE position request is to match a 0.50 FTE position request from the Highways Maintenance Department to maintain county roadways during the winter months.

In 2012, a pilot program to provide aquatic invasive species service and inspectors was conducted at Lake Minnewashta Regional Park. A budget amendment was authorized for the service. Should the County decide to provide the service, a budget amendment to the 2013 Budget would be needed. Other line items are projected to remain at the previous year's levels.

Training, Professional Maintenance: Programmed training and professional maintenance opportunities include technical training for herbicide and pesticide use, courses on trees, shrubs, and invasive species, and attendance at technical seminars put on by the Minnesota Parks and Recreation Association and Minnesota Park Supervisors Association. Professional Maintenance includes annual conference at in-state conference of the Minnesota Recreation and Parks Association and an out of state conference to the National Counties Parks and Recreation Organization.

Capital Improvements: Requests for 2013 include the following:

Operating Capital: Maintenance Equipment needs include the replacement of a skid loader for excavation, loading of trucks, tree planting, grading, and snowplowing and beach maintenance. The compact size of a skid steer unit makes an ideal for many jobs within the park system. The skid loader is a basic piece of equipment and is needed for daily park operations.

The second equipment request is for a light duty utility vehicle. These utility vehicles are quite useful at maintaining beaches, transporting hand equipment and personnel into areas where larger vehicles would cause damage to the grounds saving wear and tear on turf. The use of the utility vehicles reduces the hours or mileage put on larger pieces of equipment which extends the life cycle of more expensive equipment. These vehicles are primarily used for trash removal, shelter and restroom maintenance, trail maintenance, small excavation projects, park and trail inspections.

Land acquisition: Funding for land acquisition is a part of the County's strategy to provide matching funds to assist with acquisitions funding provided by the Metropolitan Council for park and trail acquisitions. Current acquisition includes land needed for Waconia Regional Park and the County Road 10 Dakota Rail Regional Trail Connections and land needed for the Southwest Regional Trail Connection. Other possible acquisition areas are shown on the County's Comprehensive Plan.

Preliminary Engineering and Design: It is requested that funds be provided for preliminary engineering and design for park projects to gain better understanding of the costs to construct significant capital improvement projects and to make competitive grant applications for projects. Examples of capital improvement projects include a development program for Lake Waconia Regional Park, storm water management and bypass lane at Lake Minnewashta Regional Park, architectural services for buildings, and site plans. Examples of grant applications include the development of Transportation Enhancement Funds estimates for trail projects at CSAH 10, TH 5, the Southwest Regional Trail, and the development of natural resource management plans for park areas to better qualify for funding from the Lessard Sams Outdoor Heritage Council to restore, protect and enhance land set aside for preservation.

Construction: Southwest Regional Trail Connection in Victoria and Carver. In Victoria, construct and pave of a segment of the former railroad is planned from the Steiger Lake boat access parking drive west to Kirke-Lachen Park a distance of approximately three-fourths mile. In Chaska, construct and pave a one-third mile connection from the Minnesota River Bluffs regional Trail to and existing trail along Engler Blvd. These two segments represent the north and south end of the Southwest Regional Trail. Carver County has been awarded federal funding to construct the project. Federal funding is matched with a 20 percent construction participation. Additionally, the County is responsible for the design and engineering for the project.

Site and Grounds Improvements: Projects include the replacement of the Baylor Park Water Curtain or the restoration of the beach area to a vegetative shoreline. During the 2012 summer season, the beach at Baylor Park is being evaluated for use and the potential conversion of the

beach back to shore land as a more sustainable approach to providing water recreation for small water craft and fishing. Due to poor water quality, swimming could be eliminated from the lakeshore within the park.

Other site and grounds improvements include replacing the radiant heat in the Baylor Park shop and concrete and asphalt repairs at Lake Minnewashta Regional Park. Funding for these repairs and replacement is provided through user fees for park services.

Workload Indicators

As the chart indicates, documentation of increased use is seen in the sales of daily and annual vehicle permit sales and increased in shelter permits sold. For 2011, annual use estimates calculated by the Metropolitan Council indicate that 443,900 user visits were recorded at the three regional parks and the Dakota Rail Regional Trail administered by Carver County. The Addition of the Dakota Rail Regional Trail added 99,400 user visits in addition to adding a new 7- mile trail facility and the maintenance obligations which come with the trail such as pavement management, inspection, tree removal and trash removal services.

Permits Sold	2006	2011	Increase
Daily Vehicle Permits	9,523	14,533	52%
Annual Vehicle Permits	2,288	4,539	98%
Shelter Permits	166	207	24%

Goals, Objectives and Performance Measures

Parks Department Goal #1

Complete Construction of the Southwest Regional Trail Connection in the cities of Chaska and Victoria

Supports County Good #1: Create and maintain safe, healthy, and livable communities

Objective: In Victoria, construct and pave of a segment of the former railroad is planned from near the Steiger Lake boat access parking drive west to Kirke-Lachen Park a distance of approximately three-fourths mile. In Chaska, construct and pave a one-third mile connection from the Minnesota River Bluffs regional Trail to and existing trail along Engler Blvd.

Tasks:

- Complete final design.
- Acquire land needed for trail.
- Enter Into Operations Agreement with Three Rivers Park District.
- Bid project.
- Construct.

Measure of Performance Summary: In 2009, Carver County made application to the Federal Transportation Enhancement program for the Southwest Regional Trail Connection. The project was later awarded to the County in 2010. Preliminary design work and completion of the project memorandum occurred in 2011. Authorization to

conduct final design was provided in June of 2012. It is planned that once final engineering work is completed, appraisal of land needed for the project would be conducted and offers to property owners made. It is desired to have right-of-way acquired by the end of 2012. Bidding of the project is tentatively planned for January/February 2013 with construction activity to begin spring of 2013. Completion of the project is anticipated by the winter of 2013.

Concurrently through planning and construction process, it is planned that agreements would be entered into with Three Rivers Park District, Hennepin County Regional Railroad authority and potentially the cities of Chaska and Victoria for operations and maintenance pertaining to the trail segments.

Department Goal #2:

Acquire the last identified parcel within the acquisition master plan boundary of Lake Waconia Regional Park.

Supports County Good #1: Create and maintain safe, healthy, and livable communities.

Objective: Acquire land identified land for a public boat access, trail connection, scenic overlook, shore land preservation, and open space preservation.

Tasks:

- Develop a financial package involving the partners of the County, the Metropolitan Council and the State.
- Complete negotiations with landowner.

Measure of Performance Summary: Carver County has an Acquisition and Development Plans for Lake Waconia Regional Park. Consistent with these plans, the County has been working with the Metropolitan Council on the acquisition and development of the Lake Waconia Regional Park since 1996. More recently the County has engaged the Department of Natural Resources in discussions on land needed for a public boat access. If successful, the DNR would provide financing for the land needed for the public water access. The County and the Metropolitan Council would acquire land needed for a trail connection from the City of Waconia, lakeshore, conservation and buffer space between the active use area of the park and adjacent sub division.

Department Goal #3:

Complete site and Grounds improvement projects.

Supports County Good #1: Create and maintain safe, healthy, and livable communities.

Objective: Maintain existing infrastructure and park and recreation services.

Tasks: Baylor Park Beach:

- Determine customer satisfaction of the beach without the water curtain.
- Determine customer satisfaction if beach is eliminated.

- Projects include the replacement of the Baylor Park Water Curtain or the restoration of the beach area to a vegetative shoreline. During the 2012 summer season, the beach at Baylor Park is being evaluated for use and the potential conversion of the beach back to shore land as a more sustainable approach to providing water recreation for small watercraft and fishing. Due to poor water quality, swimming could be eliminated from the lakeshore within the park.
- Propose recommendation to continue or discontinue beach services based on customer satisfaction.

Baylor Park Shop Radiant Heat:

- Develop specification for replacement of existing radiant heat system.
- Obtain proposals for replacement of radiant heating system.
- Contract for installation of heating system.

Concrete and Bituminous Repairs:

- Inventory repair needs.
- Prioritize repairs.
- Obtain proposals.
- Contract repair work.

Measure of Performance Summary: Through the 2010 budget process, it was established that an amount of revenue generated from park fees would be allocated to the maintenance of infrastructure/Site and Grounds Improvements and the retention of customers. The above listed projects are consistent with the direction provided to the Parks Department.

Challenges

The County is allocating its financial resources between priority areas of land acquisition, trail development and sustainable park maintenance and rehabilitation projects.

The County has set aside \$4,000,000 for land acquisition costs. The funds are utilized as the local park agency cost share for acquisitions within existing park areas from willing sellers. The funds are also used to cash flow land acquisitions until regional funds are made available through the Metropolitan Council.

Additional, in 2009, the County adopted the FY 2010 Long Term Financial Plan. This new plan budgets \$50,000 annually for land acquisition cost by capturing a portion of the County's increasing tax base from new construction. These funds are intended to help pay a portion of the required local share (25%) for land acquisition of County Regional Park and Trail areas. This strategy was adopted in response to a change in funding by the Metropolitan Council for land acquisition. In 2008, the Metropolitan Council began requiring Implementing Regional Park Agencies contribute 25% of the cost to acquire land within the regional park areas. The Metropolitan Council would contribute 75% of the land acquisition costs.

Trail Development has been made possible with successful applications for Federal Transportation Enhancement Program Funds. The County is in the process of completing 15 miles of trails. Parks and Trails Funds generated from the constitutional amendment for Outdoor Heritage, Clean Water, Parks and Trails and the Arts are being used to supplement and provide the local match to Federal Transportation Enhancement Program Funds.

Park maintenance rehabilitation projects are receiving some funds from capturing a portion of park fees generated by users of the park system. These funds are being used to repair buildings and grounds and replace outdated rental equipment.

The County is challenged to secure funds which would develop the park areas it operates. Other funding sources such as capital improvement program (CIP) funds from the Metropolitan Council are being used to reimburse the County for past land acquisitions at Lake Waconia Regional Park. Regional CIP dollars to construct or renovate existing park areas is not anticipated until 2018 -2020. The availability of Parks and Trails Funds for park projects is not anticipated until 2016.

Projected scarce funds for capital improvements in parks means that development of Lake Waconia Regional Park and further development of Lake Minnewashta Regional Park are unlikely to occur in the next 5 years. The County Board may want to consider a development funding strategy which augments federal, state and regional funding sources and maintains user satisfaction with the park system.

**CARVER COUNTY PUBLIC WORKS
2012 / 2013 BUDGET COMPARISON
PROGRAM ADMINISTRATION / LYNDON ROBJENT**

09/07/12
8:39 AM

FUND / DEPT	DESCRIPTION	ACCOUNT	2013 BUDGET	2012 BUDGET	VARIANCE
PARKS - GENERAL					
01-520	PARKS - ADMINISTRATION	000	(\$359,490)	(\$361,690)	\$2,200
	ADMINISTRATION - REVENUE	000	\$975,330	\$914,820	\$60,510
	ADMINISTRATION - EXPENSES			\$553,130	\$62,710
	FUND 01 NET		\$615,840		

NOTES: LESS REVENUE ABOVE BASE
LESS CIP CAPITAL
LESS CIP PROFESSIONAL SERVICES

\$26,000	\$28,000	
(\$99,000)	(\$70,500)	
\$542,840	\$510,630	6.31%

01-520-0 Parks & Trails (Revolving Grants)
THIS ACCOUNT MOVED TO FUND 34

-247,000 -205,000

01-520 PARKS			
SALARIES & BENEFITS	\$586,402	\$571,507	\$14,895
SERVICES	\$177,413	\$155,113	\$22,300
SUPPLIES	\$108,815	\$114,000	(\$5,185)
CAPITAL	\$99,000	\$70,500	\$28,500
PROPERTY TAXES & OTHER	\$3,700	\$3,700	
PARK EXPENSE SUMMARY TOTAL	\$975,330	\$914,820	\$60,510

FUND / DEPT	DESCRIPTION	ACCOUNT NUMBER	2013 BUDGET	2012 BUDGET	VARIANCE
01-520	PARKS	REVENUE			
	METRO COUNCIL O & M GRANTS	520-000-0000-5285	(\$87,800)	(\$87,800)	
	PARK FEES	520-000-0000-5506	(\$252,000)	(\$256,000)	\$4,000
	MISC FEE - PROGRAMS & SPECIAL EVENTS	520-000-0000-5528	(\$3,690)	(\$3,690)	
	COMMODITY AND PROPERTY SALES	520-000-0000-5844	(\$9,000)	(\$7,000)	(\$2,000)
	MISCELLANEOUS RENTAL REVENUE	520-000-0000-5867	(\$6,500)	(\$7,200)	\$700
	DAMAGE DEPOSITS	520-000-0000-5869			
	REFUNDS & REIMBURSEMENTS	520-000-0000-5899	(\$500)		(\$500)
	TOTAL REVENUE		(\$359,490)	(\$361,690)	\$2,200

FUND / DEPT	DESCRIPTION	ACCOUNT NUMBER	2013 BUDGET	2012 BUDGET	VARIANCE
	EXPENDITURES				
	SALARIES & WAGES-PERMANENT	520-000-0000-6111	\$359,262	\$359,262	
	SALARIES & WAGES-PART TIME	520-000-0000-6112	\$85,000	\$63,427	\$21,573
	SALARIES & WAGES-OVERTIME	520-000-0000-6113	\$4,000	\$7,678	(\$3,678)
	CAFETERIA CONTRIBUTIONS	520-000-0000-6121	\$53,340	\$53,340	
	PER DIEM	520-000-0000-6125	\$2,500	\$2,500	
	OPER	520-000-0000-6150	\$4,845	\$4,845	
	COMPENSATED ABSENCES	520-000-0000-6151	\$1,960	\$1,960	
	HEALTH AND LIFE INSURANCE	520-000-0000-6152	\$8,072	\$8,072	
	MEDICARE	520-000-0000-6155	\$6,239	\$6,239	
	P.E.R.A.	520-000-0000-6162	\$26,392	\$29,392	(\$3,000)
	F.I.C.A.	520-000-0000-6172	\$26,683	\$26,683	
	WORKER'S COMPENSATION	520-000-0000-6173	\$6,962	\$6,962	
	LONG TERM DISABILITY INS	520-000-0000-6175	\$1,147	\$1,147	
	TELEPHONE AND TELEGRAPH	520-000-0000-6211			
	PUBLICATIONS & BROCHURES	520-000-0000-6232	\$1,400	\$1,400	
	PUBLICITY, SUBSCRIPTIONS, & DUES	520-000-0000-6240	\$2,500	\$2,500	
	ELECTRICITY	520-000-0000-6251	\$18,500	\$17,500	\$1,000
	REFUSE COLLECTION	520-000-0000-6252	\$5,000	\$4,500	\$500
	PROFESSIONAL & TECH. FEES	520-000-0000-6260	\$75,000	\$75,000	
	DATA PROCESSING SERVICES	520-000-0000-6263	\$2,300	\$2,300	
	DUST CONTROL	520-000-0000-6288	\$3,800	\$3,800	
	VEHICLE MAINTENANCE & REPAIR	520-000-0000-6312	\$500	\$500	
	BUILDING & STRUCTURE REPAIR	520-000-0000-6313	\$4,000	\$4,000	
	MACHINERY & EQUIPMENT REPAIR	520-000-0000-6314	\$6,000	\$6,000	
	EMPLOYEE MILEAGE ALLOWANCE	520-000-0000-6331	\$1,000	\$1,000	
	CONFERENCE & TRAINING	520-000-0000-6332	\$2,700	\$2,700	
	RENTALS	520-000-0000-6340	\$17,000	\$16,200	\$800
	INSURANCE PREMIUM	520-000-0000-6350	\$11,713	\$11,713	
	MISCELLANEOUS EXPENSES	520-000-0000-6379	\$3,000	\$3,000	
	RECREATION PROGRAMS & SPECIAL EVENTS	520-000-0000-6386	\$3,000	\$3,000	
	OFFICE SUPPLIES	520-000-0000-6401	\$4,650	\$4,650	
	GENERAL OPERATING SUPPLIES	520-000-0000-6420	\$1,700	\$1,700	
	CUSTODIAL SUPPLIES	520-000-0000-6422	\$5,900	\$5,900	
	LP GAS	520-000-0000-6425	\$17,000	\$17,000	
	GROUPS KEEPING SUPPLIES	520-000-0000-6426	\$16,000	\$16,000	
	BUILDING SUPPLIES	520-000-0000-6427	\$6,000	\$6,000	
	RECREATION SUPPLIES	520-000-0000-6452	\$11,000	\$11,000	
	REFERENCE BOOKS & LIBRARY MAT.	520-000-0000-6453	\$150	\$150	
	UNIFORMS & CLOTHING	520-000-0000-6457	\$2,865	\$2,200	\$665
	TOOLS & SHOP MATERIALS	520-000-0000-6464	\$2,150	\$2,400	(\$250)
	NON-CAPITALIZED EQUIPMENT	520-000-0000-6480	\$5,000	\$5,000	
	GASOLINE	520-000-0000-6561	\$8,000	\$11,200	(\$3,200)
	DIESEL	520-000-0000-6562	\$17,600	\$20,000	(\$2,400)
	MOTOR OIL & LUBRICANTS	520-000-0000-6563	\$800	\$800	
	MACHINERY PARTS	520-000-0000-6564	\$5,000	\$5,000	
	VEHICLE PARTS	520-000-0000-6566	\$5,000	\$5,000	
	SITE & GROUNDS IMPROVEMENTS	520-000-0000-6610	\$26,000	\$28,000	(\$2,000)
	BUILDING IMPROVEMENTS	520-000-0000-6640			
	EQUIPMENT & FURNITURE	520-000-0000-6660	\$73,000	\$15,500	\$57,500
	VEHICLE PURCHASE	520-000-0000-6670		\$27,000	(\$27,000)
	REFUNDS	520-000-0000-6810	\$700	\$700	
	PROPERTY TAXES	520-000-0000-6825	\$3,000	\$3,000	
	TOTAL EXPENSE		\$975,330	\$914,820	\$60,510

FUND / DEPT	DESCRIPTION	ACCOUNT NUMBER	2013 BUDGET	2012 BUDGET	VARIANCE
-------------	-------------	----------------	-------------	-------------	----------

CARVER COUNTY RAIL AUTHORITY

15-000	DAKOTA TRAIL				
	REVENUE	000	(\$124,600)	(\$120,000)	-4,600
	EXPENSES	000	\$124,600	\$120,000	4,600
	DAKOTA TRAIL - NET				

	PROPERTY TAXES - CURRENT	15-000-000-0000-5001	(\$122,500)	(\$120,000)	-2,500
	PROPERTY TAXES - DELINQUENT	15-000-000-0000-5004			
	FISCAL DISPARITIES	15-000-000-0000-5012			
	MOBILE HOME - CURRENT	15-000-000-0000-5017			
	MOBILE HOME - DELINQUENT	15-000-000-0000-5019			
	AG CONSERVATION CREDIT	15-000-000-0000-5207			
	PAYMENTS IN LIEU	15-000-000-0000-5270			
	OTHER INTERGOVERNMENTAL REVENUE	15-000-000-0000-5391			
	LEASE REVENUE	15-000-000-0000-5815	(\$2,100)		
	TRANSFERS FROM OTHER FUNDS	15-000-000-0000-5880			
	TOTAL REVENUE		(\$124,600)	(\$120,000)	-4,600

	SALARIES	15-000-000-0000-6111	\$36,000		36,000
	PROFESSIONAL FEES	15-000-000-0000-6280	\$76,500		76,500
	RENTALS	15-000-000-0000-6340			
	INSURANCE PREMIUM	15-000-000-0000-6350			
	OTHER MISCELLANEOUS EXPENSES	15-000-000-0000-6379	\$7,100		7,100
	GROUND KEEPING SUPPLIES	15-000-000-0000-6426	\$5,000		5,000
	TOOLS & SHOP MATERIALS	15-000-000-0000-6464			
	LAND	15-000-000-0000-6601		\$120,000	-120,000
	SITE AND GROUNDS IMPROVEMENT	15-000-000-0000-6610			
	EQUIPMENT AND FURNITURE PURCHASE	15-000-000-0000-6680			
	TRANSFERS	15-000-000-0000-6932			
	TOTAL EXPENSES		\$124,600	\$120,000	4,600

PARK & TRAILS CIP / MET COUNCIL GRANTS

34	GENERAL				
000	PROPERTY TAXES - CURRENT	000-000-0000-5001	(\$50,000)	(\$50,000)	
	MOBILE HOME - CURRENT	000-000-0000-5017			
	MARKET VALUE CREDIT	000-000-0000-5213			
	CPA	000-000-0000-5221	(\$68,750)		-68,750
	LOCAL FUNDING	000-000-0000-5280		(\$1,345,000)	1,345,000
	PARK & TRAILS REVOLVING GRANTS	000-000-0000-5286	(\$266,000)	(\$266,000)	
	TRANSFERS FROM OTHER FUNDS	000-000-0000-5880		(\$915,000)	915,000
	PROFESSIONAL SERVICES	000-000-0000-6280			
	CONSTRUCTION	000-000-0000-6281	\$334,750	\$266,000	68,750
	LAND	000-000-0000-6601	\$50,000		50,000
	TOTAL SERVICE 0000		(\$2,310,000)	(\$2,310,000)	2,310,000

Attachment C: Capital Projects by Fund for 2013

DEPT.	CIP #	DESCRIPTION	2012	2013	2013	Inc./Dec
			Adopted	Requested	Recommended	
Parks & Trails Capital Improvements						
		Local Contribution for Advanced Funded Park Land Acquisitions (Levy)	50,000	50,000	50,000	-
		TBD Park & Trail Projects (25% of CPA not allocated to operating budget)	-	68,750	68,750	(68,750)
526-001		Dakota Trail Phase II (CCRRA Transfer)	170,000	-	-	170,000
		Dakota Trail Phase II Construction (Federal Grant)	1,000,000	-	-	1,000,000
		Dakota Trail Phase II Trail Head (TBD)	50,000	-	-	50,000
		Dakota Rail Regional Trail Connection to CSAH 10 (Local grant)	192,000	-	-	192,000
		Southwest Regional Trail (Chaska / Victoria trail) Park & Trails Fund		141,360	141,360	(141,360)
		Southwest Regional Trail (Chaska / Victoria trail) Federal		436,640	436,640	(436,640)
		Southwest Regional Trail (Chaska / Victoria trail) Municipal Participation		48,000	48,000	(48,000)
		34-520-XXX-XXXX-6610	1,462,000	744,750	744,750	717,250
Fund #34 Total	34-XXX-XXX-XXXX-66XX		1,462,000	744,750	744,750	717,250
Levy Dollars - Fund #34			50,000	50,000	50,000	-

Building and Other Capital Improvements (Pay As You Go With State CPA)

		Mayer library lockers (2011 State CPA)	30,000	-	-	(30,000)
974-01		Watertown Library remodel (2011 State CPA)	50,000	-	-	(50,000)
		Data and Phone Cabling Needs - County Facilities (2011 State CPA)	100,000	-	-	(100,000)
		Building Security Projects (Levy)	-	100,000	100,000	100,000
		TBD Building Projects (25% of CPA not allocated to operating budget)	-	68,750	68,750	68,750
		30-XXX-XXX-XXXX-6630	180,000	168,750	168,750	(11,250)
Fund #30 Total	30-XXX-XXX-XXXX-66XX		180,000	168,750	168,750	(11,250)
Levy Dollars - Fund #30			-	100,000	100,000	-

Regional Rail Authority Right-of Way Capital Improvements

		U P Line Response Action Plan and Stewardship (Levy)	45,000	-	-	(45,000)
		Transfer to Park & Trail for Dakota Rail Line (Levy)	70,000	-	-	(70,000)
		Transfer to Park & Trail for Dakota Rail Line (Reserves)	100,000	-	-	(100,000)
		Dakota Rail Line Stewardship (Levy)	5,000	-	-	(5,000)
		TBD Regional Rail Authority Projects (Levy) (Reduce for 2013 by PT FTE)	-	74,000	74,000	74,000
		15-XXX-XXX-XXXX-6630	220,000	74,000	74,000	(146,000)
Fund #30 Total	30-XXX-XXX-XXXX-66XX		220,000	74,000	74,000	(146,000)
Levy Dollars - Fund #15			120,000	74,000	120,000	-

Carver County Regional Rail Authority

Description

The Carver County Regional Rail Authority (CCRRA) is governed by five Commissioners appointed by the Carver County Board of Commissioners. In Carver County the CCRRA Commissioners are the County Board Commissioners. The Public Works Division manages projects and work activities for the CCRRA. The purpose of the CCRRA is to provide for the preservation and improvement of local rail service for agriculture, industry, or passenger traffic and provide for the preservation of abandoned rail right-of-way for future transportation uses, when determined to be practicable and necessary for the public welfare, particularly in the case of abandonment of local rail lines. The CCRRA levies separately from Carver County to fund regional rail projects and activities. **The proposed 2013 levy is \$120,000, the same as 2012.** Several other funding sources are used to augment the CCRRA levy for property acquisition, corridor preservation, management and development. The following table summarizes the CCRRA Fund.

Revenues		2011 Actual	2012 Budget	2013 Requested Budget	Dollar Inc/Dec 2012-13	Percent Inc/Dec 2012-13
Account #/Category						
5000	Taxes & Penalties	114,310	120,000	120,000	-	0.00%
5100	Licenses & Permits	-	-	-	-	0.00%
5200-5400	Intergovernmental	184	-	-	-	0.00%
5500	Charges for Services	-	-	-	-	0.00%
5600	Fines & Forfeitures	-	-	-	-	0.00%
5700	Investment Earnings	-	-	-	-	0.00%
5750	Gifts & Contributions	-	-	-	-	0.00%
5800-5900	Other Revenues	1,689,085	-	2,100	2,100	0.00%
TOTAL REVENUES		1,803,579	120,000	122,100	2,100	1.75%
Expenditures						
6000	Public Assistance	-	-	-	-	0.00%
6100	Personal Services	-	-	-	-	0.00%
6200-6300	Services & Charges	28,767	50,000	81,100	33,600	62.20%
6400-6500	Material & Supplies	84	-	5,000	5,000	0.00%
6600	Capital Outlay	2,124,345	-	-	-	0.00%
6700	Debt Services	-	-	-	-	0.00%
6800	Other Expenses	711	-	-	-	0.00%
6900	Transfers	144,704	170,000	36,000	(134,000)	-78.82%
TOTAL EXPENDITURES		2,298,611	220,000	122,100	(95,400)	-44.50%
CAPITAL RESERVES USED		495,032	100,000	-	(100,000)	-100.00%

DIFFERENCES BETWEEN REVENUES & EXPENDITURES	-	-	-	-	0%
--	---	---	---	---	-----------

CCRRA is currently involved with two rail corridors, the Dakota Rail Line and the Union Pacific Rail Line, both of which have been rail banked and approved for interim trail use. Activities and projects on these corridors are described below.

Dakota Rail Line

The CCRRA partnered with the Hennepin County and McLeod County Regional Railroad Authorities and the Minnesota Department of Transportation (MnDOT) in 2000 to acquire the abandoned Dakota Rail Line. The goal of the acquisition was to preserve the corridor for future transportation and provide an interim trail use along the abandoned line which serves several purposes including providing a non-motorized transportation corridor, a recreational corridor and an effective method to preserve and manage the corridor for future rail transportation. A portion of this line extends 12 miles across the northern part of Carver County from the west to east county line. Survey work has been done to identify what is railroad property, and signage has been installed to identify the railroad boundary.

The County Parks Department completed a Regional Trail Master Plan for developing the Dakota Regional Trail in 2006. This master plan supports a number of non-motorized uses along the rail corridor while preserving it for future transportation.

Phase I Dakota Rail Regional Trail

Federal Transportation Enhancement funding was awarded to Carver County through the 2007 Regional Solicitation process to construct a pedestrian trail from the east County line to the city of Mayer. In 2009 the project received additional federal funds through the American Recovery Reinvestment Act (ARRA). This new trail segment completed in 2011 is the first regional trail operated by Carver County. Additional funding for the construction of the trail on Carver County Regional Railroad Authority property was provided by the CCRRA levy and funds from the Legacy Amendment, Parks and Trails Fund (sales tax).

Phase II Dakota Rail Regional Trail

This segment of trail connects to Phase I of the trail in Mayer and continues west to the county line past the City of New Germany a distance of approximately 5 miles. The trail is a 10-foot wide bituminous trail consistent with the previously constructed Phase I segment of the trail. Construction for this segment of trail was completed in 2012. In the 2009 Regional Solicitation, Carver County was awarded \$1 million in federal Transportation Enhancement funds to construct the trail. Additional funding for the trail was provided by the CCRRA levy and funds from the Legacy Amendment, Parks and Trails Fund (sales tax). This project completes the Dakota Rail Regional Trail and provides an effective way to preserve the corridor for future rail.

Dakota Rail Corridor Management and Stewardship

During 2010 and 2011, buildings were removed from Dakota Rail corridor in New Germany. These building included a feed mill, storage building and an old garage building located in the depot area of New Germany. The buildings were in a dilapidated state and no longer served a productive function.

With completion of the trail construction comes long term maintenance and stewardship. A long term maintenance plan (e.g. seal coating, crack filling, pavement repair etc) will be developed in 2013 which will be used for future budget planning. **The day to day stewardship (e.g. weed control, tree trimming, cleanup, grooming, sweeping, drainage corrections etc) of the corridor is proposed to be accomplished with the addition of a new Parks/Highway Maintenance Worker position for 2013.** The position is proposed to be funded 50% out of the CCRRA levy and 50% out of the Public Works Road and Bridge fund. The 50% from CCRRA will be transferred to the Road and Bridge operating budget. This position will perform tail maintenance in the summer and plow snow on the county highways in the winter.

Union Pacific Rail Line

Corridor Acquisition

Beginning in 2008, the Carver County Regional Rail Authority in conjunction with the Scott County Regional Railroad Authority have worked to acquire the Union Pacific Railroad Chaska Industrial Lead, a 5 mile rail line that extends from the United Sugars business in Chaska to the City of Carver and across the Minnesota River near Merriam Junction. The acquisition was completed in 2011. Stated purposes for acquiring the railroad corridor included preservation of the corridor for future transportation, utilities, road right-of-way, as well as interim trail use. Acquisition of the railroad corridor was funded from Metropolitan Council Acquisition Opportunity Fund, Metropolitan Council Environmental Services fund, as well as the Carver and Scott County Regional Railroad Authorities.

Extension of the Minnesota River Bluffs Regional Trail

In 2011, Carver County submitted an application for federal Transportation Enhancement funding to construct an extension of the Minnesota River Bluffs Regional Trail along the Union Pacific Rail corridor from Chaska Athletic Park to the City of Carver. The project was awarded \$551,200 in federal funding for construction in 2015. The local match for the project will come from the CCRRA levy and the Legacy Parks and Trail Fund. Engineering work will begin in 2013.

The 2013 CCRRA projects and activities are summarized below.

2013 Major Planned Projects/Activities

- Minnesota River Bluffs Trail (UP Rail Line) Project Memorandum and Design – \$74,000.
- Hire new Parks/Highway Maintenance Worker for railroad corridor stewardship and trail maintenance (50% CCRRA levy) - \$36,000. Transfer funds to Road and Bridge operating fund.

Goals and Objectives

Goal #1: Complete Project Memorandum and Design for Mn River Bluffs Trail

Supports County Goal #1 Communities: Create and maintain safe, healthy and livable communities

Objective: Address any environmental considerations and then proceed with preliminary engineering design.

Goal #2: Provide ongoing stewardship activities to maintain railroad infrastructure and land.

Supports County Goal #1 Communities: Create and Maintain safe, healthy and livable communities

Objective: Maintain investment in infrastructure and address land stewardship issues such as weeds, diseased trees, and drainage issues, cleanup, sweeping, blowing etc.