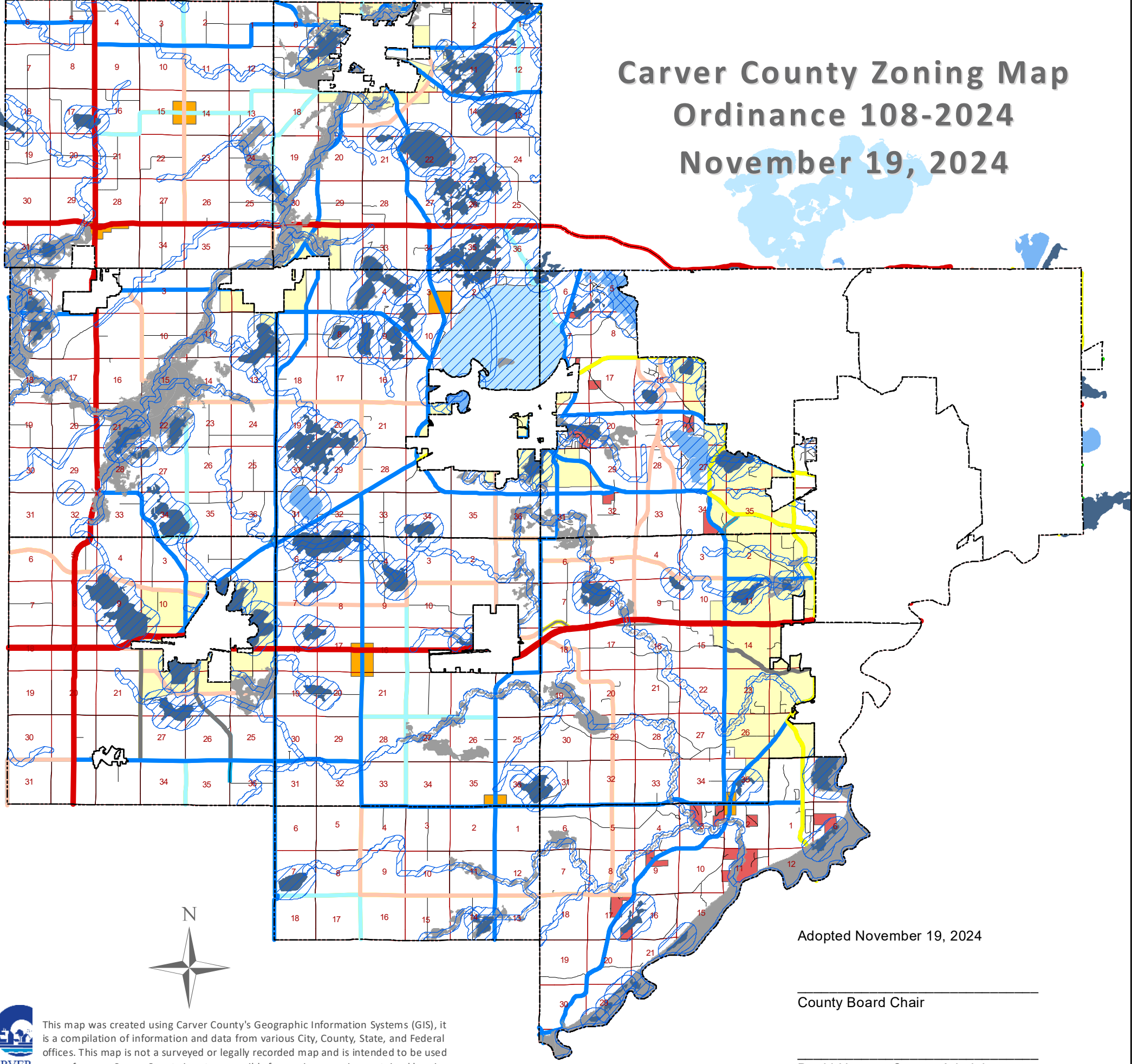


Carver County Zoning Map Ordinance 108-2024 November 19, 2024



"A" Agricultural District

The County has and may in the future enter into or be affected by a variety of official controls, orderly annexation agreements, joint powers agreements, or other similar agreements that affect the actual extent of this district. Such controls or agreements shall supercede the boundaries shown on this map.

Transition Area Overlay District

The extent of the District as shown on this map is illustrative of Transition Areas as shown on the map in the Comprehensive Plan on the date of the adoption of this ordinance. The actual extent of the District shall be governed by the Transition Policy Area as shown in the Comprehensive Plan. A change in the Plan map shall constitute a change in the District boundaries.

Rural Service Overlay District

Residential Cluster District

These lands were rezoned to this District under a previous ordinance. No new zones of this type are permitted. The actual boundaries of the zone are defined in Appendix A of the Zoning Ordinance.

Shoreland Overlay District

The map illustrates the general extent of the Shoreland Overlay District and the classification of the lakes. Actual determination of the Shoreland Zone is made by measurement on air photos or on the ground on a site by site basis.

Floodplain Overlay District

The map illustrates the approximate extent of the Floodplain Overlay District. Actual determination of the Floodplain Zone boundaries is made according to the rules for interpretation specified by the County Code.

LAKE SHORELAND CLASSIFICATIONS

- General Development
- Recreational Development
- Natural Environment

BOUNDARY LINES

- City/Township Boundaries
- Sections

FUTURE ROAD CLASSIFICATIONS

- Principal Arterial
- A Minor Reliever
- A Minor Expander
- A Minor Connector
- Other Arterial
- Major Collector
- Minor Collector
- Local Road



Adopted November 19, 2024

County Board Chair

David Hemze, County Administrator

This map was created using Carver County's Geographic Information Systems (GIS), it is a compilation of information and data from various City, County, State, and Federal offices. This map is not a surveyed or legally recorded map and is intended to be used as a reference. Carver County is not responsible for any inaccuracies contained herein.