A photograph showing two individuals in waders and caps working in a fenced-off area of a lake. They are surrounded by aquatic vegetation, likely reeds or grasses, which they appear to be transplanting. The water is greenish-brown, and the background shows a dense line of trees under a clear sky. The text is overlaid on the center of the image.

Benton Lake Aquatic Vegetation Transplant

Carver County Water Management Organization

Benton Lake Conservancy

9/24/2024



Presentation Overview

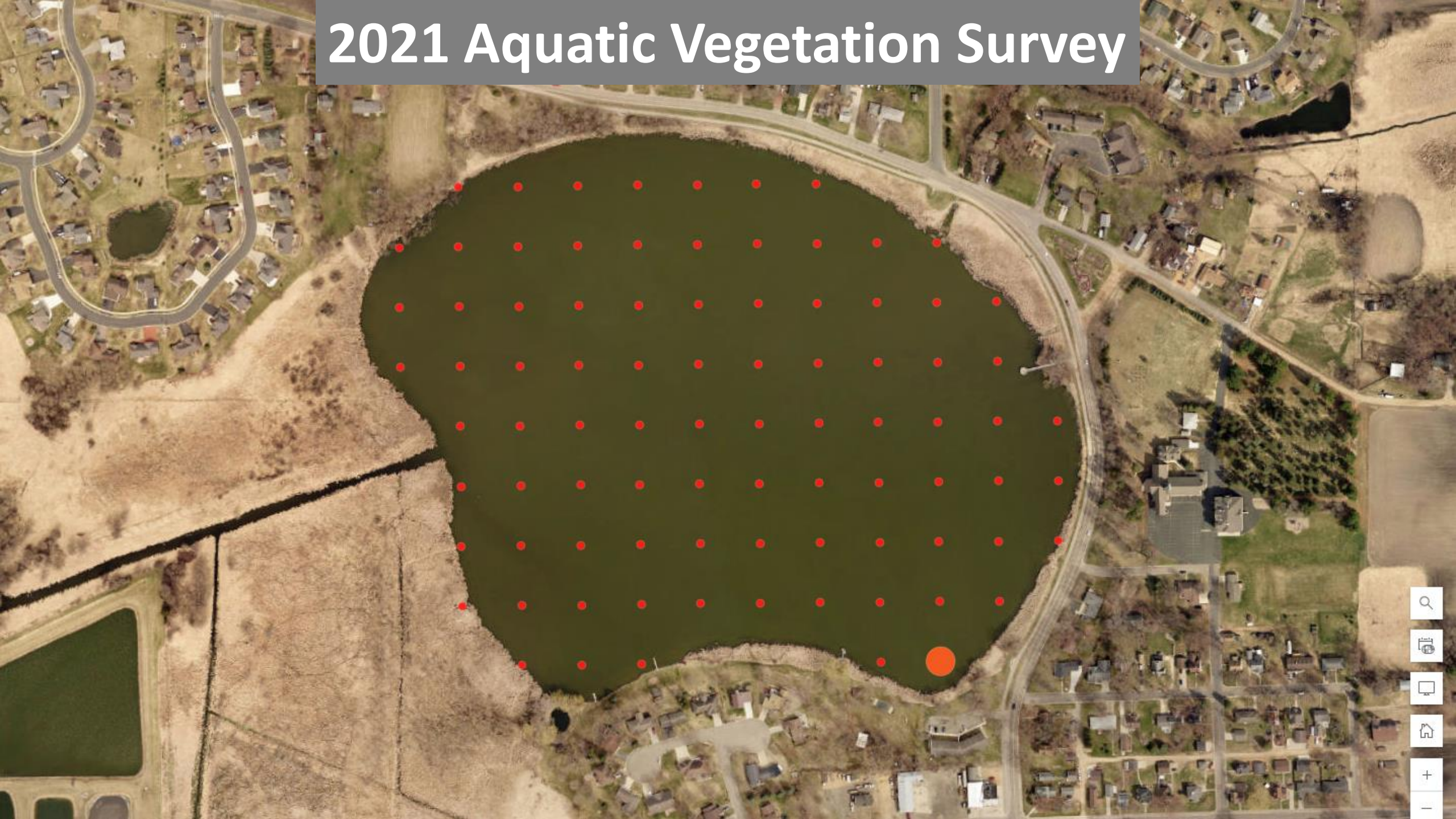
- Informational item only
- No committee action is required

BENTON LAKE LACKS VEGETATION!!!!

- Due to:
 - Poor water quality
 - Low transparency
 - Large populations of rough fish
 - Common Carp and black bullhead



2021 Aquatic Vegetation Survey



Transplant Process

- Obtain permit from the state
 - Select plant species to transplant
 - Coontail
 - Sago pondweed-found in Benton historically
 - Northern watermilfoil
 - Chara sp.
 - Leafy pondweed
 - Select donor lake
 - Young America Lake
 - Meuwissen Lake



2024 Pre-Transplant Aquatic Vegetation Survey

26% of sites sampled had sago pondweed



Transplant Process

- Install exclusion pens
 - Partnered with the Benton Lake Conservancy to purchase materials



Benton Lake

Benton Lake

Benton St E

284

Pearl Ave

284

Church St E

Study Design

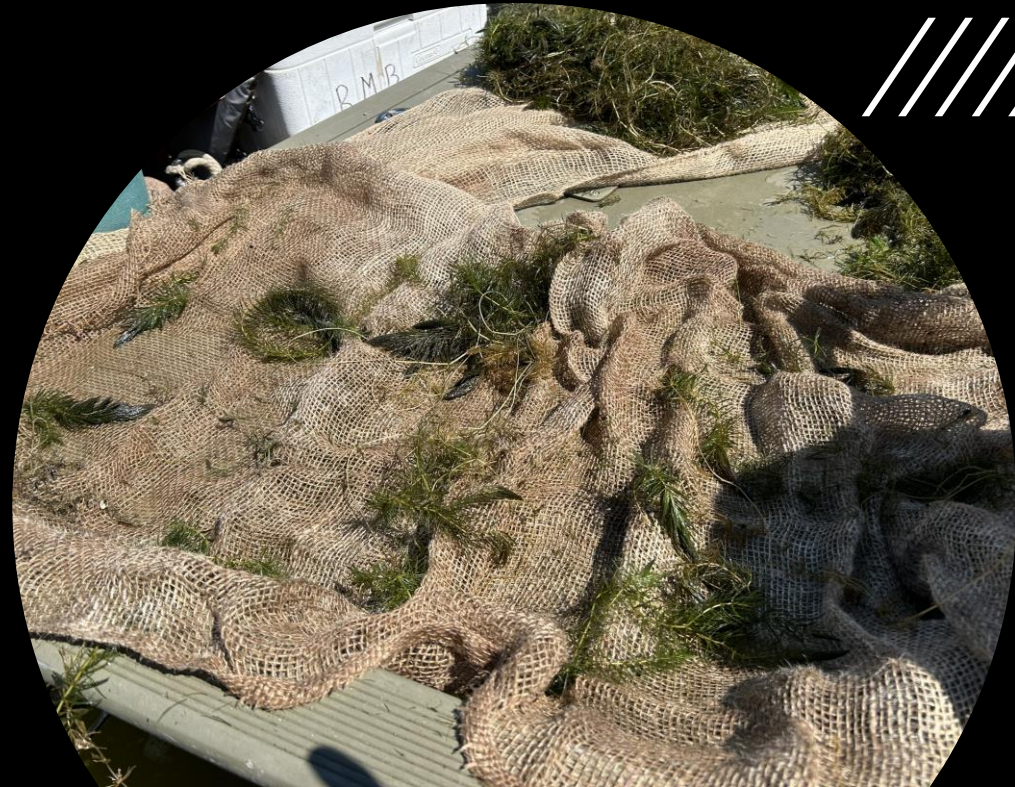
Transplant Process

- Obtain plants from donor lake
 - 8/12/2024
 - Young America Lake-4 coolers
 - Coontail, chara, sago pondweed, northern watermilfoil
 - Meuwissen Lake-2 coolers
 - Leafy pondweed, coontail, sago pondweed
 - 9/9/2024
 - Young America Lake-4 coolers
 - Coontail



Transplant Process

- Installation
 - Two Methods
 - Threaded plants through burlap
 - Cooler dump



8/12: Installed threaded burlap

8/12: Cooler dump

8/12: Cooler dump

8/12: Installed threaded burlap



9/9: No action taken

9/9: Installed threaded burlap

9/9: Installed threaded burlap

9/9: No action taken

Benton Lake

Benton Lake

Benton St E

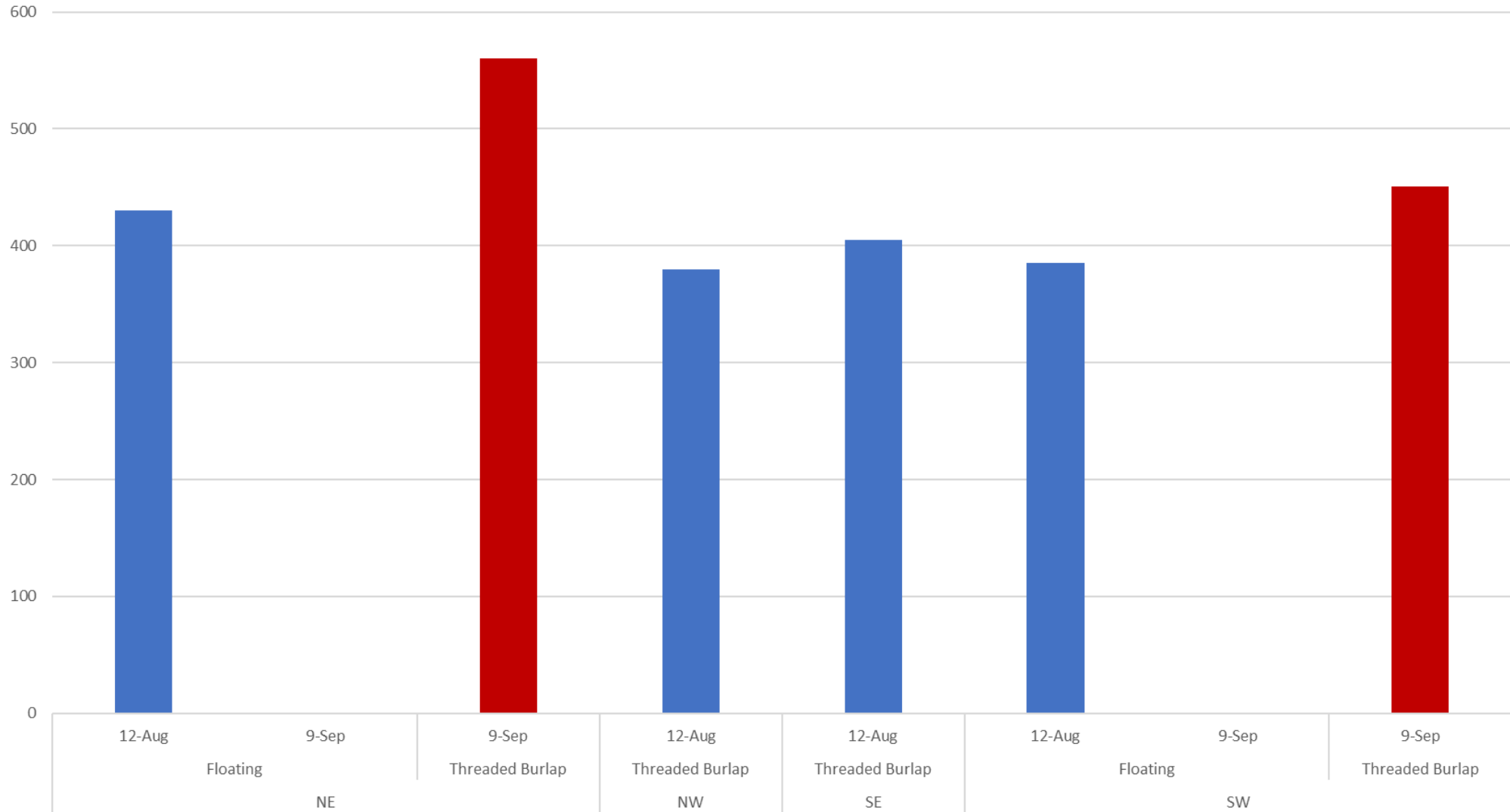
284

Paul Ave

284

Church St E

Number of Plants Installed



Transplant Process

- Monitoring
 - Visual Observations
 - Photos
 - Rake tosses in pens without burlap
 - Lead us to second transplant in SW and NE pens



Questions



Stem Counts Per Plot

