

HIGHWAY 11 PROJECT - CARVER PARK RESERVE



CARVER
COUNTY

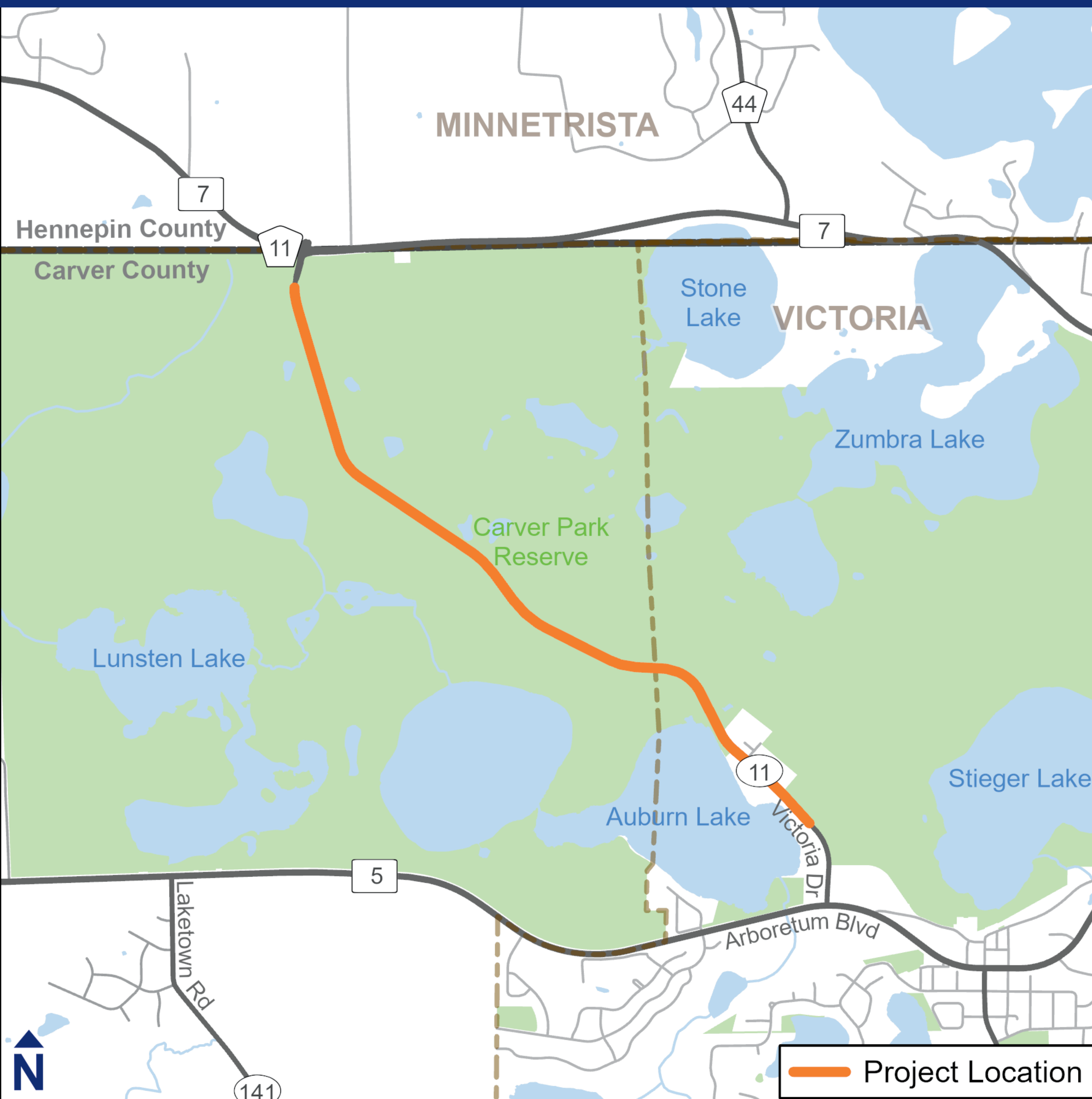
Carver County, in collaboration with the City of Victoria and Three Rivers Park District, is designing corridor improvements for Victoria Drive/Highway 11 between Highway 7 and Highway 5. Highway 11 is a key connection for commuters, local residents, and Carver Park Reserve users.

SAFETY IMPROVEMENTS

- ✓ Widen shoulders to eight feet.
- ✓ Correct two curves to meet 55 mph design standards.
- ✓ Build new turn lanes at Grimm Road, Nature Center Drive, and Carver Park Road.

PROJECT GOALS

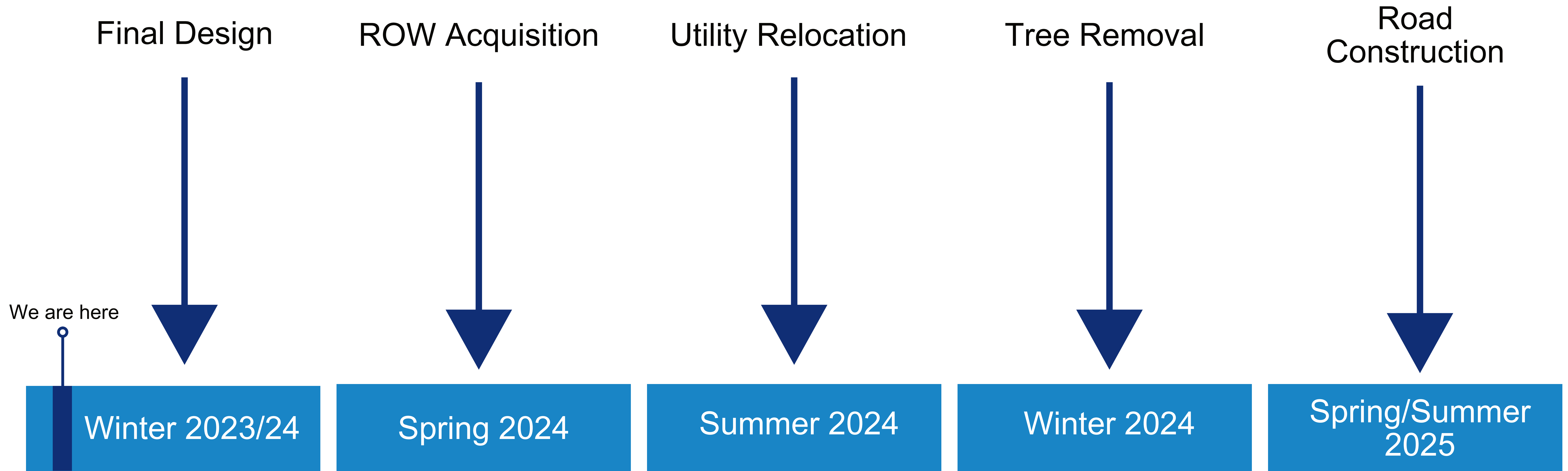
- ✓ Build new mixed use trail to connect Carver Park Reserve Trails to downtown Victoria.
- ✓ Rebuild pavement to improve ride quality.



PROJECT BENEFITS

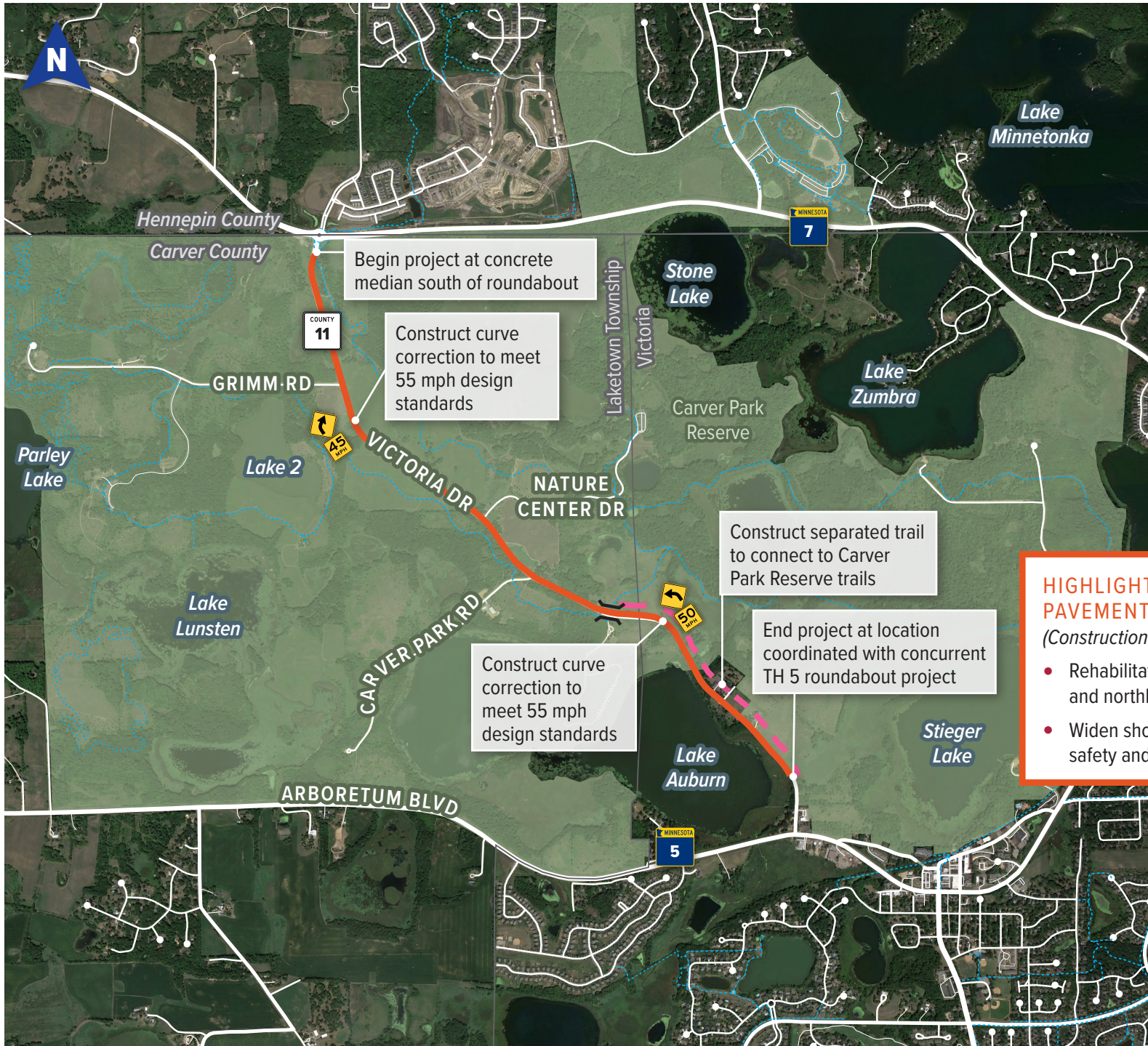
- ✓ Enhanced corridor traffic safety with wider shoulders, improved curve geometry, and additional turn lanes.
- ✓ Better access to Carver Park Reserve.
- ✓ More walking and bike options with mixed use trail construction.
- ✓ Improved ride quality.

PROJECT TIMELINE



CARVER
COUNTY

Highway 11 Project – Carver Park Reserve



Begin project at concrete median south of roundabout

Construct curve correction to meet 55 mph design standards

Construct separated trail to connect to Carver Park Reserve trails

Construct curve correction to meet 55 mph design standards

End project at location coordinated with concurrent TH 5 roundabout project

LEGEND

- Project Area
- - - Existing Trail Network
- Three Rivers Park District Property
- Trail Underpass
- - - Proposed Separated Shared Use Trail

HIGHLIGHTS OF HIGHWAY 11 PAVEMENT WORK
(Construction currently planned for 2025)

- Rehabilitate pavement on southbound and northbound through lanes.
- Widen shoulders to 8 feet for improved safety and non-motorized corridor use.