

Joint County Ditch Meetings

February 22, 2022 – 8:00 a.m.

County Board Room

*Joint Ditch 1 Meeting – Carver County Commissioners Fahey, Lynch, Degler,
McLeod County Commissioners Schmalz and Krueger*

*Joint Ditch 4 Meeting – Carver County Commissioners Fahey, Lynch, Workman,
McLeod County Commissioner Schmalz and Wright County Commissioner Kaczmarek*

*Joint Ditch 5 Meeting – Carver County Commissioners Fahey, Lynch, Udermann,
McLeod County Commissioners Schmalz and Krueger*



Carver County Board of Commissioners

February 22, 2022

County Board Room

Work Session

The County Board Room is open to the public. However, Board Room audience capacity is limited to twelve (12) due to COVID-19 concerns.

- 9:00 a.m. **A. GROWTH: Manage the challenges and opportunities resulting from growth and development**
 - 1. 2022 Federal Transportation Grant Opportunities..... 1-3

David Hemze
County Administrator

UPCOMING MEETINGS

March 1, 2022	9:00 a.m. Board Meeting
March 8, 2022	No Meeting
March 8, 2022	7:00 p.m. Annual Township Meetings
March 15, 2022	9:00 a.m. Board Meeting
March 22, 2022	9:00 am. Board Work Session
April 5, 2022	No Meeting
April 12, 2022	9:00 a.m. Board Meeting

Carver County Board of Commissioners Request for Board Action



Agenda Item:
2022 Federal Transportation Grant Opportunities

Primary Originating Division/Dept: <input type="text" value="Public Works - Program Delivery"/>	Meeting Date: <input type="text" value="2/22/2022"/>
Contact: <input type="text" value="Angie Stenson"/> Title: <input type="text" value="Sr. Transportation Planner"/>	Item Type: <input type="text" value="Work Session"/>
Amount of Time Requested: <input type="text" value="45"/> minutes Presenter: <input type="text" value="Lyndon Robjent"/> Title: <input type="text" value="Public Works Director"/>	Attachments: <input checked="" type="radio"/> Yes <input type="radio"/> No
Strategic Initiative: <input type="text" value="Growth: Manage the challenges and opportunities resulting from growth and development"/>	

BACKGROUND/JUSTIFICATION:

This item is for discussion of upcoming federal transportation grant opportunities and potential funding applications for these programs. The programs include the Metropolitan Council's Regional Solicitation, MnDOT's Highway Safety Improvement Program, and USDOT's Rebuilding American Infrastructure with Sustainability and Equity "RAISE" Program. Staff will give an overview of the project screening process for these funding opportunities and present initial project lists for grant applications. Resolutions of support will be requested in March.

ACTION REQUESTED:

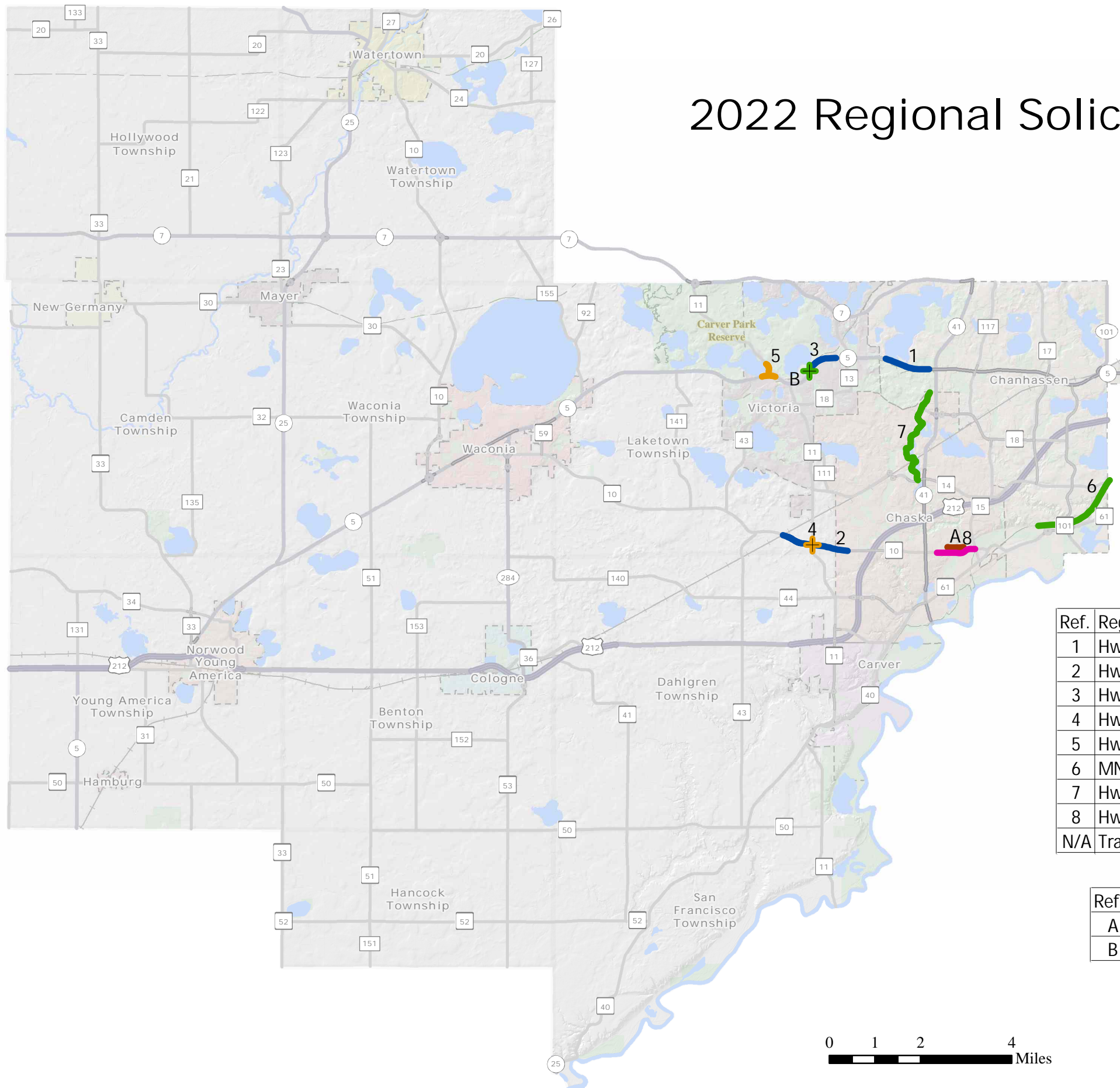
Discussion on upcoming transportation grant programs and direction on project applications for federal transportation funding.

FISCAL IMPACT: <input type="text" value="None"/>	FUNDING
If "Other", specify: <input type="text"/>	County Dollars = <input type="text"/>
FTE IMPACT: <input type="text" value="None"/>	Total <input type="text" value="\$0.00"/>
<input checked="" type="checkbox"/> Insert additional funding source	
Related Financial/FTE Comments:	

Office use only:

RBA 2022 - 8202

2022 Regional Solicitation Applications



- Strategic Capacity
- Spot Mobility
- Multiuse Trails and Pedestrian
- Safe Routes to School
- Reconstruction

Ref.	Regional Solicitation Applications	Category
1	Hwy 5 from Minnewashta Pkwy to Hwy 41	Strategic Capacity
2	Hwy 10 from west of Hwy 11 to W Creek Ln	Strategic Capacity
3	Hwy 5 from Stieger Lake Ln to east of Park Dr/Kochia Ln	Strategic Capacity
4	Hwy 11/Hwy 10 Intersection	Spot Mobility
5	Hwy 5/Hwy 11 N Intersection	Spot Mobility
6	MN River Bluffs Regional Trail	Multiuse Trails
7	Hwy 41 Ravine Trail	Multiuse Trails
8	Hwy 10 (Engler Blvd) from Park Ridge Dr to Hwy 15 (Audubon Rd)	Reconstruction
N/A	Traffic Signal Technologies & ITS Corridor Enhancements	Traffic Mgmt. Tech

Ref.	City-led Applications	Category
A	Hwy 10 (Engler Blvd) Trail from Ridge Ln to Ravoux Rd	Safe Routes to School
B	Hwy 5 Pedestrian Overpass at 78th St	Pedestrian

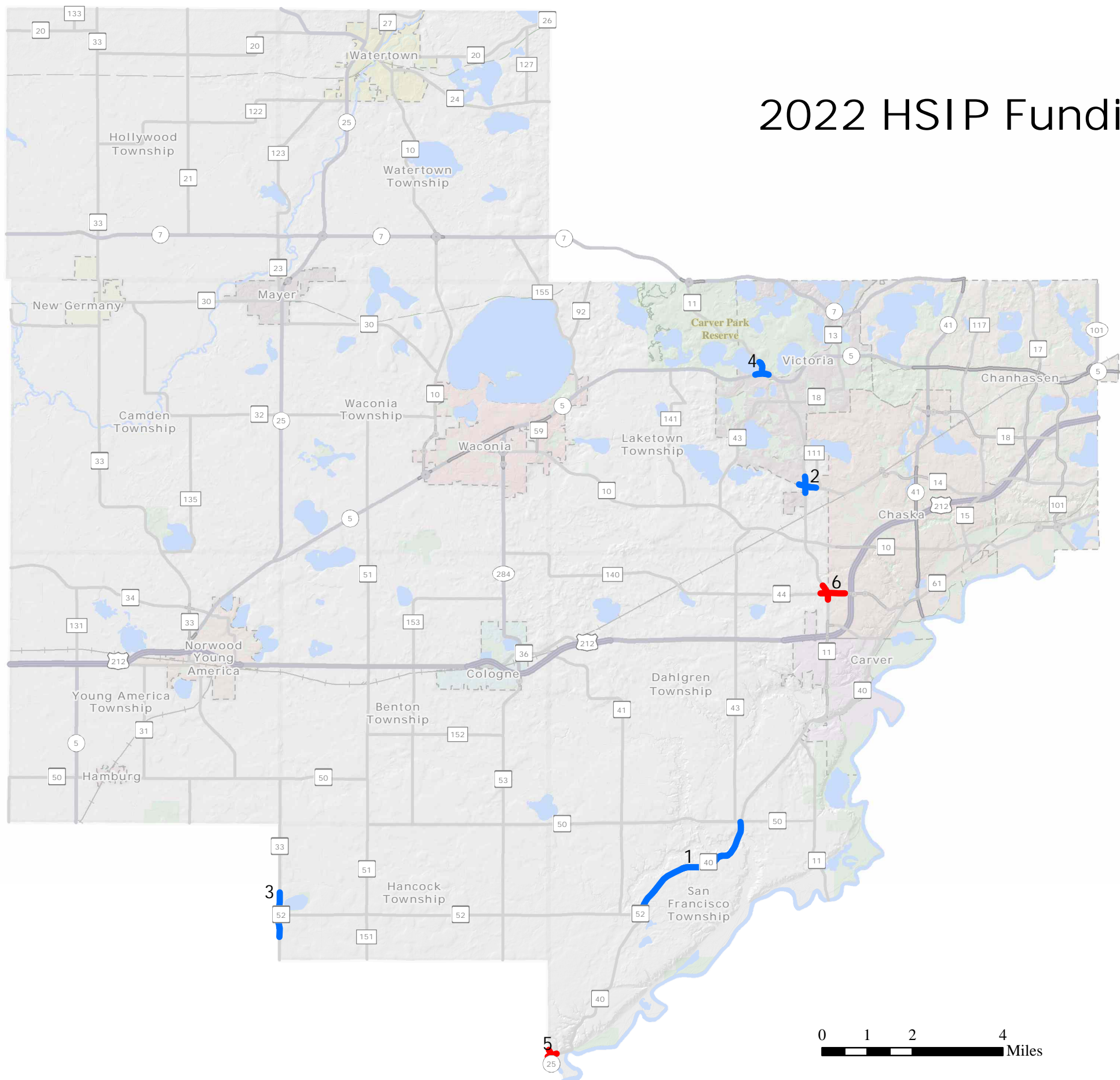


This map was created using a compilation of information and data from various City, County, State, and Federal offices. It is not a surveyed or legally recorded map and is intended to be used as a reference. Carver County is not responsible for any inaccuracies contained herein.



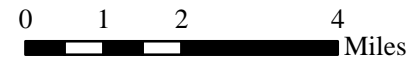
Public Works Division
 11360 Hwy 212, Suite 1
 Cologne, MN 55322
 (952) 466-5200
 Created: 2/14/2022

2022 HSIP Funding Applications




— Proactive
— Reactive

Ref.	HSIP Applications	Category
1	Hwy 40 from Hwy 50 to Hwy 52	Proactive
2	Hwy 11/Hwy 14/Marsh Lake Rd Intersection Roundabout	Proactive
3	Hwy 33/Hwy 52 Intersection Realignment	Proactive
4	Hwy 5/Hwy 11 Intersection Roundabout	Proactive
N/A	Countywide Pavement Markings	Proactive
N/A	Countywide Intersection Lighting	Proactive
5	Hwy 25/Hwy 40 Intersection Improvements	Reactive
6	Hwy 11/Hwy 44 Intersection Roundabout	Reactive



This map was created using a compilation of information and data from various City, County, State, and Federal offices. It is not a surveyed or legally recorded map and is intended to be used as a reference. Carver County is not responsible for any inaccuracies contained herein.



Public Works Division
 11360 Hwy 212, Suite 1
 Cologne, MN 55322
 (952) 466-5200
 Created: 2/10/2022