



**Carver
County
Parks**

11360 Highway 212 West, Suite 2
Cologne, MN55322

**Park & Recreation Commission (Virtual) Meeting
6:30 p.m.
Wednesday, January 12, 2022**

Microsoft Teams Virtual Meeting Access Options:

Join on your computer or mobile app

[Click here to join the meeting](#)

Join with a video conferencing device

carvercounty@m.webex.com

Video Conference ID: 111 118 297 4

[Alternate VTC instructions](#)

Or call in (audio only)

[+1 952-955-9449,,576921030#](#) United States, Bloomington

Phone Conference ID: 576 921 030#

Agenda

- 1) Call to Order (6:30 p.m.)
- 2) Roll Call (6:30 p.m.)
- 3) Introduction of new Commission Member Makiza Johnson (6:31 pm)
- 4) Approval of Agenda (6:36 p.m.)
- 5) Approval of the December 8, 2021 Regular Meeting Minutes (6:37 p.m.)
- 6) Commissioner Liaison Report (6:38 p.m.)
- 7) Open to the Public (6:40 p.m.)
- 8) Discussion (6:45 p.m.)
 - a. Waterfront Service Center Update
- 9) New Commission Member Orientation (7:15 p.m.)
- 10) Staff Reports (7:45 p.m.)
 - a. Coney Island Vault Latrines
 - b. TH 5 Regional Trail
 - c. Park General Operations & Recreation Services
 - d. Maintenance and Operations
- 11) Commission Member Reports (7:55 p.m.)
- 12) Set Next Meeting Date (8:00 p.m.)
 - a. February 9, 2022
- 13) Adjourn (8:00 p.m.)

Please note if a Commission Member cannot attend the meeting, please call the Park Office at 952-466-5250.

CARVER COUNTY



**Park & Recreation Commission (Virtual) Meeting
6:30pm
Wednesday, December 8, 2021**

Meeting Minutes

- 1) Call Meeting to Order, Roll Call (6:30 p.m.)
 - a. G. Bruner called the meeting to order at 6:30 pm
 - i. Members Present: Jim Boettcher, Curt Kobilarcsik, Mark Lagergren, Scott Welvaert, Gerald Bruner, and Gary Van Eyll (7:07 pm)
 - ii. Members Absent: Scott Knight
 - iii. Staff Present: Martin Walsh, Sam Pertz, Commissioner Tim Lynch, Jacob Sandvig
- 2) Introduction of Hope Mack, Park Administrative Assistant (6:34 pm)
- 3) Approval of the November 10, 2021 Regular Meeting Minutes (6:35 p.m.)
 - a. Motion to approve the minutes made by J.Boettcher, Seconded by S. Welvaert
 - b. Roll Call Vote: J. Boettcher – Aye, C. Kobilarcsik – Aye, M. Lagergren – Aye, S. Welvaert – Aye, G. Bruner – Aye; Passed 5-0
- 4) Additions or Deletions to the Agenda (6:36 p.m.)
 - a. No additions or deletions were made to the agenda.
- 5) Approval of Agenda (6:36 p.m.)
 - a. Motion to approve the agenda made by C. Kobilarcsik, Seconded by M. Lagergren
 - b. Roll Call Vote: J. Boettcher – Aye, C. Kobilarcsik – Aye, M. Lagergren – Aye, S. Welvaert – Aye, G. Bruner – Aye; Passed 5-0
- 6) Commissioner Liaison Report (6:37 p.m.)
 - a. The purchase of the barge for use on Lake Waconia has proved to be extremely beneficial. The county board is pleased with the Waterfront Service Center design and is continuing to secure funding for the project.
- 7) Open to the Public (6:39 p.m.)
 - a. There were no public comments.
- 8) New Business (6:39 p.m.)
 - a. Special Use Permit Request: Winter Polar Plunge, Presented by Special Olympics Minnesota
 - i. Sam Pertz introduced the event and it's event coordinator Catherine Jensen. This will be the 2nd polar plunge hosted at Lake Waconia Park. The permit will include use of the grounds/lake, setting up of tents, and a possible food truck. The event will occur on 2/12/22 from late morning to mid-afternoon, with set up beginning on 2/11/22. The City of Waconia and Carver County Sheriff's Office have been involved with permitting and supervision of the open water area. A shuttle for participants and spectators may be available which will help to alleviate parking congestion and the public will still have full access to park amenities during the event. The county

will assist with snow and ice removal as needed. Upon the commissions approval, the request will advance to the county board.

- ii. Motion to approve the special use permit contingent on successful permitting made by M. Lagergren, Seconded by C. Kobilarcsik
- iii. Roll Call Vote: J. Boettcher – Aye, C. Kobilarcsik – Aye, M. Lagergren – Aye, S. Welvaert – Aye, G. Bruner – Aye; Passed 5-0

9) Discussion (6:50 p.m.)

a. Winter Recreation Operations

- i. Sam Pertz provided the 21-22 season overview. We anticipate having rentals on Saturday's, Sunday's, and holidays 1/1/22 – 3/13/22. Friday rentals will not be offered this upcoming season. Lessons, day camps, and events are planned as well. Fall, winter, and spring requests are increasing, so it may be necessary to review our staffing and resources in order to meet the demand set by the public.

10) Staff Reports (6:58 p.m.)

a. Waconia Regional Park Waterfront Service Center Update

- i. The county board approved the larger 80 seating capacity event center. In lieu of a concession stand, multiple indoor and outdoor food service counters are being considered. The placement of drinking fountains and storage units is also being discussed. The event center is designed to be a flexible and functional space for family events, business meetings, classroom settings, etc. The Met Council has applied for ARP funding, but at this time it is not known what funds will be available to be allocated to Carver County Parks & Rec. Lake Riley Park in Eden Prairie has done some recent park improvements that may be helpful to take a look at for ideas.

b. Coney Island Vault Latrines

- i. These are designed as simple and durable structures. All will be unisex with no electricity. There will be one on west and one on the east side of the island.

c. TH 5 Regional Trail

- i. The trail is completely open and receiving traffic typical for this time of year. Many positive comments have been received on it. Details such as fencing are still being worked on. Graffiti protectant was applied to the culvert which seems to be working well. Because vandals avoid being seen, security cameras have not been found to be an effective deterrent to vandalism.

d. Park General Operations & Recreation Services

- i. Sam Pertz stated we are preparing for the upcoming winter season. Activities depend on the weather. At the off leash dog area at LMP, patrons have been witnessed not respecting the small/large dog areas. Without park rangers on site to enforce the rules, perhaps signage could be updated. Vehicle break-ins have also been a concern in the parks, specifically Lake Minnewashta. The area is signed and all incidents have been reported to the sheriff's office. County staff have not been able to identify any suspicious activity.

e. Maintenance and Operation Report

- i. Jacob Sandvig reported all vehicles have been inspected and are operational for snow removal and trail grooming. Coney Island docks are being worked on, gravel pads will be installed at BP Campground, and trails will be trimmed.

11) Commission Member Reports (7:34 p.m.)

- a. The TH5 ribbon cutting was an impressive experience.
- b. It's been a successful year and looking forward to another in 2022.

12) Set Next Meeting Date (7:40 p.m.) – January 12, 2022

- a. We will continue virtual meetings via Microsoft Teams.

CARVER COUNTY

13) Adjourn Meeting (7:41 p.m.)

- a.** Motion to adjourn the meeting at 7:41 p.m. made by G. Van Eyll, Seconded by J. Boettcher
- b.** Roll Call Vote: J. Boettcher – Aye, C. Kobilarcsik – Aye, M. Lagergren – Aye, S. Welvaert – Aye, G. Van Eyll – Aye, G. Bruner – Aye; Passed 6-0



CARVER COUNTY



**Carver
County
Parks**

11360 Highway 212 West, Suite 2
Cologne, MN 55322

MEMO

TO: Members of the Park Commission
FROM: Martin Walsh, Parks and Recreation Director
SUBJECT: Plan Update for Lake Waconia Regional Park Waterfront Service Center
DATE: January 7, 2022

Park Commission Members,

Consulting architect HGA has been working on the 50% construction document set for the new building at Waconia Regional Park.

Progress has been made at refining some of the room spaces. Additional work was done to allow for dividing the event/activity room into two spaces with a retractable wall. The ability to divide the room increases functionality, especially for classroom type activities, and makes the space more comfortable for smaller gatherings. A side benefit is the additional support structure for the wall has shortened some of the structural comments of the room and reduced related structural component costs. This will help off-set the costs for infrastructure of the retractable wall.

Other noticeable refinements include improvements to the lobby area which provide better circulation and access to the event/activity room. Separate entrances to activity rooms A and B were added, along with separate organized storage space for coats, backpacks, shoes/boots, etc. for each room.

The kitchenette area has increased in size slightly by taking some space from the lobby and is shown with a food service counter. The storage area for tables, chairs, audio visual equipment, and low voltage equipment has also increased in size.

Site planning also continues to be refined. Space for rental watercraft storage, access routes are better defined, location of a shower tower, drinking fountain, and landscape plantings are depicted.

Attached is a brief presentation we will run through during the meeting which provides images of the site plan, landscaping, site furnishings, and examples of exterior and interior finishes. The current floor plan design is at the end of the presentation.

Martin Walsh
Parks & Recreation Director

CARVER COUNTY



LAKE WACONIA REGIONAL PARK WATERFRONT SERVICE CENTER

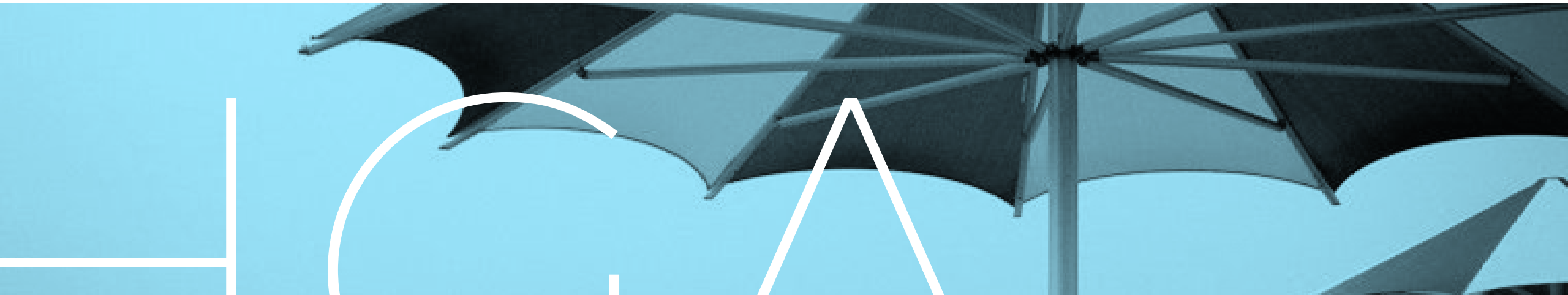
Site Review and Material Palette Presentation

January 6, 2022



AGENDA

1. Site Design Review
2. Exterior Materials and Finishes
3. Interior Materials and Finishes

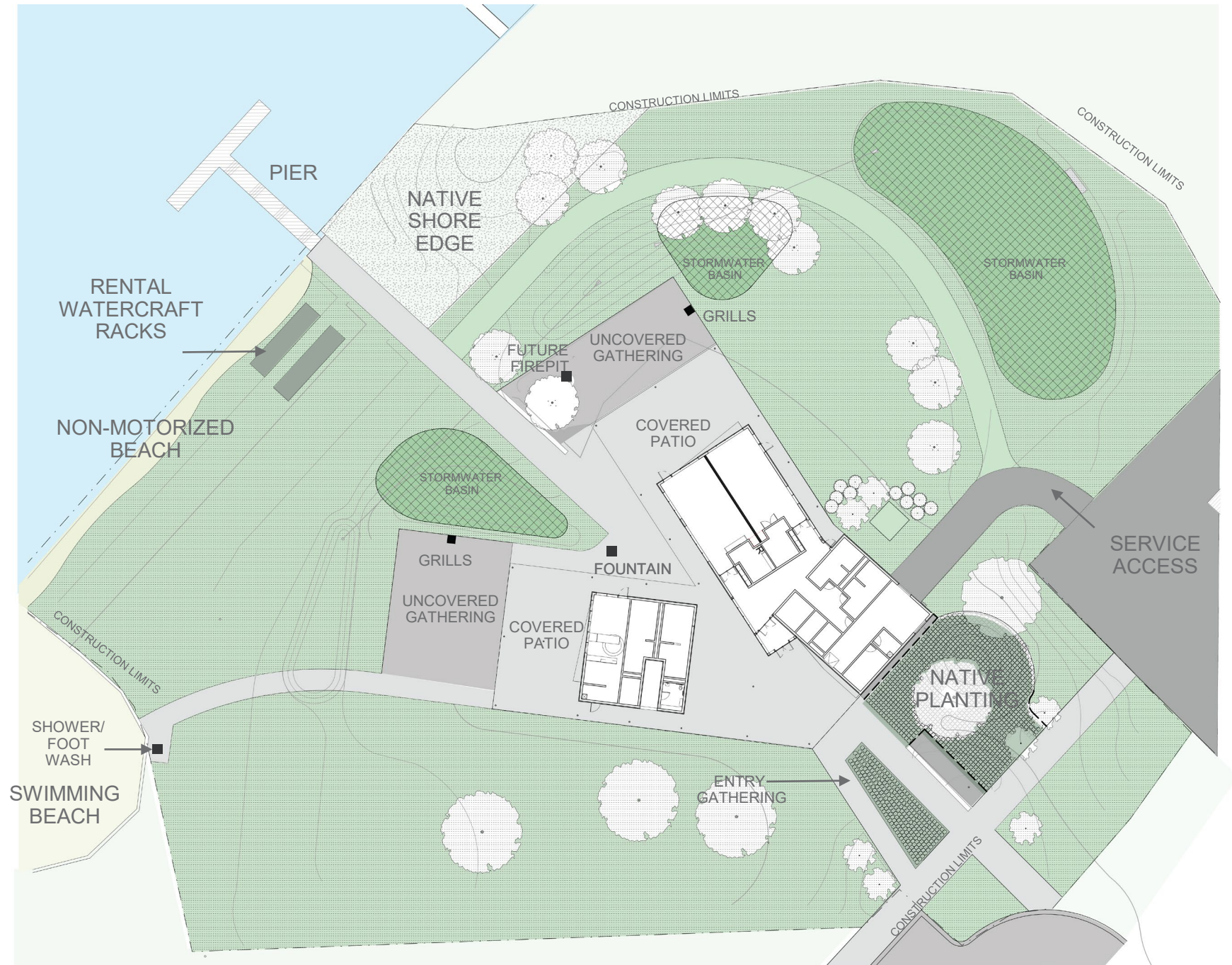


SITE DESIGN REVIEW

Site Scope and Details



LANDSCAPE PLAN



ACCESS DRIVE MATERIAL



GRASS PAVE



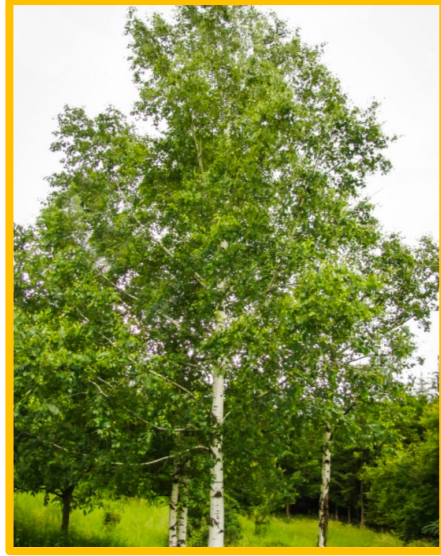
AGGREGATE

PLANTING MATERIALS

TREES



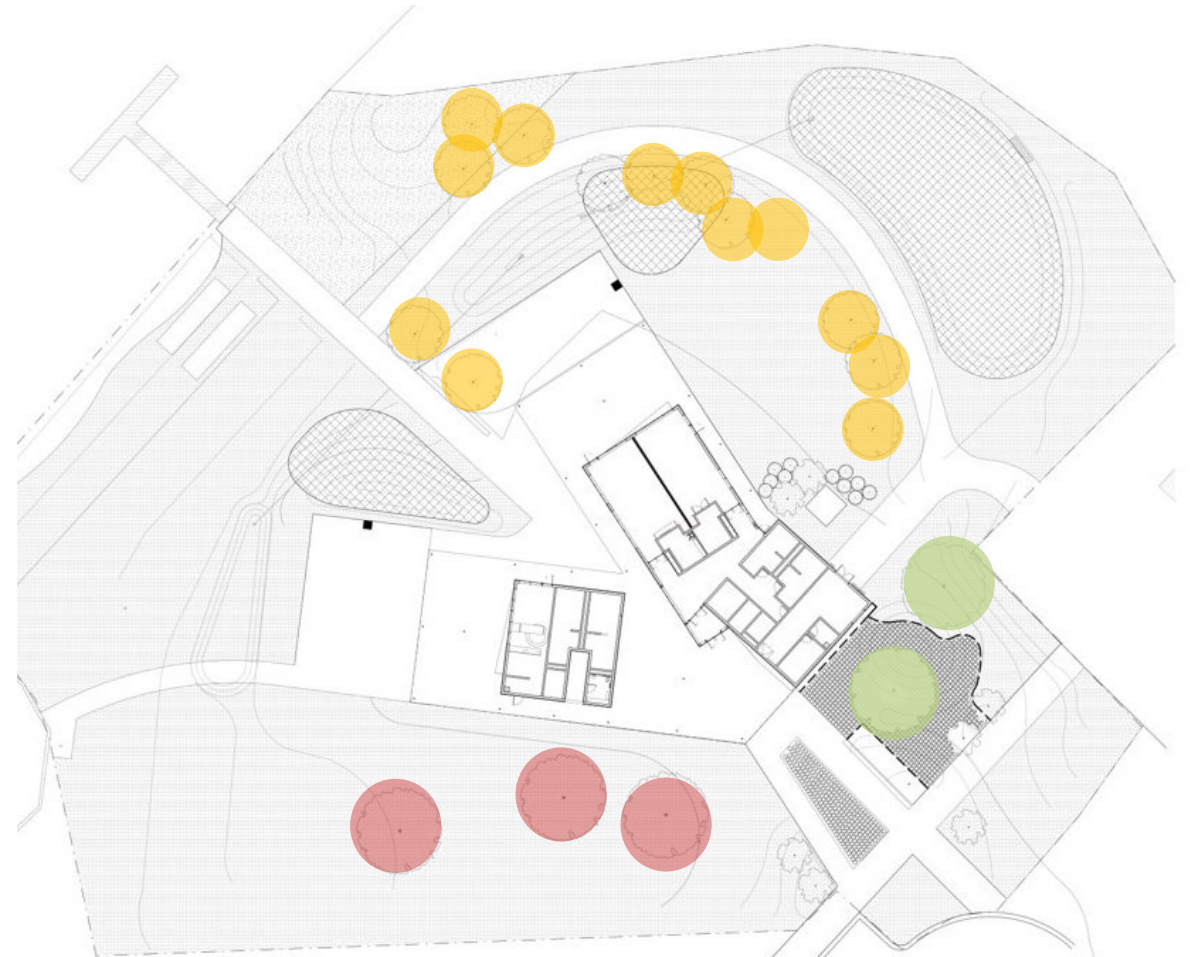
Autumn Blaze Maple
Acer x freemanii 'Jeffersred'



Renaissance Oasis Paper Birch
Betula papyrifera 'Renaissance Oasis'



Burr Oak**
Quercus macrocarpa



**B3 Keystone Species

PLANTING MATERIALS

SHRUBS AND GRASSES



LACETTE FRAGRANT SUMAC
Rhus aromatica



**AUTUMN BRILLIANCE
SERVICEBERRY****
Amelanchier x Grandiflora
'Autumn Brilliance'



HEAVY METAL SWITCHGRASS
Panicum virgatum 'Heavy Metal'



**B3 Keystone Species

PLANTING MATERIALS

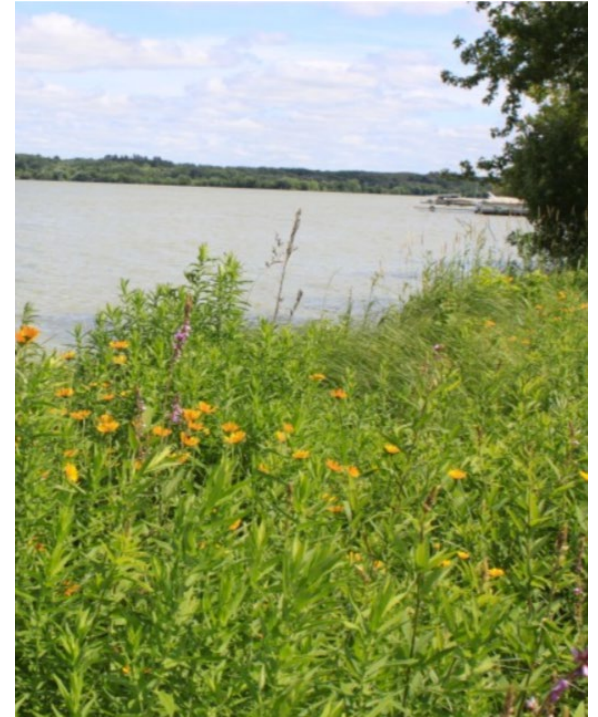
SEED AND PLUGS



LAWN
Bee Lawn



STORMWATER BASIN PLANTING
Tufted Hairgrass



SHORELINE PLANTING
Shoreline Seed Mix

SHOWERS & FOUNTAINS



MOST DEPENDABLE FOUNTAINS 500 SM SERIES

COLOR: TEXTURED BLACK

- INCLUDES 2 SHOWER HEADS & FOOTWASHING STATION
- PUSH BUTTON OPERATED
- WINTERIZATION AVAILABLE



MOST DEPENDABLE FOUNTAINS 10140 SM SERIES

COLOR: TEXTURED BLACK

- OPTIONAL ATTACHMENTS INCLUDING PET FOUNTAIN, HANDWASHING VALVE
- WINTERIZATION AVAILABLE

SITE FURNITURE



LOLL DESIGNS
PARK CHAIR



LOLLTRADE
LOLLYGAGGER PICNIC BENCH (39")
LOLLYGAGGER PICNIC TABLE (56")



PILOT ROCK
J-20 SERIES ADJUSTABLE
CHARCOAL GRILL

EXTERIOR MATERIALS AND FINISHES



EXTERIOR MATERIALS

WALLS & SOFFITS

- Commercial Grade Hardie Panel with battens
- Color options – prefinished and field painted
- Metal flashing to protect base of walls
- Alaskan Yellow Cedar soffits/Hardie Panel soffit with reveals at vestibule area

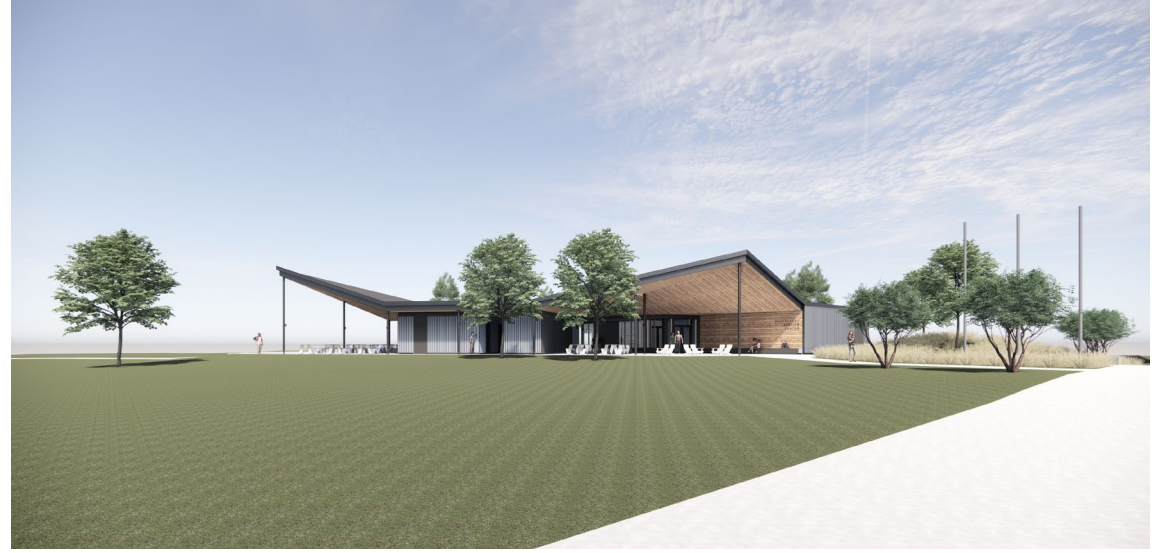
WINDOWS/EXTERIOR DOORS

- Fixed Aluminum Clad Wood Windows and Doors, Pella/Marvin/Andersen type
- Color options for aluminum cladding
- Standard clear sealed pine frames
- Clear, low-e insulated glazing units with bird friendly ceramic frit pattern

ROOF

- Asphalt shingles at exposed areas / alternate for standing seam metal
- Formed sheet metal roof edges/fascias
- Membrane roofing where not exposed to view

EXTERIOR VIEWS

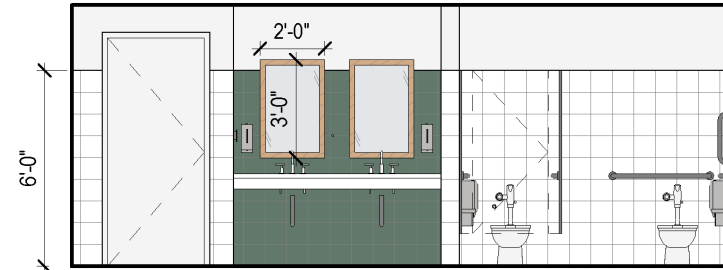
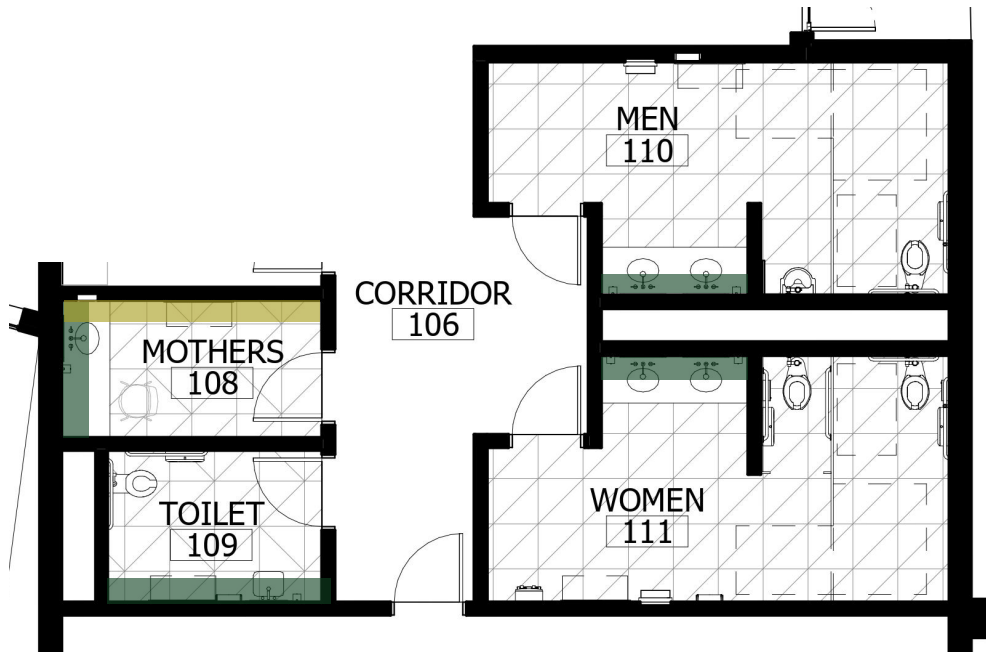


INTERIOR MATERIALS AND FINISHES

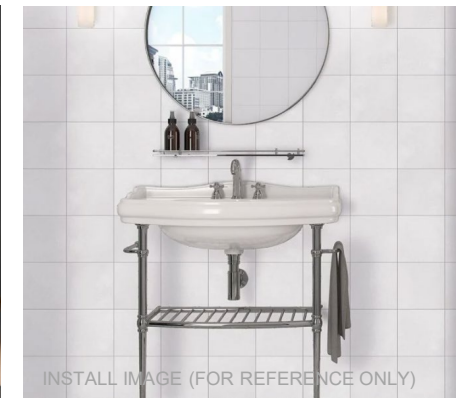
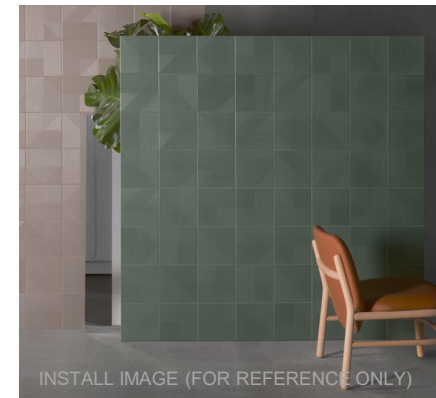
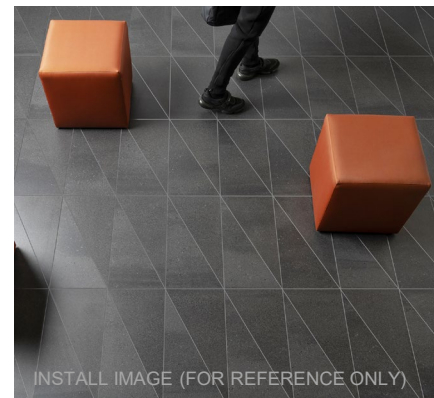
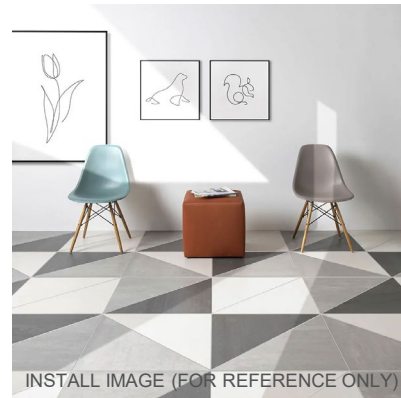


INTERIOR RESTROOMS

MEN, WOMEN, ALL GENDER & MOTHERS ROOM

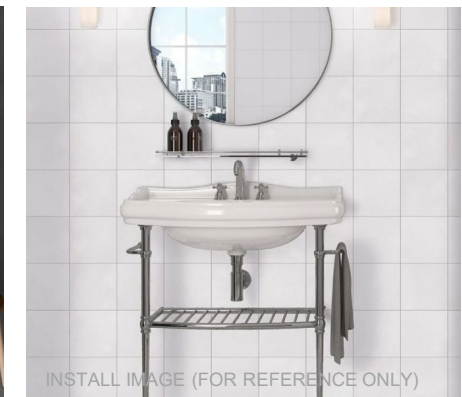
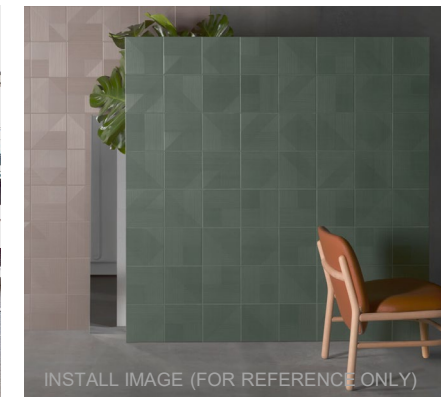
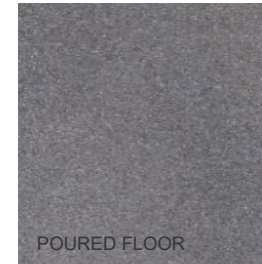
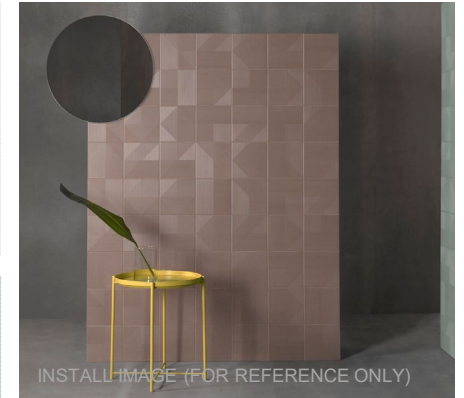
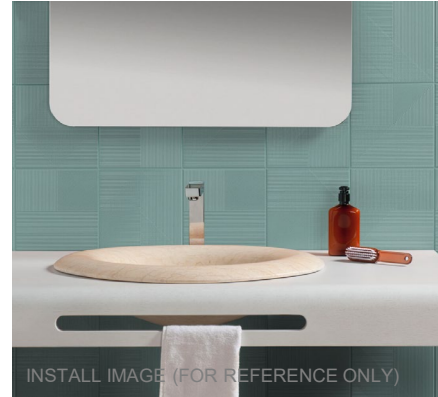
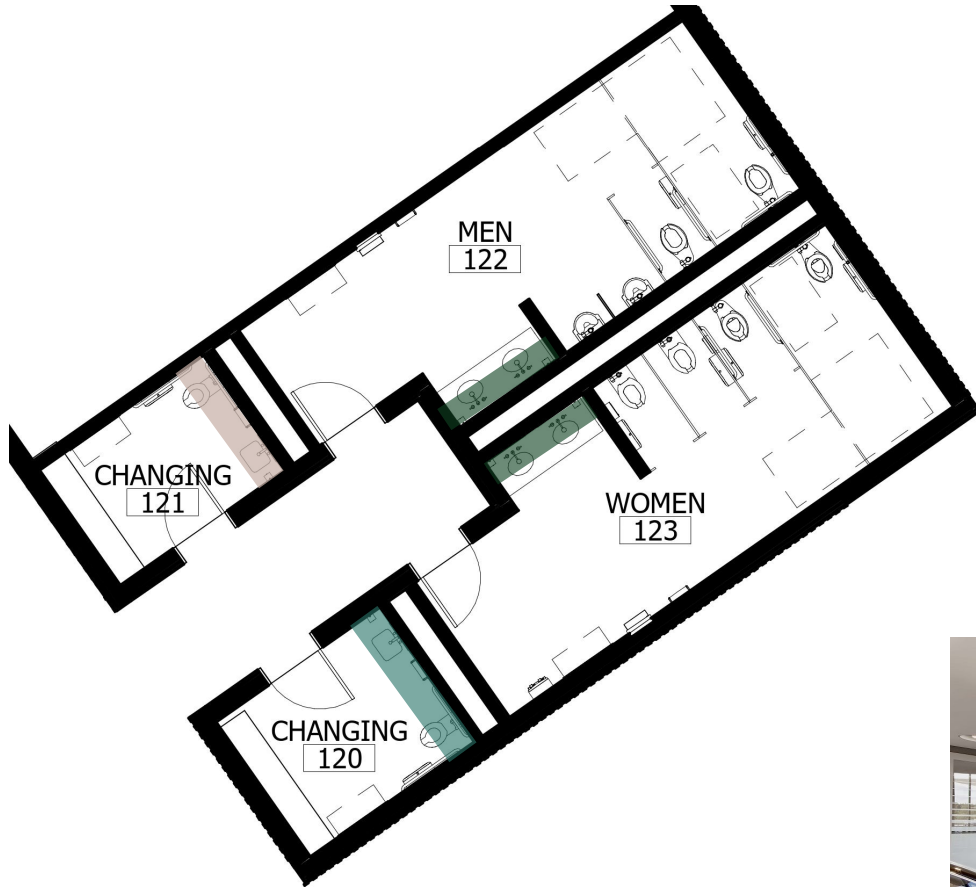


ELEVATION @ WOMEN 111



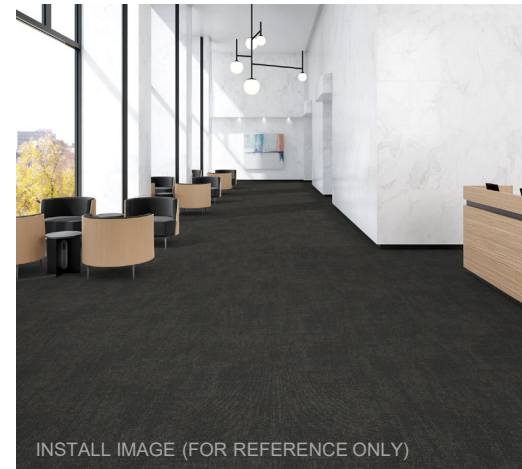
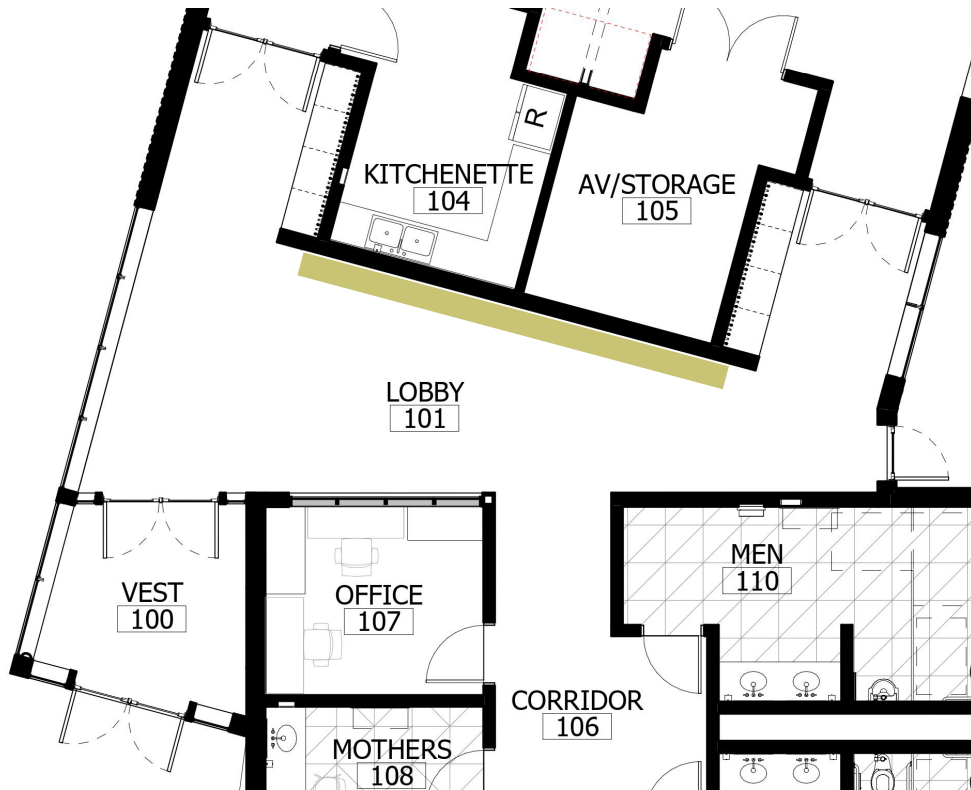
EXTERIOR RESTROOMS

MEN, WOMEN, CHANGING ROOMS

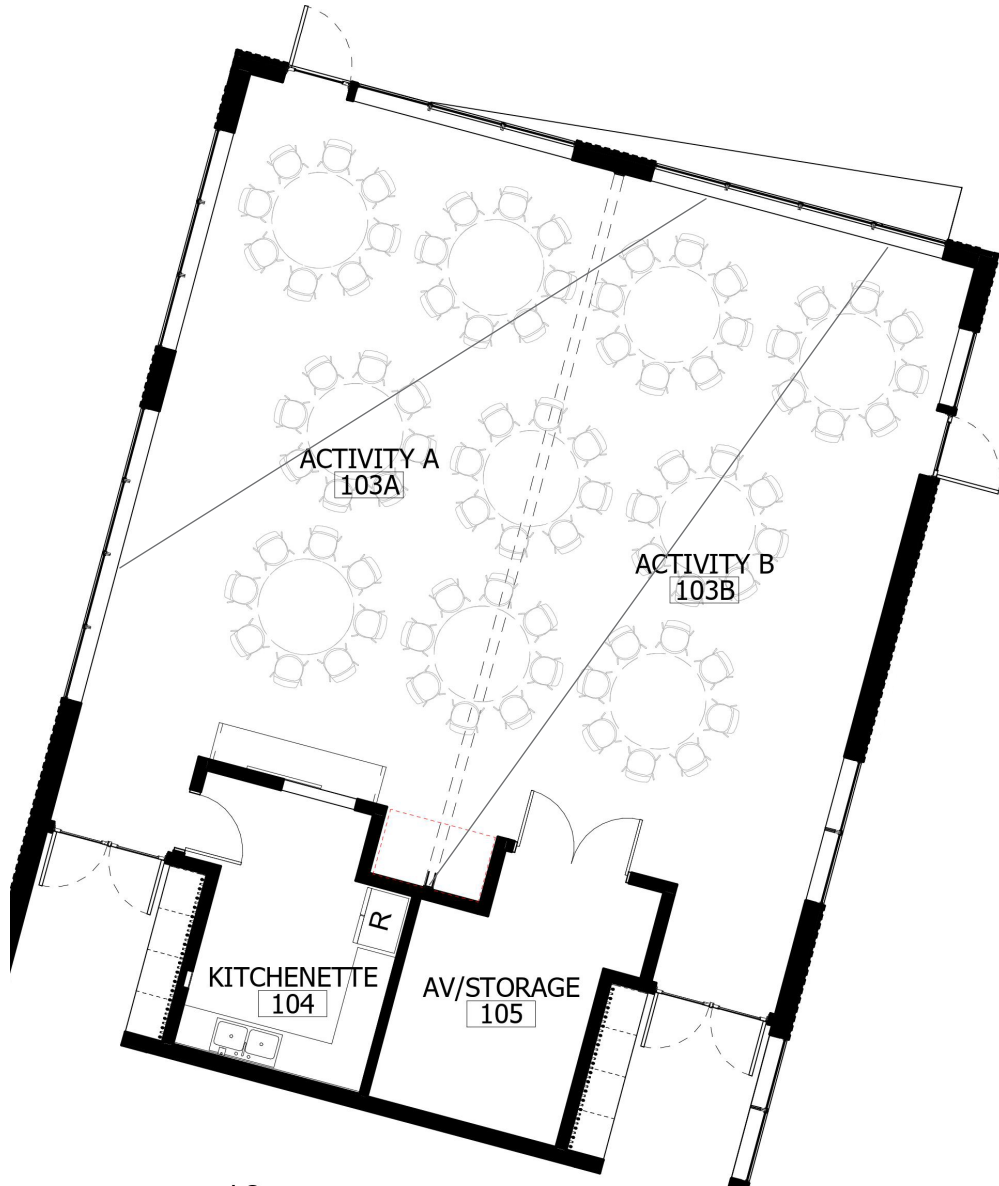


ENTRANCE

VESTIBULE, LOBBY, OFFICE



ACTIVITY ROOM & KITCHENETTE



FABRIC @ OPERABLE WALL



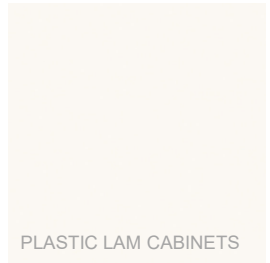
RESILIENT FLOOR TILE



WALL TILE



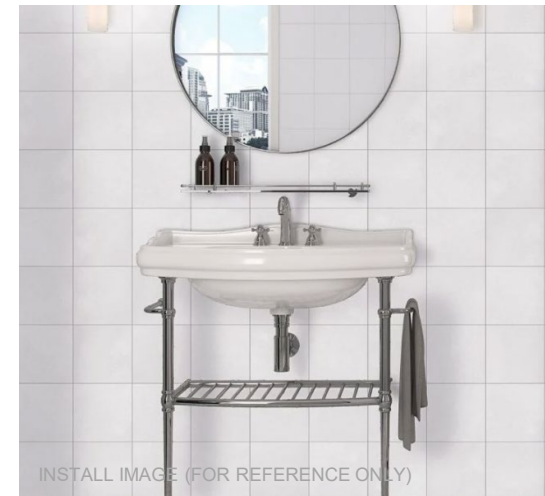
QUARTZ COUNTERTOP



PLASTIC LAM CABINETS



INSTALL IMAGE (FOR REFERENCE ONLY)

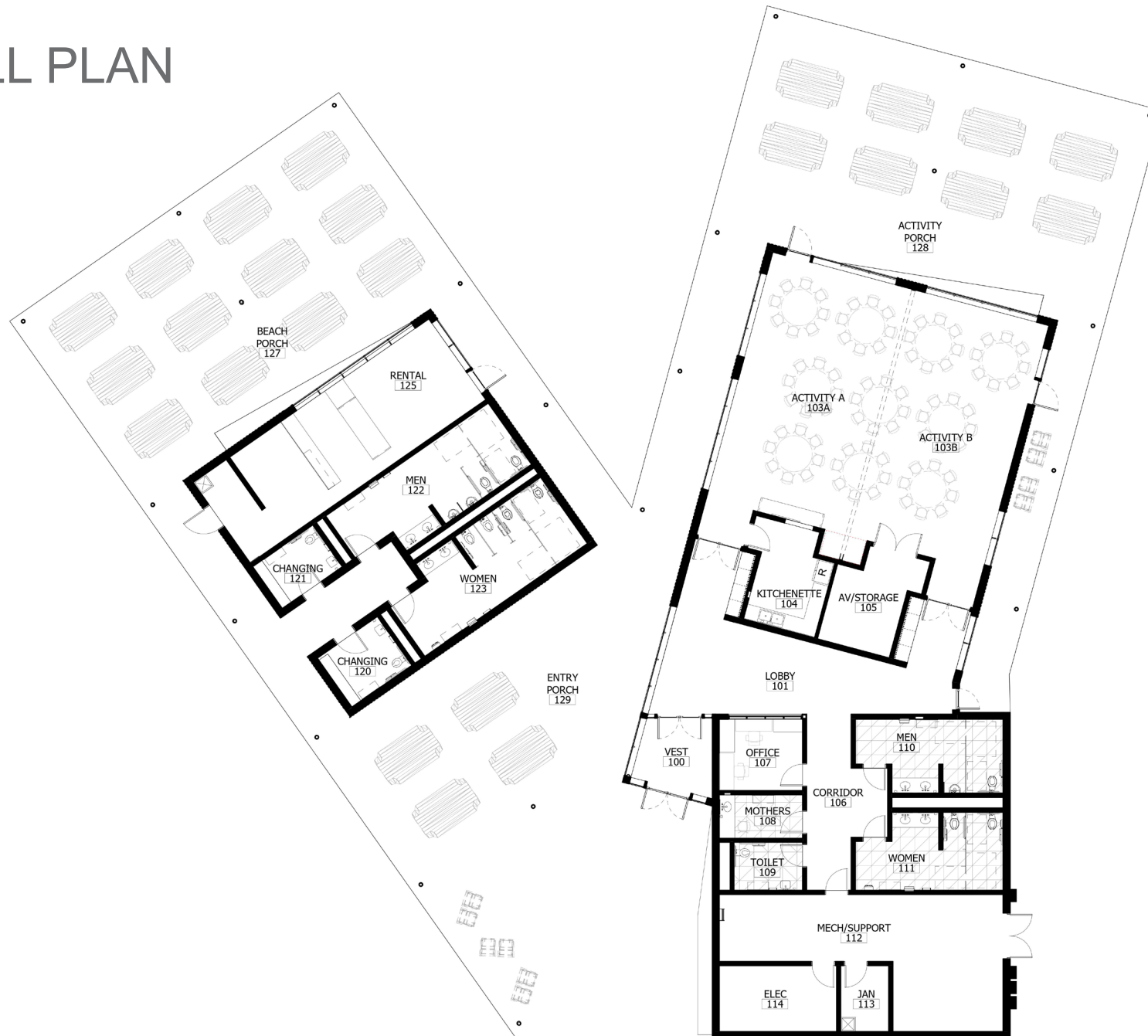


INSTALL IMAGE (FOR REFERENCE ONLY)



STAINLESS COUNTERTOP

OVERALL PLAN





Questions and Discussion