

Committee of the Whole Meeting
 August 20, 2013
 2:30 p.m.
 Oak Lake Conference Room



Carver County Board of Commissioners
 August 20, 2013
 Regular Session
 County Board Room
 Carver County Government Center
 Human Services Building
 Chaska, Minnesota

PAGE

4:00 p.m.	1.	<ul style="list-style-type: none"> a) CONVENE b) Pledge of allegiance c) Public comments (limited to five minutes) d) New Employee Introductions 	
	2.	Agenda review and adoption	
	3.	Approve minutes of August 6, 2013 Regular Session.....	1-3
	4.	Community Announcements	
4:10 p.m.	5.	CONSENT AGENDA	
		<i>Connections: Develop strong public partnerships and connect people to services and information</i>	
		5.1 Charitable Gambling Application for Exempt Permit - Delano Ducks Unlimited	4
		5.2 Tobacco license	5
		<i>Communities: Create and maintain safe, healthy and livable communities</i>	
		5.3 Purchase of portable equipment hoist system for Public Works	6
		5.4 Purchase of tandem axle plow truck for Public Works	7
		5.5 Resolution for Southwest Reconnection Project (101/61 Bridge and Y).....	8-10
		5.6 Resolution authorizing offers for right of way for the Southwest Reconnection Project (101 Bridge and CSAH 61 'Y').....	11-15
		5.7 Request for approval to contract with various vendors for refuse and recycling disposal	16-17
		5.8 Request for approval to contract with Minnesota Housing Finance Agency.....	18
		5.9 Purchase of Chip Spreader for Public Works	19
		<i>Culture: Provide organizational culture fostering accountability to achieve goals and sustain public trust/confidence in County government</i>	
		5.10 Out of State Travel - Facilities MWIII - Siemens Apogee PPCL Programming Course Buffalo Grove, IL.....	20
		5.11 Out of State Travel - Microsoft CRM User Group Conference	21
		<i>Finances: Improve the County's financial health and economic profile</i>	
		5.12 Abatements/Additions	22-23
		5.13 Review Social Services/Commissioners Warrants	NO ATT

- 4:10 p.m. **6. COMMUNITIES: Create and maintain safe, healthy and livable communities**
6.1 Child Support Awareness Month 24-28
6.2 Award of Bid for SAP 010-643-012: Reconstruction of CSAH 43
bridge #10501 over Carver Creek 29-31
- 4:25 p.m. **7. FINANCES: Improve the County’s financial health and economic profile**
7.1 Approve the creation of a case management associate position series.. 32
- 4:30 p.m. **8. CULTURE: Provide organizational culture fostering accountability to achieve goals and sustain public trust/confidence in County government**
8.1 Approve creation of a recreation therapist for the Encore Program..... 33
- 4:40 p.m. **RECESS AS COUNTY BOARD AND CONVENE AS CARVER COUNTY REGIONAL RAIL AUTHORITY**
- 4:40 p.m. **9. CONNECTIONS: Develop strong public partnerships and connect people to services and information**
9.1 Approve utility easement agreement in U.P. Railroad corridor with City of Chaska 34
- 4:45 p.m. **ADJOURN AS CARVER COUNTY REGIONAL RAIL AUTHORITY AND RECONVENE AS CARVER COUNTY BOARD**
- 4:45 p.m. **10. GROWTH: Manage the challenges and opportunities resulting growth and Development**
10.1 *Closed Session* - Future CSAH 92 property acquisition opportunity..... 35
- 5:30 p.m. **ADJOURN REGULAR SESSION**
- 5:30 p.m. **BOARD REPORTS**
1. Chair
2. Board Members
3. Administrator
4. Adjourn

David Hemze
County Administrator

UPCOMING MEETINGS

- | | |
|--------------------|-----------------------------|
| August 27, 2013 | 9:00 a.m. Board Meeting |
| September 3, 2013 | 9:00 a.m. Board Meeting |
| September 10, 2013 | 9:00 a.m. Work Session |
| September 17, 2013 | 2:30 Committee of the Whole |
| September 17, 2013 | 4:00 p.m. Board Meeting |

A Regular Session of the Carver County Board of Commissioners was held in the County Government Center, Chaska, on August 6, 2013. Chair Tim Lynch convened the session at 9:00 a.m.

Members present: Tim Lynch, Chair, James Ische, Vice Chair, Gayle Degler, Randy Maluchnik and Tom Workman.

Members absent: None

Degler moved, Workman seconded, to approve the agenda. Motion carried unanimously.

Maluchnik moved, Ische seconded, to approve the minutes of the July 23, 2013, Regular Session. Motion carried unanimously.

Community announcements were made by the Board.

Ische moved, Degler seconded, to approve the following consent agenda items:

Approved Public Health Emergency Preparedness and Cities Readiness Initiative grant award from the Minnesota Department of Health as the Community Health Board and related budget amendment.

Awarded contract to Wm. Mueller & Sons for the 2013 Federal overlay projects in the amount of \$2,186,750.68

Awarded contract to Bituminous Roadways, Inc. for 2013 County overlays, alternative bid #1, in the amount of \$1,119,515.70.

Approved tobacco license to Southern Sands, Inc. dba Down South Bar & Grill.

Professional Services agreement with SRF Consulting Group, Inc. for TH 212 corridor planning.

Adopted Findings of Fact and issued Order #PZ20130018 for the issuance of Conditional Use Permit #PZ20130018, Rheingold Stables LLC, Watertown Township.

Authorized the issuance of a Certificate of Zoning Compliance (A20130040) for a concert on September 7, 2013, (rain date-September 8, 2103) Sovereign Estate Wine.

Reviewed July 30, 2013, Community Social Services' actions/Commissioners' warrants in the amount of \$396,272.17 and August 6, 2013, Community Social Services' actions/Commissioners' warrants in the amount of \$429,481.97.

Motion carried unanimously.

Lyndon Robjent, Public Works, requested the Board approve a conditional use permit for the CSAH 43 bridge replacement project. He explained Public Works has been working on several bridges and this bridge was in dire need of replacement. He stated the bridge was a 1962 structure, with a sufficiency rating of 49 and with 1200 vehicles per day traveling the road.

He highlighted the proposed project, estimated cost and funding sources. Robjent pointed out the bid opening date and anticipated completion date of October 3rd. He stated the road would be closed 21 days and identified the detour route.

Robjent outlined the concerns of the township due to the concurrent project on 41 that would be starting next week. He stated he reviewed the concerns but there was no way not to have both roads closed at the same time. He indicated, to mitigate the concerns, the bid documents were revised to include an incentive to complete the project faster as well as an alternate to start the project next year. He noted they would wait until the bids were opened to make a decision on the alternates. Robjent pointed out the full workload of contractors for this year and suggested it may make sense to do it next year to get a better price.

He stated the project met the WMO requirements, was recommended by the Township with their concerns and was recommended by the Planning Commission.

The Board acknowledged the concerns of the road closures by the Township and recognized a final decision can be made after bids come in. Robjent clarified they will also monitor the traffic situation on the township road detours and will assist with maintenance if needed.

Maluchnik moved, Ische seconded, to adopt Findings of Fact and issue Order PZ20130014 for the issuance of a Conditional Use Permit, Carver County Public Works. Motion carried unanimously.

Robjent requested the Board award the bid for the construction of the Southwest Regional Trail project. He explained they were successful in getting federal funds and identified the location of the first segment to be constructed in Chaska and the second segment in Victoria. He stated both segments would be paved and identified the agreements reached with other entities to get to this point.

He reviewed the projects costs and funding sources. He stated both the Cities of Chaska and Victoria have concurred in the bid award.

Degler clarified he would be abstaining because of his proximity to the project and his work with people in that general area.

Workman moved, Maluchnik seconded, to award a contract to Sunram Construction, Inc., for \$622,569 to construct the Southwest Regional Trail and authorize the Chair to sign. Ische, Lynch, Maluchnik, Workman voted aye. Degler abstained. Motion carried.

Robgent requested the Board approve a joint powers agreement with the City of Carver for the 4th Street bridge replacement and CSAH 11 trail construction. He stated bids were opened by the City and they needed the County's concurrence in the award. He indicated the County is responsible for a share of the trail cost on CSAH 11 based on the updated road policy.

Ische moved, Maluchnik seconded, to approve the joint powers agreement with the City of Carver subject to review and approval of County Attorney/Risk and to concur with the City of Carver in the award of the contract to S.M. Hentges and Sons, Inc. Motion carried unanimously.

Ische moved, Degler seconded, to recess as the County Board and convene as the Carver County Regional Rail Authority. Motion carried unanimously.

Robgent requested the Rail Authority approve an agreement with the City of Carver for an easement for the levee that is on railroad property. He noted the acquisition of the former Union Pacific Railroad had multiple funding sources. He stated the City agreed to share with the cost of acquisition and the County would give them an easement to protect their levee.

Degler moved, Ische seconded, to enter into an easement agreement with the City of Carver for the Carver levee pending finalization of the contract review process. Motion carried unanimously.

Degler moved, Ische seconded, to adjourn as the Rail Authority and reconvene as the Carver County Board of Commissioners. Motion carried unanimously.

Ische moved, Maluchnik seconded, to go into closed session according to Minnesota Statute 13D.05 to review confidential settlement proposals for the CSAH 11 construction project. Motion carried unanimously.

The Board adjourned the closed and Regular session at 11:15 a.m.

David Hemze
County Administrator

(These proceedings contain summaries of resolutions/claims reviewed. The full text of the resolutions and claims reviewed are available for public inspection in the office of the county administrator.)

Carver County Board of Commissioners Request for Board Action



Agenda Item:

Charitable Gambling Application for Exempt Permit - Delano Ducks Unlimited

Primary Originating Division/Dept: <input type="text" value="Property Records & Taxpayer Services"/>	Meeting Date: <input type="text" value="8/20/2013"/>
Contact: Sarah Rivers Title: <input type="text"/>	Item Type: Consent <input type="text"/>
Amount of Time Requested: <input type="text"/> minutes Presenter: <input type="text"/> Title: <input type="text"/>	Attachments: <input type="radio"/> Yes <input checked="" type="radio"/> No

Strategic Initiative:
 Connections: Develop strong public partnerships and connect people to services and information

BACKGROUND/JUSTIFICATION:

A Charitable Gambling application for Exempt Permit was received from Delano Ducks Unlimited. They plan to hold a raffle on Thursday, September 19, 2013, at B's on the River, located at 1455 County Rd 27, Watertown, MN 55388.

ACTION REQUESTED:

Approval to issue a Charitable Gambling License to Delano Ducks Unlimited for a raffle to be held of September 19, 2013

FISCAL IMPACT: <input type="text" value="None"/> If "Other", specify: <input type="text"/>	FUNDING County Dollars = <input type="text"/> <input type="text"/> Total <input type="text" value="\$0.00"/>
FTE IMPACT: <input type="text" value="None"/>	

Related Financial/FTE Comments:

Office use only:
 RBA 2012- 2056

Carver County Board of Commissioners Request for Board Action



Agenda Item:

Tobacco License

Primary Originating Division/Dept:

Meeting

Date:

Contact:

Title:

Item Type:

Amount of Time Requested: minutes

Presenter: Title:

Attachments: Yes No

Strategic Initiative:

Connections: Develop strong public partnerships and connect people to services and information

BACKGROUND/JUSTIFICATION:

Watertown Liquors, LLC dba Watertown Liquors has applied for a Tobacco License and is in compliance with the Carver County Tobacco Ordinance. The owner is requesting the Carver County Board of Commissioners approval to sell tobacco products.

ACTION REQUESTED:

Approval of the Carver County Board to issue a Tobacco License to Watertown Liquors, LLC dba Watertown Liquors.

FISCAL IMPACT:

If "Other", specify:

FUNDING

County Dollars =

FTE IMPACT:

Total

Related Financial/FTE Comments:

Office use only:

RBA 2012- 2060

Carver County Board of Commissioners Request for Board Action



Agenda Item:

Purchase of Portable Equipment Hoist System for Public Works

Primary Originating Division/Dept:

Contact: Title:

Amount of Time Requested: minutes

Presenter: Title:

Meeting
Date:

Item Type:
Consent

Attachments: Yes No

Strategic Initiative:

Communities: Create and maintain safe, healthy, and livable communities

BACKGROUND/JUSTIFICATION:

There is a shortage of heavy equipment hoist space in the Public Works shop in Cologne. When a vehicle is in for repair and we have to wait for parts it can tie up one of the existing hoists for an extended period of time. An additional lift will help expedite repairs on other vehicles when parts are on order. The hoist system can be set up in open stalls in the shop and moved around. The hoist system will lift everything from a lawn mower to a tandem axle truck. Public Works has elected to purchase a Rotary brand hoist system which is made in the United States, which simplifies service.

Public Works received quotes from 2 vendors, NAPA in Chaska and Pump and Meter in Hopkins. Both quoted new and demo sets of identical hoists. They both come with batteries, training and a set of screw jacks. Demo sets have new hoist warranty and are as new. Pump and Meters price was 5,300 dollars lower than NAPA's and included an additional 5 years of factory warranty.

ACTION REQUESTED:

Approve the purchase of a portable hoist system for \$38,100.00 from Pump and Meter, Hopkins, MN.

FISCAL IMPACT:

If "Other", specify:

FUNDING	
County Dollars =	
2012 Y.E.S.	\$38,100.00
Total	\$38,100.00

FTE IMPACT:

Related Financial/FTE Comments:

The County Board approved \$1,000,000 in 2012 Y.E.S for Public Works Equipment

Office use only:

RBA 2012- 2029

Carver County Board of Commissioners Request for Board Action



Agenda Item:

Purchase of Tandem Axle Plow Truck for Public Works

Primary Originating Division/Dept: <input type="text" value="Public Works - Highway Maintenance"/>	Meeting Date: <input type="text" value="8/20/2013"/>
Contact: <input type="text" value="Steve Tacheny"/> Title: <input type="text" value="Equipment Superintendent"/>	Item Type: <input type="text"/>
Amount of Time Requested: <input type="text"/> minutes	Consent: <input type="text"/>
Presenter: <input type="text"/> Title: <input type="text"/>	Attachments: <input type="radio"/> Yes <input checked="" type="radio"/> No

Strategic Initiative:

BACKGROUND/JUSTIFICATION:

Public Works has prepared an equipment replacement schedule. The replacement plan is based on age and vehicle condition index score. Tandem trucks are considered the most important equipment in the fleet due to their year round use and utilization. This new tandem will replace a 2000 model year truck. The maintenance costs on this unit are increasing each year and it is in need of replacement. The engine has a considerable amount of blowby due to cylinder wear and will soon need an engine overhaul. In addition there are transmission and engine electrical issues due to corrosion in the wiring harness.

Cost of new equipment= \$115,000

Cost of new chassis= \$136,000

Total amount requested=\$251,000

The truck will be a Mack as is available from the State Contract. Nuss Truck and Equipment is the supplier.

No local business in Carver County offers this specialized equipment.

ACTION REQUESTED:

Approve purchase of a Mack tandem axle plow truck for \$251,000 form Nuss Truck and Equipment

FISCAL IMPACT: <input type="text" value="Included in current budget"/>	FUNDING
<i>If "Other", specify:</i> <input type="text"/>	County Dollars = <input type="text" value="\$0.00"/>
FTE IMPACT: <input type="text" value="None"/>	2012 Y.E.S. <input type="text" value="\$251,000.00"/>
	Total <input type="text" value="\$251,000.00"/>

Related Financial/FTE Comments:

The County Board approved \$1,000,000 in 2012 Y.E.S. for Public Works Equipment

Office use only:

RBA 2012- 2071

Carver County Board of Commissioners Request for Board Action



Agenda Item:

Resolution for Southwest Reconnection Project (101/61 Bridge and Y)

Primary Originating Division/Dept:

Contact: Title:

Amount of Time Requested: minutes

Presenter: Title:

Meeting
Date:

Item Type:
Consent

Attachments: Yes No

Strategic Initiative:

Communities: Create and maintain safe, healthy, and livable communities

BACKGROUND/JUSTIFICATION:

Carver County submitted a request to the Minnesota Management and Budget (MMB) Office for a 2014 Capital Appropriations request (State Bonding) for \$16,500,000 for the construction of the 101 Bridge and 61 Y Intersection project scheduled for 2014. This request would reduce the County's financial obligation to the project

The MMB requires a resolution of support from the County Board, a draft of which is attached.

ACTION REQUESTED:

Adopt a resolution requesting 2014 State Capital Appropriations for the Southwest Reconnection Project

FISCAL IMPACT:
If "Other", specify:

FUNDING	
County Dollars =	<input type="text" value=""/>
	<input type="text" value=""/>
Total	\$0.00

FTE IMPACT:

Related Financial/FTE Comments:

Office use only:

RBA 2012- 2055

**BOARD OF COUNTY COMMISSIONERS
CARVER COUNTY, MINNESOTA**

Date: _____
Motion by Commissioner: _____

Resolution No: _____
Seconded by Commissioner: _____

**RESOLUTION REQUESTING STATE CAPITAL IMPROVEMENT BONDS FOR THE
SOUTHWEST RECONNECTION PROJECT**

WHEREAS, Flooding from snow melt and rainfall often closes the Trunk Highway ("TH") 101, TH 41 and County State Aid Highway ("CSAH") 11 Minnesota River crossings, which has a detrimental effect on traffic in the region; and

WHEREAS, Closures of these roadways affects approximately 40,000 vehicle trips every day, and detouring these vehicles puts a massive burden on the area's economy by increasing congestion on TH 169 and TH 494 and other highways and significantly extending the commute for many travelers. Having these roads impassable is also a severe strain on emergency response access between Scott and Carver Counties; and

WHEREAS, The Minnesota of Transportation (MnDOT) has prepared a Minnesota River Flood Mitigation Study ("Study") which modeled the effect of the 10-yr, 50-yr, 100-yr, and 500-yr flood events at the TH 101 and TH 41 river crossings, modeled the impact to traffic with current volumes and expected 2030 volumes, prepared alternatives to construct new bridges at TH 101 and TH 41 to keep the highways open during the 10-yr and 50-yr flood events, and calculated the Benefit to Cost ("B/C") ratio of constructing these bridges as well as capacity improvements on the TH 169 river crossing; and

WHEREAS, The Study estimates the costs of closing TH 101 and TH 41 due to flooding is \$670,000 per day for existing traffic and \$1,675,000 for 2030 traffic; and

WHEREAS, The Study measured the Benefit to Cost Ratio (B/C) to construct the TH 101 bridge to be 3.81 and the B/C to construct the TH 41 bridge to be 3.06, and it is evident that with a B/C greater than 1.0 that the new bridges will provide great benefit to the travelling public and investing in the improvements is clearly warranted; and

WHEREAS, The TH 101 bridge was submitted for flood mitigation bonds and was selected for \$20 million; and

WHEREAS, Carver County has partnered with MnDOT, Scott County and the Cities of Chanhassen and Shakopee to construct the TH 101 Bridge as well as improvements to the CSAH 61/TH 101 Wye intersection; and

WHEREAS, Construction for the collective improvements, known as the Southwest Reconnection Project is scheduled to begin in 2014 with Carver County as the lead agency for the project; and

WHEREAS, The total cost for the Southwest Reconnection Project is estimated at \$65,730,000, which includes project development, land acquisition, and construction costs. The bridge improvements and approaches are estimated to cost \$40,260,000 and the CSAH 61 improvements are estimated to cost \$25,440,000.

NOW, THEREFORE, BE IT RESOLVED, that the Board of Commissioners of Carver County considers the Southwest Reconnection Project critical to the economic welfare, safety and quality of life of its residents and the region as a whole, and requests a 2014 Capital Appropriation from the State of Minnesota in the amount of \$16,500,000 to fully fund the project; and

NOW, THEREFORE, BE IT FURTHER RESOLVED, that the Board of Commissioners of Carver County considers this project the highest priority capital improvement project for 2014 and has already secured all remaining funding in the amount of \$49,230,000.

YES	ABSENT	NO
_____	_____	_____
_____	_____	_____
_____	_____	_____
_____	_____	_____
_____	_____	_____

STATE OF MINNESOTA
COUNTY OF CARVER

I, Dave Hemze, duly appointed and qualified County Administrator of the County of Carver, State of Minnesota, do hereby certify that I have compared the foregoing copy of this resolution with the original minutes of the proceedings of the Board of County Commissioners, Carver County, Minnesota, at its session held on the 20th day of August, 2013, now on file in the Administration office, and have found the same to be a true and correct copy thereof.

Dated this 20th day of August, 2013.

Dave Hemze County Administrator

Subscribed and sworn to before me this
_____ day of _____, 2013.

Notary Public _____

My Commission expires _____

Notary Stamp

Carver County Board of Commissioners Request for Board Action



Agenda Item:

Resolution Authorizing Offers for Right of Way for the Southwest Reconnection Project (101 Bridge and CSAH 61 'Y')

Primary Originating Division/Dept: <input type="text" value="Public Works"/>	Meeting Date: <input type="text" value="8/20/2013"/>
Contact: <input type="text" value="Lyndon Robjent"/> Title: <input type="text" value="Public Works Division Director"/>	Item Type: <input type="text" value="Consent"/>
Amount of Time Requested: <input type="text" value=""/> minutes Presenter: <input type="text" value=""/> Title: <input type="text" value=""/>	Attachments: <input checked="" type="radio"/> Yes <input type="radio"/> No
Strategic Initiative: <input type="text" value="Communities: Create and maintain safe, healthy, and livable communities"/>	

BACKGROUND/JUSTIFICATION:

Carver County is preparing plans for the construction of the TH 101 bridge and CSAH 61 Y intersection (known as the Southwest Reconnection Project) in Chanhassen in 2014 and 2015.

The project requires the acquisition of easements from several property owners. Appraisals have been completed and the County is ready to make offers.

ACTION REQUESTED:

Adopt a resolution authorizing the Director of Public Works or agents to make written offers for right of way needed for the Southwest Reconnection Project.

FISCAL IMPACT: <input type="text" value="Included in current budget"/> If "Other", specify: <input type="text"/>	FUNDING County Dollars = <input type="text"/> <input type="text"/> Total <input type="text" value="\$0.00"/>
FTE IMPACT: <input type="text" value="None"/>	

Related Financial/FTE Comments:

Office use only:

RBA 2012- 2072

**BOARD OF COUNTY COMMISSIONERS
CARVER COUNTY, MINNESOTA**

Date: _____
Motion By Commissioner: _____

Resolution No: _____
Seconded by Commissioner: _____

**Resolution Authorizing Offers of Compensation to Landowners for
Easements Required for the TH 101 Bridge and CSAH 61 ‘Y’ Intersection
Project Also Known As the Southwest Reconnection Project**

WHEREAS, the Board of Commissioners of Carver County is the official governing body of Carver County (“County”); and

WHEREAS, the County, acting by and through its Board of Commissioners, is authorized by law to acquire land and other interests in real estate which are needed for public use or purpose; and

WHEREAS, Carver County wishes to construct roadway and related improvements as part of the TH 101 Bridge and CSAH 61 “Y” Intersection Project aka The Southwest Reconnection Project (“Project”); and

WHEREAS, in order to complete the Project it is necessary for the County to purchase property interests from each of the properties described in Exhibit A attached hereto; and

WHEREAS, the County has retained independent real estate appraisers to provide the County with the appraisers’ estimates of the damages caused by the County’s acquisition of the property interests required for the Project; and

WHEREAS, upon completion of the appraisals, the County must make offers of compensation to the land owners for the needed property interests consistent with the appraiser’s estimate of the damages being incurred by the various owners as a result of the County’s acquisitions.

NOW, THEREFORE, BE IT RESOLVED by the Carver County Board of Commissioners as follows:

1. The Board of Commissioners finds that it is necessary and for a public purpose for the County to acquire the property interests described in Exhibit A for the Project.
2. Based upon appraisals obtained by the County from independent real estate appraisers, the Director of Public Works or agents under his supervision shall make written offers of compensation to the property owners within the Project from whom

Exhibit A

Property Interests Required for TH 101 Bridge and CSAH 61 “Y” Intersection Project
Also known as The Southwest Reconnection Project

(Acquisition Parcel 4)
P.I.D. No. 25.035-0500

Estate of Harold F. Hesse

Taking of permanent easement for right of way purposes over Parcel 4, Carver County Right of Way Plat No. ____, County State Aid Highway No. 61 (containing 0.14 acres, more or less).

Taking of temporary easements over Parcel 4, Carver County Right of Way Plat No. ____, County State Aid Highway No. 61 (containing 0.07 acres, more or less, 0.05 acres more or less, and 0.06 acres more or less).

(Acquisition Parcel 6)
P.I.D. No. 25.035-1000

David B. Zamjahn, Kathleen E. Busch, Victoria A. Lundgren

Taking of permanent easement for right of way purposes over Parcel 3, Carver County Right of Way Plat No. ____, County State Aid Highway No. 61 (containing 0.19 acres, more or less).

Taking of temporary easement over Parcel 3, Carver County Right of Way Plat No. ____, County State Aid Highway No. 61 (containing 0.18 acres, more or less).

(Acquisition Parcel 10)
P.I.D. No. 25.035-1200

Rain, Snow or Shine Golf, LLC.

Taking of permanent easement for right of way purposes over Parcel 1, Carver County Right of Way Plat No. ____, County State Aid Highway No. 61 (containing 0.29 acres, more or less).

Taking of temporary easements over Parcel 1, Carver County Right of Way Plat No. ____, County State Aid Highway No. 61 (containing 0.36 acres, more or less and 1.71 acres more less_).

Taking of permanent easement over Parcel 1, Carver County Right of Way Plat No. ____, County State Aid Highway No. 61 (containing 0.47 acres, more or less).

(Acquisition Parcels 11 and 12)
P.I.D. No. 25.035-1700

Skip S. Cook

Taking of permanent easements for right of way purposes over Parcel 5, Carver County Right of Way Plat No. __, County State Aid Highway No. 61 (containing 0.22 acres, more or less, and 0.23 acres, more or less).

Taking of temporary easement over Parcel 5, Carver County Right of Way Plat No. ____, County State Aid Highway No. 61 (containing 0.32 acres, more or less).

(Acquisition Parcel 15)
P.I.D. No. 25.035-1300

Skip S. Cook

Taking of temporary easement over Parcel 7, Carver County Right of Way Plat No. ____, County State Aid Highway No. 61 (containing 0.35 acres, more or less).

(Acquisition Parcels 20, 22 and 25)
P.I.D. No. 25.601-0020

PCH Development, LLC

Taking of temporary easements over Parcel 8, Carver County Right of Way Plat No. ____, County State Aid Highway No. 61 (containing 0.25 acres, more or less, and 0.69 acres, more or less).

(Acquisition Parcel 34)
P.I.D. No. 25.036-2700

615 Flying Cloud Drive, LLC

Taking of temporary easement over Parcel 10, Carver County Right of Way Plat No. ____, County State Aid Highway No. 61 (containing 0.72 acres, more or less).

(Acquisition Parcel 36)
P.I.D. No. 25.036-1300

JT Investments, LLC

Taking of permanent easement for right of way purposes over Parcel 9, Carver County Right of Way Plat No. ____, County State Aid Highway No. 61 (containing 0.13 acres, more or less).

Taking of temporary easement over Parcel 9, Carver County Right of Way Plat No. ____, County State Aid Highway No. 61 (containing 0.31 acres, more or less).

Carver County Board of Commissioners Request for Board Action



Agenda Item:

Request for approval to contract with various vendors for refuse and recycling disposal.

Primary Originating Division/Dept: <input type="text" value="Administrative Services - Facilities"/>	Meeting Date: <input type="text" value="8/20/2013"/>
Contact: <input type="text" value="Kevin Maas"/> Title: <input type="text" value="Facilities Services Departmen..."/>	Item Type: <input type="text" value="Consent"/>
Amount of Time Requested: <input type="text"/> minutes Presenter: <input type="text"/> Title: <input type="text"/>	Attachments: <input checked="" type="radio"/> Yes <input type="radio"/> No

Strategic Initiative:

BACKGROUND/JUSTIFICATION:

The current contracts for refuse and recycling expire in August 2013. Staff initiated a Request for Proposal (RFP) process in June. The request for proposal was emailed to every licensed hauler of record with the Environmental Services department and posted on the County Web Page.

The RFP was essentially re-written from the previous (2010) version with the only change being the frequency of pickups and container sizes at a couple locations. The RFP requested quotes for three years; the recommended contract term.

Three licensed haulers responded to the RFP and staff is recommending that the low quotes be awarded by contract for each location listed in the RFP.

- Waste Management is low for eight locations and used a 3% annual increase. Contract amounts for Waste Management are year one \$13,779; \$14,192 and \$14,618 for a 3 year total of \$41,902.
- Republic Industries quoted low at four locations and a 1% annual increase. Republic's totals are \$10,576; 10,682; and 10,789 for 3 year total of \$32,046.
- Organic Disposal, LLC quotes are low at two locations and also used a 3% annual increase. Organic's totals are year one \$1,123; \$1,156; and \$1,190 for a 3 year total of \$3,470.

The Counties' local preference procurement policy was included with the RFP and Organic Disposal qualified for local preference in five of the six criteria but were not within 10% of the lowest bids at any location. The monthly cost bid tabulations is included for reference.

Staff is requesting two motions; one to extend the existing contracts through September 30, 2013 and one to approve all three contracts that have a three year contract value of \$77,418.

ACTION REQUESTED:

Motion to extend the existing refuse contracts through September 30, 2013 (60 days).

Motion to approve the contracts with Waste Management, Republic Industries, and Organic Disposal, LLC pending finalization of the contract review process.

FISCAL IMPACT: <input type="text" value="Included in current budget"/> If "Other", specify: <input type="text" value="total three year contracts"/>	FUNDING County Dollars = <input type="text" value="\$77,418.00"/> _____ Total <input type="text" value="\$77,418.00"/>
FTE IMPACT: <input type="text" value="None"/>	

Related Financial/FTE Comments:

Parks = \$2,343 Facilities = \$11,436 for Oct. 2013 to Oct 2014



Facilities Services
 Carver County
 600 East Fourth Street
 Chaska, MN 55318
 Telephone: 952/361-1584
 Fax: 952/361-1180

NUMBER	Carver County Solid Waste Quotes		ANNUAL COST	ANNUAL COST	ANNUAL COST
	SITES	ANNUAL COST	ORGANIC DIS	REPUBLIC	WASTE MGMT
1	Carver County Lic. Center 418 Pine Street Chaska, MN 55318	\$ -	\$ 694.00	\$ 840.00	\$ 541.00
2	Carver County Jail 606 East 4th Street Chaska, MN 55318	\$ -		\$ 3,320.00	\$ 4,581.00
3	Carver County Admin. Bldg. 600 East 4th Street Chaska, MN 55318	\$ -		\$ 7,148.00	\$ 6,854.00
4	Carver County ERMC 116 Peavey Circle Chaska, MN 55318	\$ -		\$ 5,197.00	\$ 7,297.00
5	Carver County Public Works 3700 Chaska Blvd. Chaska, MN 55318	\$ -	\$ 842.00	\$ 909.00	\$ 1,193.00
6	Chanhassen Lic. Center 7808 Kerber Blvd, Chanhassen, MN 55317	\$ -	\$ 694.00	\$ 837.00	\$ 541.00
7	Carver County Public Works 11360 Hwy 212 West, Suite 1 Cologne, MN 55322		\$ 2,886.00		\$ 1,282.00
8	Carver County Public Works 313 Territorial Street Watertown, MN 55388	\$ -			
9	Carver County Public Works 12185 Co Rd 33 NORWOOD/YA, MN 55397	\$ -	\$ 281.00		\$ 391.00
10	Carver County Mental Health 540 1st Streert E Waconia, MN 55387	\$ -		\$ 1,214.00	\$ 1,021.00
11	Carver County ENCORE 609 1st Street Waconia, MN 55387	\$ -	\$ 846.00	\$ 1,214.00	\$ 532.00
12	Carver County Historical Society 555 1st Street Waconia, MN 55387	\$ -	\$ 706.00	\$ 840.00	\$ 322.00
13	Baylor Regional Park 10775 County Road 33 Norwood young America, MN 55397		\$ 2,889.30		\$ 2,343.00
14	Lake Minnewashta Regional Park 6900 Hazeltine Blvd Chanhassen, MN 55331			\$ 1,497.00	\$ 1,556.00
15	Lake Waconia Regional Park 8170 Paradise Lane Waconia, MN 55387	\$ -		\$ 562.00	\$ 1,404.00

Carver County Board of Commissioners Request for Board Action



Agenda Item:

Request for approval to contract with Minnesota Housing Finance Agency

Primary Originating Division/Dept:

Meeting

Date:

Contact: Title:

Item Type:

Amount of Time Requested: minutes

Presenter: Title:

Attachments: Yes No

Strategic Initiative:

Communities: Create and maintain safe, healthy, and livable communities

BACKGROUND/JUSTIFICATION:

This grant is from the MN Housing Finance Agency (MHFA), through a competitive bid was awarded to the Carver / Scott Continuum of Care program. Regarding this grant, Carver County is the fiscal agent. The funds will be sent to Carver County from MHFA and in turn, Community Social Services (CSS) will distribute funds on a monthly basis to the CAP agency.

ACTION REQUESTED:

Motion to contract with Minnesota Housing Finance Agency pending finalization of the contract review process.

FISCAL IMPACT:
If "Other", specify:

FUNDING	
County Dollars =	\$332,750.00
Total	\$332,750.00

FTE IMPACT:

Related Financial/FTE Comments:

These funds will be sent to Carver County and in turn, passed through to the CAP agency who will perform the services necessary. CSS financial will make necessary transfers on a monthly basis

Office use only:
RBA 2012- 2069

Carver County Board of Commissioners Request for Board Action



Agenda Item:

Purchase of Chip Spreader for Public Works

Primary Originating Division/Dept:

Meeting Date:

Contact: Title:

Item Type:

Amount of Time Requested: minutes

Attachments: Yes No

Presenter: Title:

Strategic Initiative:

Communities: Create and maintain safe, healthy, and livable communities

BACKGROUND/JUSTIFICATION:

It has been a long standing highway maintenance practice to seal coat Carver County highways. Seal coating is a highly beneficial preventive maintenance measure that protects the asphalt roads from deteriorating due to the effects of the ultra violet rays and provides for a higher friction coefficient for vehicles traveling along Carver County roads. The current chip spreader was purchased in 1986. It has a gas engine, manual transmission and a stationary chip spread hopper of 13 feet 6 inches. As the county road system has expanded and grown wider over the years, this spreader is becoming less and less efficient for operations.

Public Works is proposing to purchase a new spreader with a diesel engine, hydrostatically driven, and able to expand out to 24 feet wide. The new machine can be operated by a single operator rather than 2 operators as the current one does.

Public Works investigated potential suppliers in the Midwest for this unit (a variable width front end unit that allows upto 24' of coverage). Public Works contacted Road Machinery, Savage, MN; Rufferidge Johnson, Minneapolis, MN; and Swanston Equipment, Fargo, ND. As this is a very unique machine, the only vendor in the Midwest region able to supply the unit is Swanston Equipment, Fargo, ND. Other vendors in the US can supply the unit, however they do not have local service options. Any specialty repairs would require shipping the unit out of state which is not cost effective. Swanston can service the unit if necessary at Public Works HQ.

Although the estimate for the unit is greater than \$100,000, which generally requires a sealed bid purchase, this is considered a sole source purchase based on the type of unit and service needs. State competitive bidding laws do not apply to sole source "noncompetitive" types and kinds of equipment. Furthermore, County policy allows purchase from a sole source if that is the only feasible and prudent option.

Swanston's quote for a Etnyre Chip Spreader is \$239,990.00 (This is a government discounted price). This cost includes warranty and training for Public Works staff at the Cologne HQ.

ACTION REQUESTED:

Approve the purchase of an Etnyre Chip Spreader from Swanston Equipment, Fargo, North Dakota for \$239,990.00

FISCAL IMPACT:
If "Other", specify:

FUNDING	
County Dollars =	\$0.00
2012 Y.E.S	\$239,990.00
Total	\$239,990.00

FTE IMPACT:

Related Financial/FTE Comments:

The County Board approved \$1,000,000 of 2012 Y.E.S. funds for Public Works Equipment

Office use only:

RBA 2012- 2059

Carver County Board of Commissioners Request for Board Action



Agenda Item:

Out of State Travel - Facilities MWIII - Siemens Apogee PPCL Programming Course Buffalo Grove, IL

Primary Originating Division/Dept:

Contact: Title:

Amount of Time Requested: minutes

Presenter: Title:

Meeting
Date:

Item Type:
Consent

Attachments: Yes No

Strategic Initiative:

Culture: Provide organizational culture fostering accountability to achieve goals & sustain public trust/confidence in County government

BACKGROUND/JUSTIFICATION:

Facilities planned to send a MWIII worker to a Siemens Apogee programming class this fall in Minneapolis based upon Siemens published training schedule. However, Siemens now says the course book for 2013 was printed in error and they are not offering any programming courses in Minneapolis.

The PPCL programming course is only offered at the Buffalo Grove, IL Training Center. Siemens Training is annually budgeted by Facilities. The course is expected to result in better operations of the software and to be able to respond more quickly to programming issues and installing/repairs. The course is at an on-site Regional office of Siemens and includes display areas and hands-on programming in a state of industry training center. Staff meets the course prerequisites.

The budget is as follows:

Course: \$1995; Travel: \$550, Lodging & Expense: \$600 total: \$3,145

Funding is available for the additional travel and lodging expenses.

ACTION REQUESTED:

Move approval of Facilities Maintenance Worker III training at the Siemens Buffalo Grove Training Facility.

FISCAL IMPACT:

If "Other", specify:

FUNDING	
County Dollars =	\$3,145.00
Total	\$3,145.00

FTE IMPACT:

Related Financial/FTE Comments:

Office use only:

RBA 2012- 2052

Carver County Board of Commissioners Request for Board Action



Agenda Item:

Out of State Travel - Microsoft CRM User Group Conference

Primary Originating Division/Dept: <input type="text" value="Administrative Services - IT"/>	Meeting Date: <input type="text" value="8/20/2013"/>
Contact: <input type="text" value="Melissa Reeder"/> Title: <input type="text" value="IT Director"/>	Item Type: <input type="text"/>
Amount of Time Requested: <input type="text"/> minutes	Consent <input type="text"/>
Presenter: <input type="text"/> Title: <input type="text"/>	Attachments: <input type="radio"/> Yes <input checked="" type="radio"/> No

Strategic Initiative:

BACKGROUND/JUSTIFICATION:

The Microsoft Customer Relationship Management User Group Summit (CRMUG) Summit 2013 is three days in October dedicated to helping increase productivity and get maximum benefits from our Microsoft Dynamics CRM implementation. Carver's Business Analyst will have a unique opportunity to network with and learn best practices from other CRM users; participate in interactive training sessions and group discussions; and get answers to our questions and solutions to our issues from other professionals who use the software every day. In addition, our Business Analyst has the opportunity to highlight the innovative ways Carver County is using CRM and GIS by leading a Business User session and participating on a panel that will focus on the best practices of user adoption.

The focus for our BA will be finding solutions or best practices in these key areas:

- Business process automation (workflows, dashboards, dialogs)
- Updates, add-ons and extensions (business intelligence, mobility, system updates)
- Governance and data integrity
- Connect with other public sector users to see how they are leveraging CRM functionality

The budget for this request will come from available IT training funds and is as follows:

Airfare and Transportation: \$500
 Hotel: \$600
 Registration Fee: \$499*
Total: \$1,599

*Note Registration fee is ordinarily \$999. However, since the County's Business Analyst will be presenting at the conference, she receives a speaker discount price of \$499.

ACTION REQUESTED:

Move approval of IT Business Analyst to attend the CRMUG conference in Florida in October, 2013.

FISCAL IMPACT: <input type="text" value="Included in current budget"/>	FUNDING
If "Other", specify: <input type="text"/>	County Dollars = <input type="text" value="\$1,599.00"/>
FTE IMPACT: <input type="text" value="None"/>	<input type="text"/>
	Total <input type="text" value="\$1,599.00"/>

Related Financial/FTE Comments:

Office use only:

RBA 2012- 2062

Carver County Board of Commissioners Request for Board Action



Agenda Item:

Abatements/Additions

Primary Originating Division/Dept:

Meeting

Date:

Contact:

Title:

Item Type:

Amount of Time Requested: minutes

Presenter: Title:

Attachments: Yes No

Strategic Initiative:

Finances: Improve the County's financial health and economic profile

BACKGROUND/JUSTIFICATION:

Abatements requested by taxpayers. See attached listing.

ACTION REQUESTED:

Recommend to approve.

FISCAL IMPACT:

If "Other", specify:

FUNDING

County Dollars =	\$200.22
-------------------------	-----------------

Other	\$443.78
-------	----------

FTE IMPACT:

Total	\$644.00
--------------	-----------------

Related Financial/FTE Comments:

Office use only:

RBA 2012- 2061



**CARVER
COUNTY**

Property Records & Taxpayer Services Division
Government Center - Administration Building
600 East 4th Street
Chaska, MN 55318-2102

Laurie Davies, Taxpayer Services Manager
Phone: (952) 361-1907
Email: lengelen@co.carver.mn.us

Angela Johnson, Carver County Assessor
Phone: (952) 361-1961
Email: ajohnson@co.carver.mn.us

**Abatements presented to the
Carver County Board of Commissioners
August 20, 2013**

**Abatement approval is recommended by the Carver County Assessor & Taxpayer Services Manager
on the following properties for the reasons listed.**

Payable Year	Parcel Number	Name	Reason for Abatement	Original Tax Amount	Adjusted Tax Amount	County Dollars Abated	Total Amount of Adjustment
2010 to 2012	30.4750010	Marie A. Lohmar	Incorrect Homestead Classification	\$2,092.00	\$2,828.00	\$226.36	\$736.00
2013	30.4750010	Marie A. Lohmar	Incorrect Homestead Classification	\$1,780.00	\$2,092.00	\$113.42	\$312.00
2013	25.2850020	John H. Benson & Krisan L. Osterby-Benson	Classification Change	\$7,304.00	\$6,940.00	-\$127.59	-\$364.00
2013	30.9510376	Roland & Pauline McAllister C/O Brandondale	Exempt	\$40.00	\$0.00	-\$11.97	-\$40.00
TOTALS				\$11,216.00	\$11,860.00	\$200.22	\$644.00

Carver County Board of Commissioners Request for Board Action

**Agenda Item:****Child Support Awareness Month**

Primary Originating Division/Dept: Community Social Services - Income Support

Meeting Date: 8/20/2013

Contact: Rod Franks

Title: Income Support Manager

Item Type:

Regular Session

Amount of Time Requested: 5 minutes

Presenter: Gary Bork

Title: CSS Director

Attachments: Yes No**Strategic Initiative:**

Communities: Create and maintain safe, healthy, and livable communities

BACKGROUND/JUSTIFICATION:

Child Support Program

The county administers a child support program whose goal is to help families work toward becoming or remaining self-sufficient through improved child support collections. By locating and working with both parents to establish and enforce support orders, the county's child support program helps children receive the financial, medical and child care support they deserve. Child support programs include:

- [Enforcement](#)
- [Establishment](#)
- [Paternity](#)

Child Support Enforcement

The purpose of this program is to enforce support obligations, collect current and past due support payments and modify existing obligations.

Services include:

- locate absent parents
- enforce the collection of financial, medical and child care support
- adjust orders given by the court based on the cost-of-living index
- work with other states to enforce support when one parent does not live in Minnesota.

Child Support Establishment

The purpose of this program is to establish a court order for financial, medical and child care support when no other type of support order exists.

Services include:

- locate non-custodial parents
- identify and verify sources of income for non-custodial parents
- establish support obligations, if appropriate.

Child Support Paternity

The purpose of the paternity program is to help persons who have a child born outside of marriage to establish a legal parent and child relationship.

Services include:

- locate alleged fathers
- coordinate genetic testing
- help parties file a Recognition of Parentage
- adjudicate paternity through the court process
- establish financial obligations for non-custodial parents.

Attached is a letter from DHS Child Support Enforcement Director, Jeffrey Jorgenson, in which he discusses the statewide accomplishments of Child Support Services.

Also attached are two charts highlighting the performance of the Carver County Child Support Team. The information is from FFY 2012. Information for FFY 2013 will be available this October. Of the 7 County metro area, Carver County is a top performer. In regards to Federal Performance Standards, the Carver County team excels and continues to improve. From FFY 2012 to the current time, Carver County has increased its Child Support collections from 77.38% to 78.71%! Our collections are 6.99% above the state average, and 1.47% above our own collections compared to last year at this time.

ACTION REQUESTED:

Recognition of Child Support Awareness Month, the Carver County Child Support Team, and the contribution the Team is making to health and welfare of children and families in Carver County.

FISCAL IMPACT: None	FUNDING
<i>If "Other", specify:</i>	County Dollars =
FTE IMPACT: None	Total
	\$0.00

Related Financial/FTE Comments:

Office use only:

RBA 2012- 2074

Child Support 2012 Federal Performance Outcomes

7 County Metro Area Relative Rankings

	Paternity Establish		Support Establish		Current Collections		Arrears Collections		Cost Effect		Avg Rank
	%	#	%	#	%	#	%	#	%	#	
Anoka	106%	2	90%	3	71%	4	71%	4	5.14	3	3.2
Carver	106%	2	92%	1	77%	2	80%	1	4.43	5	2.2
Dakota	101%	5	89%	4	69%	5	70%	5	4.54	4	4.6
Hennepin	100%	6	82%	6	66%	6	64%	6	3.25	7	6.2
Ramsey	94%	7	78%	7	62%	7	62%	7	3.57	6	6.8
Scott	109%	1	87%	5	78%	1	79%	2	5.29	2	2.2
Washington	105%	4	91%	2	73%	3	72%	3	6.83	1	2.6
Minnesota	102%		86%		71%		70%		4.50		

Paternity Establishment:

The percent of children with paternity established

Support Order Establishment:

The percent of cases with support orders established

Collections on Current Support:

The percent collected of current support due

Collections on Arrears:

The percent of cases with arrears collections

Cost Effectiveness:

Dollars collected per dollar spent on the IV-D program

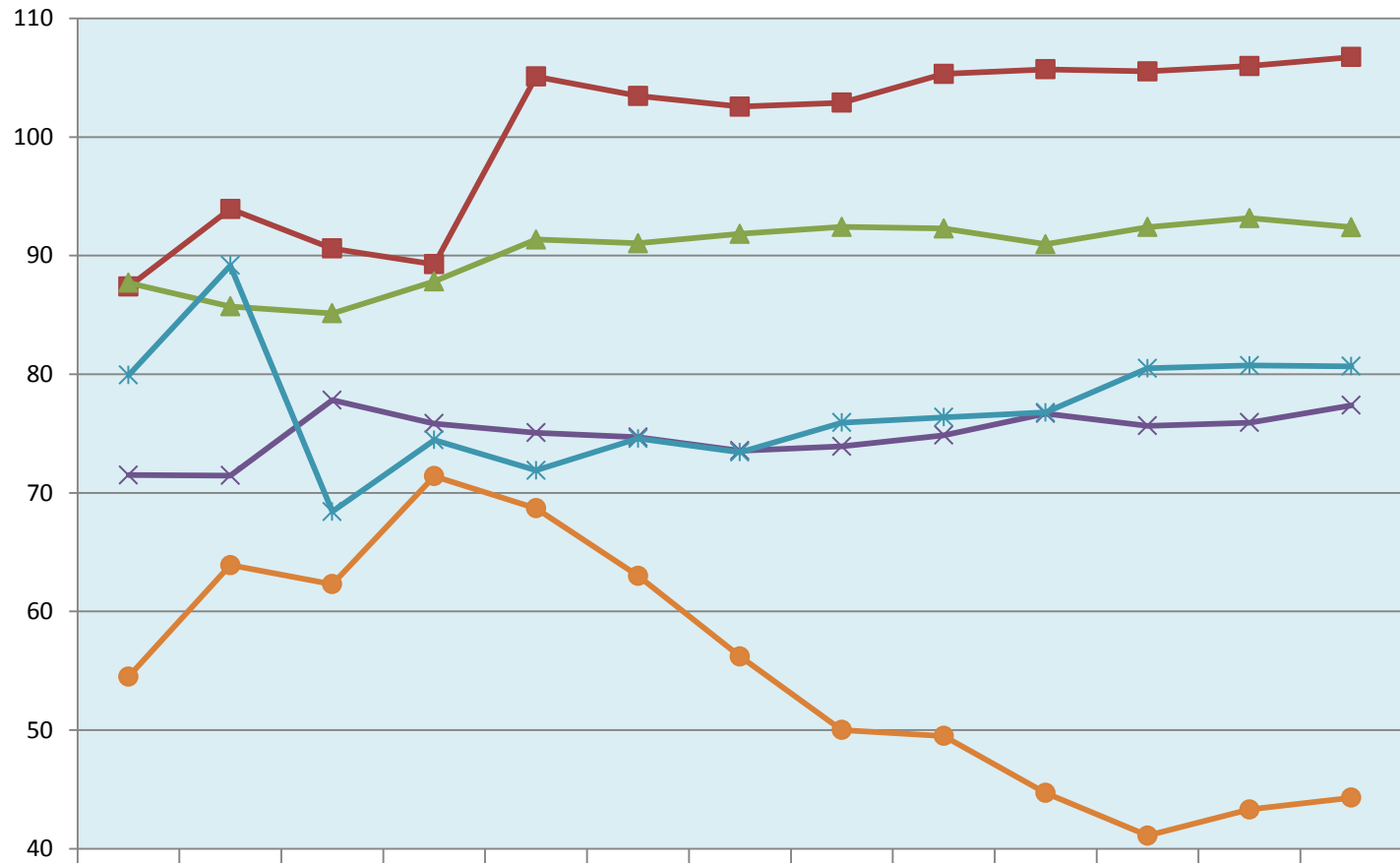
Data Source:

MN Department of Human Services
 CPAT Annual summary of Performance
 FFY2012 Performance Measures

Rankings:

Derived from data source.

Child Support Federal Performance Measures



◆ Federal Fiscal Year: Oct - Sept	2000	2001	2002	2003	2004	2005	2006	2007	2008	2009	2010	2011	2012
■ Paternity Establishment %	87.38	93.93	90.6	89.27	105.09	103.46	102.56	102.89	105.32	105.7	105.53	105.98	106.74
▲ Order Establishment %	87.7	85.71	85.13	87.82	91.36	91.03	91.83	92.42	92.28	90.96	92.41	93.16	92.39
× Current Support Collected %	71.5	71.45	77.81	75.84	75.07	74.7	73.55	73.91	74.86	76.69	75.65	75.92	77.38
* Arrears Collection %	79.92	89.16	68.41	74.45	71.89	74.58	73.42	75.92	76.37	76.78	80.49	80.73	80.67
● Cost Effectiveness Measure	54.5	63.9	62.3	71.4	68.7	63	56.2	50	49.5	44.7	41.1	43.3	44.3

Carver improved its' Current Support Collected Measure through July 2013 by 1.47% from FFY2012

August as National Child Support Awareness Month presents a wonderful opportunity to celebrate our program achievements in the last year and build momentum as we move forward. Much has happened in our program--we are in the midst of change on many levels. It is an exciting time to be working in Minnesota's child support program. Every day we are challenged to work harder and smarter to improve our service delivery for families statewide. We are on the cusp of a more efficient and effective program that integrates interactive technology, performance management tools, and vision-forward strategies.

I am particularly proud of these efforts:

- Creating a statewide policy that supports counties in their work to reduce debt and manage arrears.
- Being a partner in two federal demonstration projects, Mind the Gap and Co-parent Court, both of which show promise, are nationally recognized, and incorporate creative solutions to issues many of our participants face.
- Launching new interactive online features to improve customer service for participants and employers through Minnesota Child Support Online (MCSO).
- Eliminating barriers for workers so that case management activities are effective and resources helpful such as real time access to birth record information, more timely and reliable incarceration information, and greater participation and interaction with other health human services programs that serve the same the same families we do.
- Creating a Comprehensive Legal Vision (CLV) group which includes experts from the State, County and County Attorney Offices to address unresolved legal issues in the program.

Child support opens the door to so many possibilities for the families who receive it. Working together as partners we can strengthen and improve the services we provide to our families through the child support program. Thank you for your hard work and for your contributions to make our program better.

Sincerely,

Jeff Jorgenson
Director, Child Support Enforcement Division
MN Department of Human Services
Jeffrey.J.Jorgenson@state.mn.us
Phone: 651-431-4276

Carver County Board of Commissioners Request for Board Action



Agenda Item:

Award of Bid for SAP 010-643-012: Reconstruction of CSAH 43 Bridge #10501 over Carver Creek

Primary Originating Division/Dept: <input type="text" value="Public Works - Engineering"/>	Meeting Date: <input type="text" value="8/20/2013"/>
Contact: <input type="text" value="Scott A. Smith"/> Title: <input type="text" value="Project Engineer"/>	Item Type: <input type="text" value="Regular Session"/>
Amount of Time Requested: <input type="text" value="10"/> minutes	Attachments: <input checked="" type="radio"/> Yes <input type="radio"/> No
Presenter: <input type="text" value="Lyndon Robjert"/> Title: <input type="text" value="PW Director/County Engineer"/>	
Strategic Initiative: <input type="text" value="Communities: Create and maintain safe, healthy, and livable communities"/>	

BACKGROUND/JUSTIFICATION:

Bids for SAP 010-643-012 were opened on Thursday, August 08, 2013. The project includes the reconstruction of CSAH 43 Bridge #10501 over Carver Creek located approximately 2.4 miles south of TH 212 and 2.0 miles west of the City of Carver.

Due to road closure conflicts with the CSAH 41 Bridge project, two bid alternatives were developed.

Alternative #1 required the CSAH 43 bridge and all detours to be open to traffic by October 1, 2013 with a project completion of October 15, 2013.

Alternate Bid #2 required the CSAH 43 bridge and all detours to be open to traffic by July 4, 2014 with all construction occurring between June 2, 2014 and July 18, 2014.

The engineers estimate was \$856,265.00. Alternative #1 had one bidder in the amount of \$1,271,900.55. Alternative #2 had two bidders, of which the low bidder was Minger Construction, Inc. in the amount of \$783,722.95. (For additional information see attached bid abstracts for both Alternative Bids #1 and #2)

This project is partially funded by state bridge funds. The balance will be funded using County State Aid Highway (gas tax) funds.

ACTION REQUESTED:

Award project SAP 010-643-012, the reconstruction of CSAH 43 Bridge #10501 to Minger Construction, Inc. in the amount of \$783,722.95.

<p>FISCAL IMPACT: <input type="text" value="Included in current budget"/></p> <p>If "Other", specify: <input type="text"/></p> <p>FTE IMPACT: <input type="text" value="None"/></p>	<p>FUNDING</p> <table style="width: 100%;"> <tr> <td>County Dollars =</td> <td><input type="text"/></td> </tr> <tr> <td>State Bridge Funds</td> <td style="text-align: right;">\$554,335.00</td> </tr> <tr> <td>CSAH (gas tax)</td> <td style="text-align: right;">\$229,387.95</td> </tr> <tr> <td>Total</td> <td style="text-align: right;">\$783,722.95</td> </tr> </table>	County Dollars =	<input type="text"/>	State Bridge Funds	\$554,335.00	CSAH (gas tax)	\$229,387.95	Total	\$783,722.95
County Dollars =	<input type="text"/>								
State Bridge Funds	\$554,335.00								
CSAH (gas tax)	\$229,387.95								
Total	\$783,722.95								

Related Financial/FTE Comments:

Office use only:

RBA 2012- 2065



**CCHD
Project Bid Abstract**

ALTERNATE #1- CSAH 43

Project Name: Bridge and Approaches over Carver Creek Contract No.:

Client: CARVER COUNTY
Bid Opening: 08/08/2013 2:00 PM

Project No.: SAP 010-643-012
Owner: CARVER COUNTY

Project: SAP 010-643-012 - ALTERNATE #1- CSAH 43 Bridge and Approaches over Carver Creek			Engineers Estimate				Minger Construction Inc.	
Item No.	Item	Units	Quantity	Unit Price	Total Price	Unit Price	Total Price	
1	2021.501 MOBILIZATION	LS	1	\$41,500.00	\$41,500.00	\$38,825.00	\$38,825.00	
2	2101.511 CLEARING AND GRUBBING	LS	1	\$6,300.00	\$6,300.00	\$3,335.00	\$3,335.00	
3	2104.501 REMOVE FENCE	L F	1324	\$2.00	\$2,648.00	\$1.55	\$2,052.20	
4	2104.505 REMOVE BITUMINOUS PAVEMENT	S Y	1631	\$2.70	\$4,403.70	\$3.70	\$6,034.70	
5	2104.513 SAWING BIT PAVEMENT (FULL DEPTH)	L F	60	\$6.00	\$360.00	\$9.45	\$567.00	
6	2104.523 SALVAGE MAIL BOX SUPPORT	EACH	1	\$55.00	\$55.00	\$115.00	\$115.00	
7	2105.501 COMMON EXCAVATION	C Y	1300	\$5.75	\$7,475.00	\$7.65	\$9,945.00	
8	2105.522 SELECT GRANULAR BORROW (CV)	C Y	1893	\$18.00	\$34,074.00	\$16.00	\$30,288.00	
9	2105.522 SELECT GRANULAR BORROW MOD 10% (CV)	C Y	5664	\$17.50	\$99,120.00	\$16.00	\$90,624.00	
10	2105.523 COMMON BORROW (LV)	C Y	3250	\$8.85	\$28,762.50	\$10.80	\$35,100.00	
11	2211.501 AGGREGATE BASE CLASS 5	TON	983	\$14.00	\$13,762.00	\$21.35	\$20,987.05	
12	2221.501 AGGREGATE SHOULDERING CLASS 3	TON	230	\$16.00	\$3,680.00	\$26.85	\$6,175.50	
13	2360.501 TYPE SP 12.5 WEARING COURSE MIX (2,C)	TON	351	\$81.00	\$28,431.00	\$173.60	\$60,933.60	
14	2360.502 TYPE SP 12.5 NON WEAR COURSE MIX (2,B)	TON	234	\$75.00	\$17,550.00	\$135.75	\$31,765.50	
15	2412.511 16X10 PRECAST CONCRETE BOX CULVERT	LN FT	208	\$1,880.00	\$391,040.00	\$3,175.00	\$660,400.00	
16	2412.511 16X10 PRECAST CONC BOX CULVERT END SECTIONS	EACH	4	\$19,890.00	\$79,560.00	\$50,000.00	\$200,000.00	
17	2442.501 REMOVE EXISTING BRIDGE	LS	1	\$19,000.00	\$19,000.00	\$7,500.00	\$7,500.00	
18	2451.509 AGGREGATE BEDDING (CV)	C Y	449	\$25.00	\$11,225.00	\$36.70	\$16,478.30	
19	2511.501 RANDOM RIPRAP CLASS III	C Y	304	\$60.00	\$18,240.00	\$82.65	\$25,125.60	
20	2511.515 GEOTEXTILE FILTER TYPE IV (MOD)	S Y	528	\$2.50	\$1,320.00	\$1.95	\$1,029.60	
21	2540.602 INSTALL MAIL BOX SUPPORT	EACH	1	\$90.00	\$90.00	\$135.00	\$135.00	
22	2557.501 WIRE FENCE DESIGN SPECIAL	L F	557	\$13.00	\$7,241.00	\$3.35	\$1,865.95	
23	2557.603 BARBED WIRE FENCE	L F	787	\$12.50	\$9,837.50	\$5.55	\$4,367.85	
24	2563.601 TRAFFIC CONTROL	LS	1	\$13,500.00	\$13,500.00	\$5,350.00	\$5,350.00	
25	2573.502 SILT FENCE, TYPE MACHINE SLICED	L F	1650	\$1.90	\$3,135.00	\$1.55	\$2,557.50	
26	2573.505 FLOTATION SILT CURTAIN TYPE MOVING WATER	L F	100	\$16.00	\$1,600.00	\$17.25	\$1,725.00	
27	2573.512 TEMPORARY DITCH CHECK TYPE 2	L F	182	\$12.00	\$2,184.00	\$3.55	\$646.10	
28	2575.572 RAPID STABILIZATION METHOD 4	S Y	5498	\$1.85	\$10,171.30	\$1.45	\$7,972.10	
Totals for Project SAP 010-643-012						\$856,265.00	\$1,271,900.55	
% of Estimate for Project SAP 010-643-012							48.54%	

I hereby certify that this is an exact reproduction of bids received.

Certified By: _____ License No. _____
Date: _____



**CCHD
Project Bid Abstract**

ALTERNATE #2- CSAH 43

Project Name: **Bridge and Approaches over
Carver Creek**

Contract No.:

Client: **CARVER COUNTY**

Project No.: **SAP 010-643-012**

Bid Opening: **08/08/2013 2:00 PM**

Owner: **CARVER COUNTY**

Project: SAP 010-643-012 - ALTERNATE #2- CSAH 43 Bridge and Approaches over Carver Creek			Engineers Estimate		Minger Construction Inc.		Midwest Contracting, LLC			
Item No.	Item	Units	Quantity	Unit Price	Total Price	Unit Price	Total Price	Unit Price	Total Price	
1	2021.501	MOBILIZATION	LS	1	\$41,500.00	\$41,500.00	\$38,825.00	\$38,825.00	\$48,000.00	\$48,000.00
2	2101.511	CLEARING AND GRUBBING	LS	1	\$6,300.00	\$6,300.00	\$3,335.00	\$3,335.00	\$2,500.00	\$2,500.00
3	2104.501	REMOVE FENCE	L F	1324	\$2.00	\$2,648.00	\$1.55	\$2,052.20	\$1.00	\$1,324.00
4	2104.505	REMOVE BITUMINOUS PAVEMENT	S Y	1631	\$2.70	\$4,403.70	\$3.70	\$6,034.70	\$4.00	\$6,524.00
5	2104.513	SAWING BIT PAVEMENT (FULL DEPTH)	L F	60	\$6.00	\$360.00	\$9.45	\$567.00	\$5.00	\$300.00
6	2104.523	SALVAGE MAIL BOX SUPPORT	EACH	1	\$55.00	\$55.00	\$115.00	\$115.00	\$75.00	\$75.00
7	2105.501	COMMON EXCAVATION	C Y	1300	\$5.75	\$7,475.00	\$7.65	\$9,945.00	\$4.00	\$5,200.00
8	2105.522	SELECT GRANULAR BORROW (CV)	C Y	1893	\$18.00	\$34,074.00	\$16.00	\$30,288.00	\$19.00	\$35,967.00
9	2105.522	SELECT GRANULAR BORROW MOD 10% (CV)	C Y	5664	\$17.50	\$99,120.00	\$16.00	\$90,624.00	\$19.00	\$107,616.00
10	2105.523	COMMON BORROW (LV)	C Y	3250	\$8.85	\$28,762.50	\$10.80	\$35,100.00	\$10.00	\$32,500.00
11	2211.501	AGGREGATE BASE CLASS 5	TON	983	\$14.00	\$13,762.00	\$21.35	\$20,987.05	\$19.00	\$18,677.00
12	2221.501	AGGREGATE SHOULDERING CLASS 3	TON	230	\$16.00	\$3,680.00	\$26.85	\$6,175.50	\$15.00	\$3,450.00
13	2360.501	TYPE SP 12.5 WEARING COURSE MIX (2,C)	TON	351	\$81.00	\$28,431.00	\$173.60	\$60,933.60	\$160.00	\$56,160.00
14	2360.502	TYPE SP 12.5 NON WEAR COURSE MIX (2,B)	TON	234	\$75.00	\$17,550.00	\$135.75	\$31,765.50	\$125.00	\$29,250.00
15	2412.511	16X10 PRECAST CONCRETE BOX CULVERT	LN FT	208	\$1,880.00	\$391,040.00	\$1,380.30	\$287,102.40	\$1,990.00	\$413,920.00
16	2412.511	16X10 PRECAST CONC BOX CULVERT END SECTIONS	EACH	4	\$19,890.00	\$79,560.00	\$21,280.00	\$85,120.00	\$30,000.00	\$120,000.00
17	2442.501	REMOVE EXISTING BRIDGE	LS	1	\$19,000.00	\$19,000.00	\$7,500.00	\$7,500.00	\$20,000.00	\$20,000.00
18	2451.509	AGGREGATE BEDDING (CV)	C Y	449	\$25.00	\$11,225.00	\$36.70	\$16,478.30	\$50.00	\$22,450.00
19	2511.501	RANDOM RIPRAP CLASS III	C Y	304	\$60.00	\$18,240.00	\$82.65	\$25,125.60	\$81.00	\$24,624.00
20	2511.515	GEOTEXTILE FILTER TYPE IV (MOD)	S Y	528	\$2.50	\$1,320.00	\$1.95	\$1,029.60	\$3.00	\$1,584.00
21	2540.602	INSTALL MAIL BOX SUPPORT	EACH	1	\$90.00	\$90.00	\$135.00	\$135.00	\$75.00	\$75.00
22	2557.501	WIRE FENCE DESIGN SPECIAL	L F	557	\$13.00	\$7,241.00	\$3.35	\$1,865.95	\$4.00	\$2,228.00
23	2557.603	BARBED WIRE FENCE	L F	787	\$12.50	\$9,837.50	\$5.55	\$4,367.85	\$4.00	\$3,148.00
24	2563.601	TRAFFIC CONTROL	LS	1	\$13,500.00	\$13,500.00	\$5,350.00	\$5,350.00	\$6,000.00	\$6,000.00
25	2573.502	SILT FENCE, TYPE MACHINE SLICED	L F	1650	\$1.90	\$3,135.00	\$1.55	\$2,557.50	\$1.50	\$2,475.00
26	2573.505	FLOTATION SILT CURTAIN TYPE MOVING WATER	L F	100	\$16.00	\$1,600.00	\$17.25	\$1,725.00	\$20.00	\$2,000.00
27	2573.512	TEMPORARY DITCH CHECK TYPE 2	L F	182	\$12.00	\$2,184.00	\$3.55	\$646.10	\$4.00	\$728.00
28	2575.572	RAPID STABILIZATION METHOD 4	S Y	5498	\$1.85	\$10,171.30	\$1.45	\$7,972.10	\$2.00	\$10,996.00
Totals for Project SAP 010-643-012						\$856,265.00		\$783,722.95		\$977,771.00
% of Estimate for Project SAP 010-643-012								-8.47%		14.19%

I hereby certify that this is an exact reproduction of bids received.

Certified By: _____ License No. _____

Date: _____

Carver County Board of Commissioners Request for Board Action



Agenda Item:

Approve the Creation of a Case Management Associate Position Series

Primary Originating Division/Dept: <input type="text" value="Community Social Services - Behavior Health"/>	Meeting Date: <input type="text" value="8/20/2013"/>
Contact: <input type="text" value="Gary Bork"/> Title: <input type="text" value="Director"/>	Item Type: <input type="text" value="Regular Session"/>
Amount of Time Requested: <input type="text" value="5"/> minutes Presenter: <input type="text" value="Gary Bork"/> Title: <input type="text" value="Director"/>	Attachments: <input type="radio"/> Yes <input checked="" type="radio"/> No
Strategic Initiative: <input type="text" value="Finances: Improve the County's financial health and economic profile"/>	

BACKGROUND/JUSTIFICATION:

The Division has a .88 FTE Case Aide assigned to the Community Support Program. The former Supervisor Chad Bacon researched the rules and regulations and devised a way to use the Case Aide to perform case management functions and be eligible to collect Targeted Case Management. This required training, work with the serious and persistently mentally ill clients and supervision pursuant to MS 245.462 subd. 4 (g). With Chad's untimely death this initiative went unnoticed until the incumbent Case Aide brought it to our attention. The incumbent had fulfilled the requirements of the DHS rule and was collecting Targeted Case Management. The position was reviewed by the Division and it was clear that the position was performing duties not normally associated with a Case Aide. A new job description was created and sent to Bjorklund and Associates for review. The review placed the position in Pay Grade 11 as compared to Pay Grade 9 for a Case Aide. This is halfway between a Case Aide and Social Worker II, and the position works under the Direction of a case manager (Social Worker II) or case manager supervisor (Community Support Supervisor).

The Division is proposing that a new two tier classification be approved. The Case Management Associate I would be the entry level position at Pay Grade 9. A person would start at this position and complete the training and experience requirements. At the point the staff person meets the requirements the person would move to a Case Management Associate II. At that time, the Case Management Associate II would be able to claim Targeted Case Management under supervision.

ACTION REQUESTED:

- To approve deletion of a .875 FTE (35 hours per week) Case Aide.
- To approve creation of a .875 FTE Case Management Associate I and the promotional series to a Case Management Associate II.
- To appoint the incumbent Barb Wachman to the Case Management Associate II.

FISCAL IMPACT: <input type="text" value="None"/> If "Other", specify: <input type="text"/>	FUNDING County Dollars = <input type="text" value="\$0.00"/>
FTE IMPACT: <input type="text" value="None"/>	Total <input type="text" value="\$0.00"/>

Related Financial/FTE Comments:

The difference between Pay Grade 9 and Pay Grade 11 is \$3.56 per hour at 100% of the Grade. The incumbent is currently at the top of Pay Grade 9. When a staff person is eligible to move from the Case Management Associate I to II they are also eligible to claim Adult Mental Health Targeted Case Management. The 2013/2014 rate is \$677 per month per client. The increase in revenue will more than offset the increase in salary.

Carver County Board of Commissioners Request for Board Action



Agenda Item:

Approve Creation of a Recreation Therapist for the Encore Program

Primary Originating Division/Dept: <input type="text" value="Community Social Services - Behavior Health"/>	Meeting Date: <input type="text" value="8/20/2013"/>
Contact: <input type="text" value="Gary Bork"/> Title: <input type="text" value="Director"/>	Item Type: <input type="text" value="Regular Session"/>
Amount of Time Requested: <input type="text" value="5"/> minutes	Attachments: <input type="radio"/> Yes <input checked="" type="radio"/> No
Presenter: <input type="text" value="Gary Bork"/> Title: <input type="text" value="Director"/>	

Strategic Initiative:

Culture: Provide organizational culture fostering accountability to achieve goals & sustain public trust/confidence in County government

BACKGROUND/JUSTIFICATION:

On June 18, 2013 the Board approved a staffing change to the Encore Program. The change recommended by the Division was based too heavily on the fiscal impact and did not give enough consideration to the programmatic side. The Division has reviewed the type of staffing with Encore staff and is requesting some additional changes to balance the programmatic issues raised by staff.

Historically, the Encore Program has been staffed by a part-time social worker, recreation therapist and program assistants. The previous recommendation deleted the Program Coordinator who was the recreation therapist and added an additional Program Assistant. The recreation therapist ensures that the daily programming meets social and physical needs of the participants being served. The program has had a person with the recreation therapist background since this author can remember. One of our Program Assistant's does have a Recreational Therapy degree and it would not be appropriate to utilize her skills in a lower grade position.

The Division is requesting that a 1.0 FTE Program Assistant position be deleted and a 1.0 FTE Recreation Therapist be created. Staffing at Encore would be as follows:

- 0.8 FTE Social Worker II (Pay Grade 13)
- 1.0 FTE Recreation Therapist (Pay Grade 11)
- 2.0 FTE Program Assistant (Pay Grade 6)

ACTION REQUESTED:

To delete 1.0 FTE Program Assistant.

To create 1.0 FTE Recreation Therapist.

FISCAL IMPACT: <input type="text" value="None"/>	FUNDING
<i>If "Other", specify:</i> <input type="text"/>	County Dollars = <input type="text"/>
FTE IMPACT: <input type="text" value="None"/>	United Way/Fees, etc. <input type="text" value="\$256,91"/>
	Total <input type="text" value="\$256,91"/>

Related Financial/FTE Comments:

The annual cost of the staffing approved by the Board on June 18 was \$251,941 and the projected cost of the above staffing pattern is \$256,918. For CY2012 Encore had revenues over expenditures of approximately \$12,000.

Prior to the Program Coordinator (Pay Grade 12) the Division did have a Recreation Therapist (Pay Grade 11).

Office use only:

RBA 2012- 2070

Carver County Board of Commissioners Request for Board Action



Agenda Item:

Approve Utility Easement Agreement in U.P. Railroad Corridor with City of Chaska

Primary Originating Division/Dept:

Meeting Date:

Contact: Title:

Item Type:

Amount of Time Requested: minutes

Attachments: Yes No

Presenter: Title:

Strategic Initiative:

Connections: Develop strong public partnerships and connect people to services and information

BACKGROUND/JUSTIFICATION:

On May 3rd, 2011 the County Board signed the Donation and Purchase and Sale Agreement with Union Pacific Railroad for the Chaska Industrial Lead. This is a 5 mile stretch of railroad corridor extending from United Sugars in Chaska, across the Minnesota River at Carver and south into Scott County. Union Pacific Railroad executed the agreement on August 9th, 2011.

For information purposes, the following outlines agency participation and interest in the corridor:

- Metropolitan Council, Park Acquisition Opportunity Funds (Regional Trail) \$1,096,988
- Metropolitan Council Environmental Services (Utility Easement) \$250,000
- Scott County Regional Railroad Authority (Corridor Preservation) \$404,006
- Carver County Regional Railroad Authority (Trail, Co. Rd 61 ROW, Corridor Preservation) \$404,006
- City of Chaska (Utility Easement/Agreement) \$130,000
- City of Carver (Levee Easement /Agreement) \$65,000

Total = 2,350,000

This agreement is with the City of Chaska to allow electric utility in the corridor.

ACTION REQUESTED:

Approve a utility easement agreement in the Union Pacific Railroad corridor with the City of Chaska and authorize board chair to sign.

FISCAL IMPACT:

If "Other", specify:

FUNDING

County Dollars =

City of Chaska

FTE IMPACT:

Total

Related Financial/FTE Comments:

\$130,000.00 to be paid to Carver County for the easement in the Union Pacific Railroad Corridor. This will reimburse the Park Acquisition Fund.

Office use only:

RBA 2012- 2044

Carver County Board of Commissioners Request for Board Action



Agenda Item:

Future CSAH 92 property Acquisition opportunity

Primary Originating Division/Dept: <input type="text" value="Public Works - Engineering"/>	Meeting Date: <input type="text" value="8/20/2013"/>
Contact: <input type="text" value="Lyndon Robjent"/> Title: <input type="text" value="PW Director/County Engineer"/>	Item Type: <input type="text" value="Closed Session"/>
Amount of Time Requested: <input type="text" value="20"/> minutes Presenter: <input type="text" value="Lyndon Robjent"/> Title: <input type="text" value="PW Director/County Engineer"/>	Attachments: <input type="radio"/> Yes <input checked="" type="radio"/> No
Strategic Initiative: <input type="text" value="Growth: Manage the challenges and opportunities resulting from growth and development"/>	

BACKGROUND/JUSTIFICATION:

A property located along what is planned as the future CSAH 92 roadway corridor is for sale. The property owner's sale representative has approached Carver County Public Works about potential purchase of this property by the County. An offer to purchase has been received.

ACTION REQUESTED:

Motion to enter into closed session according to Minnesota Statutes Section 13D.05 in order to discuss confidential land acquisition data.

FISCAL IMPACT: <input type="text" value="None"/> If "Other", specify: <input type="text"/>	FUNDING County Dollars = <input type="text"/> <input type="text"/> Total <input type="text" value="\$0.00"/>
FTE IMPACT: <input type="text" value="None"/>	

Related Financial/FTE Comments:

Office use only:

RBA 2012- 2064