

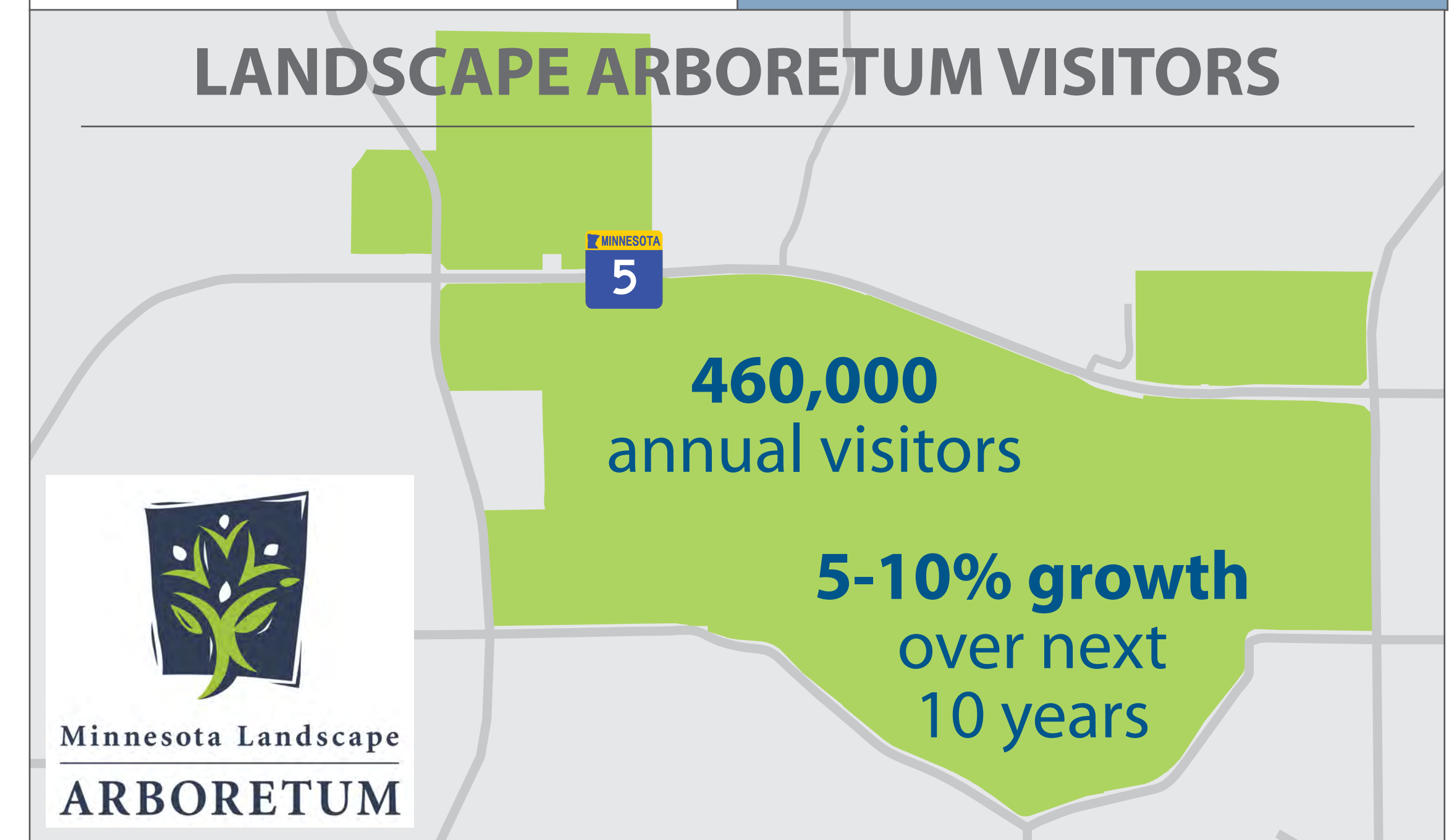
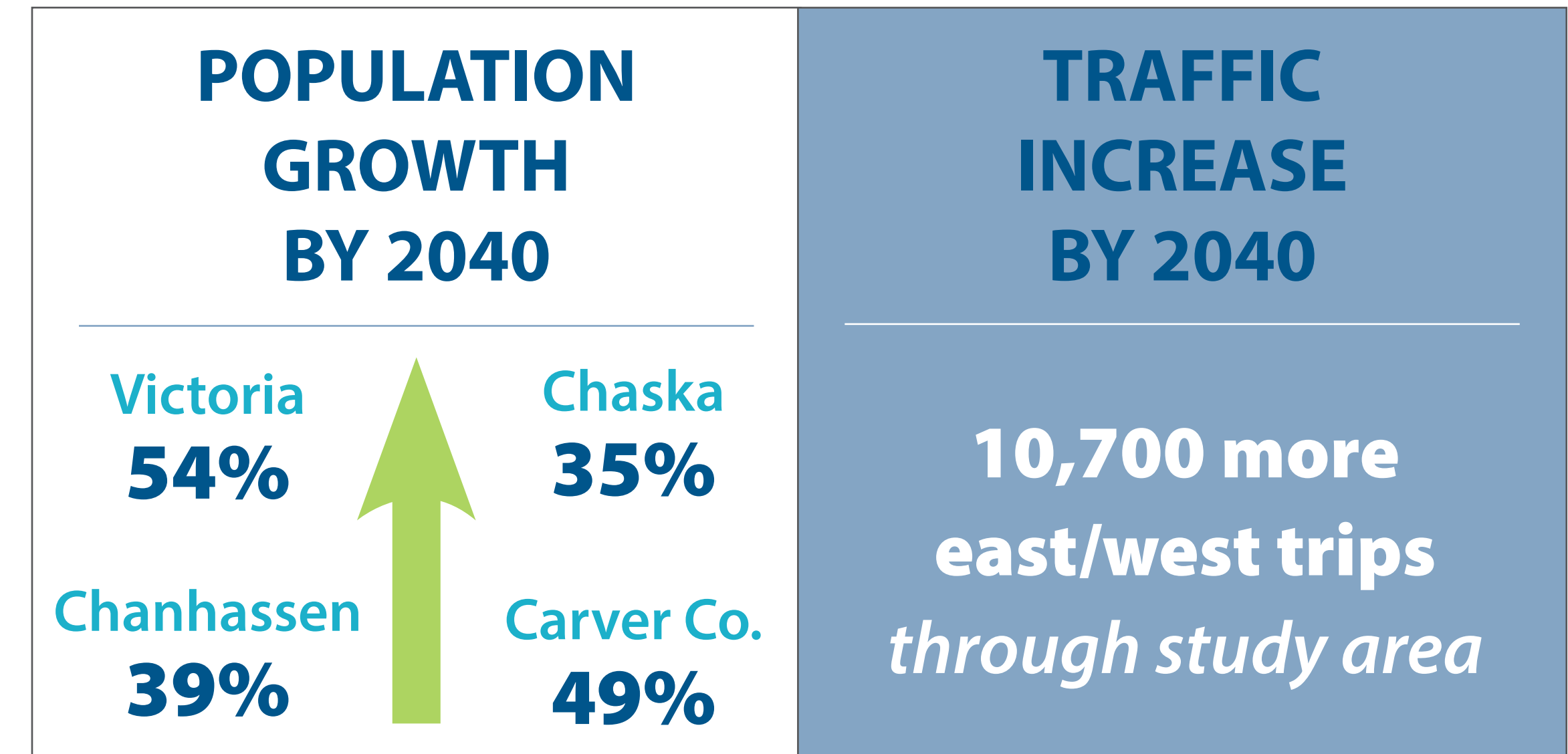
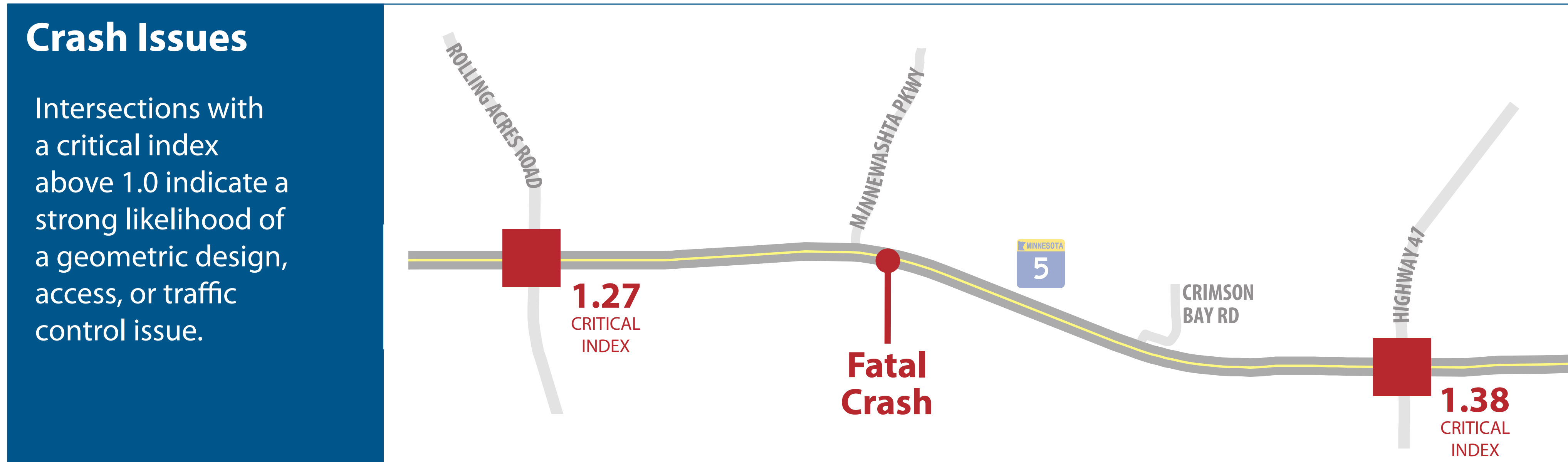
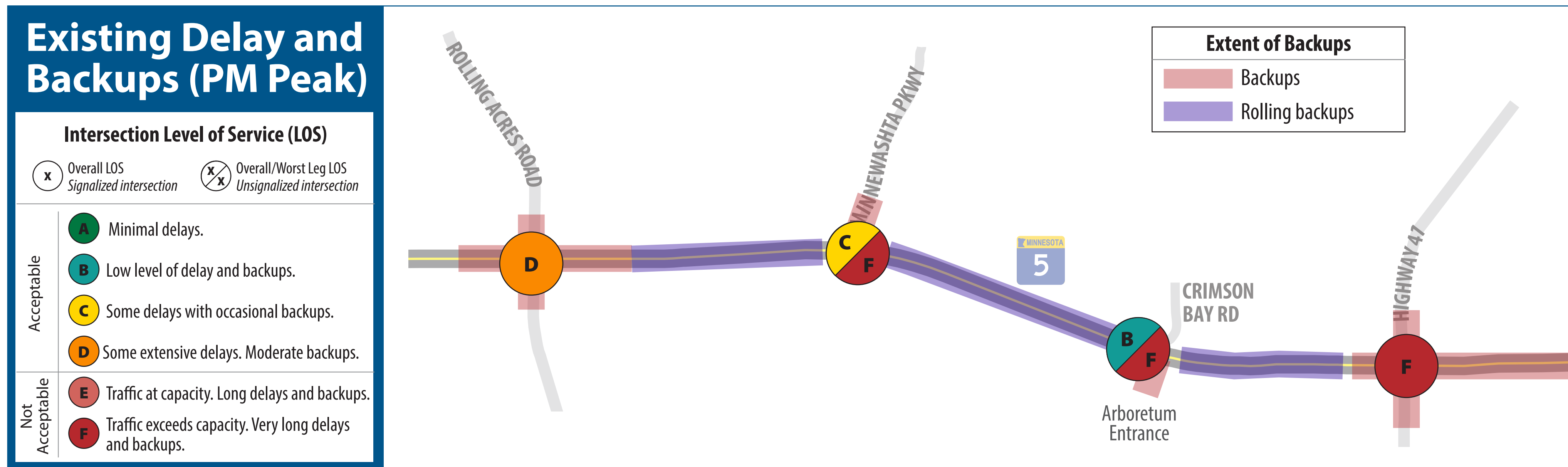
Highway 5 Board Set:

- **Hwy 5 Improvement Needs**
- **What We've Heard**
- **Design Considerations**
- **Evaluation of Concepts**
- **Concepts for these intersections:**
 - » **Hwy 5 and Rolling Acres Road**
 - » **Hwy 5 and Minnewashta Parkway/Relocated Arboretum Access**
 - » **Hwy 5 and Crimson Bay Road/Arboretum Drive**
 - » **Hwy 5 and Hwy 41**
- **What is a Displaced Left Turn Intersection?**



Highway 5 Improvement Needs

Highway 5 is an A Minor Arterial roadway that connects neighborhoods, cities, job centers, and regional destinations. Its primary purpose is to move traffic safely and efficiently.

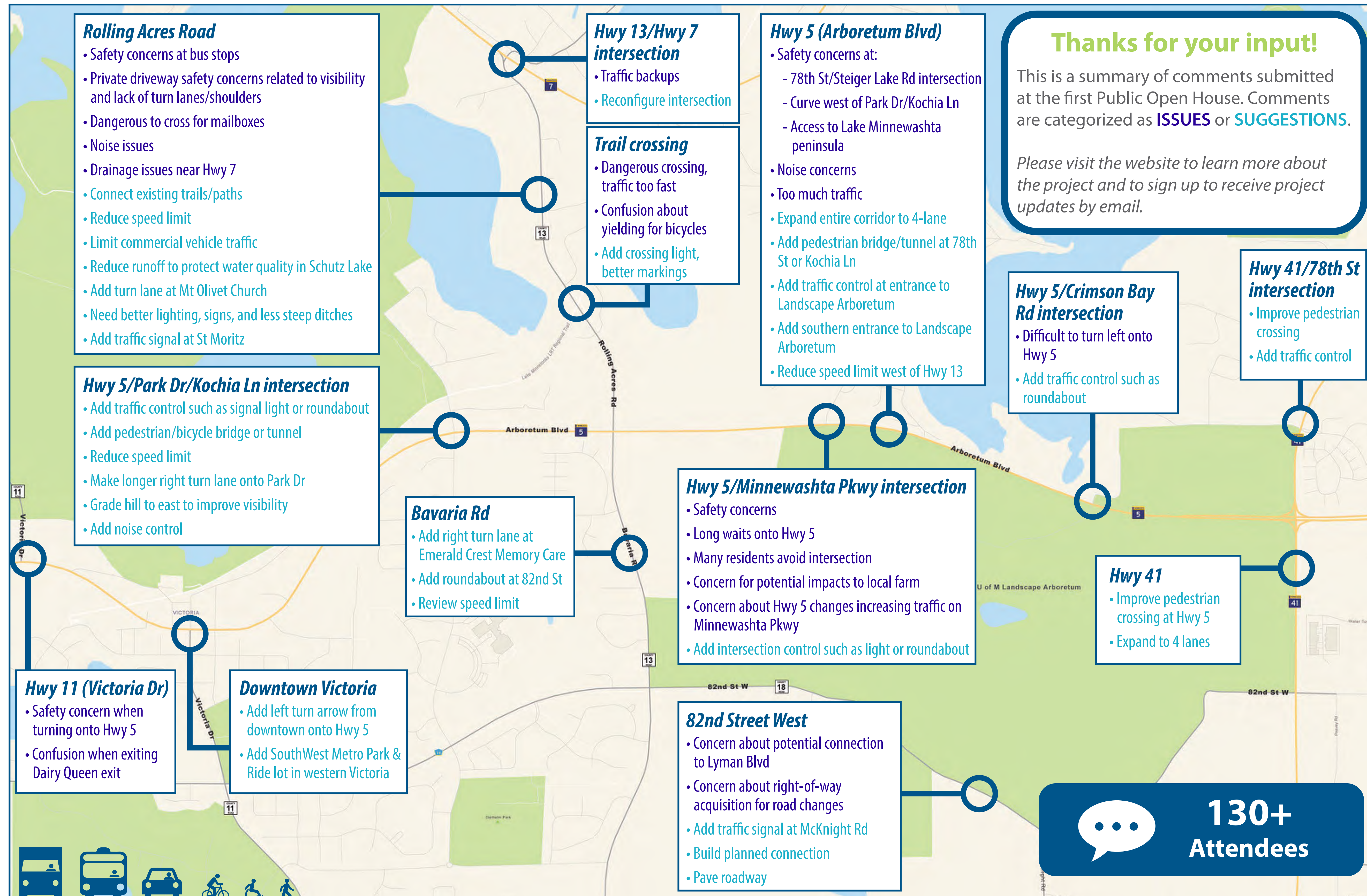


PROPOSED 4-LANE EXPANSION

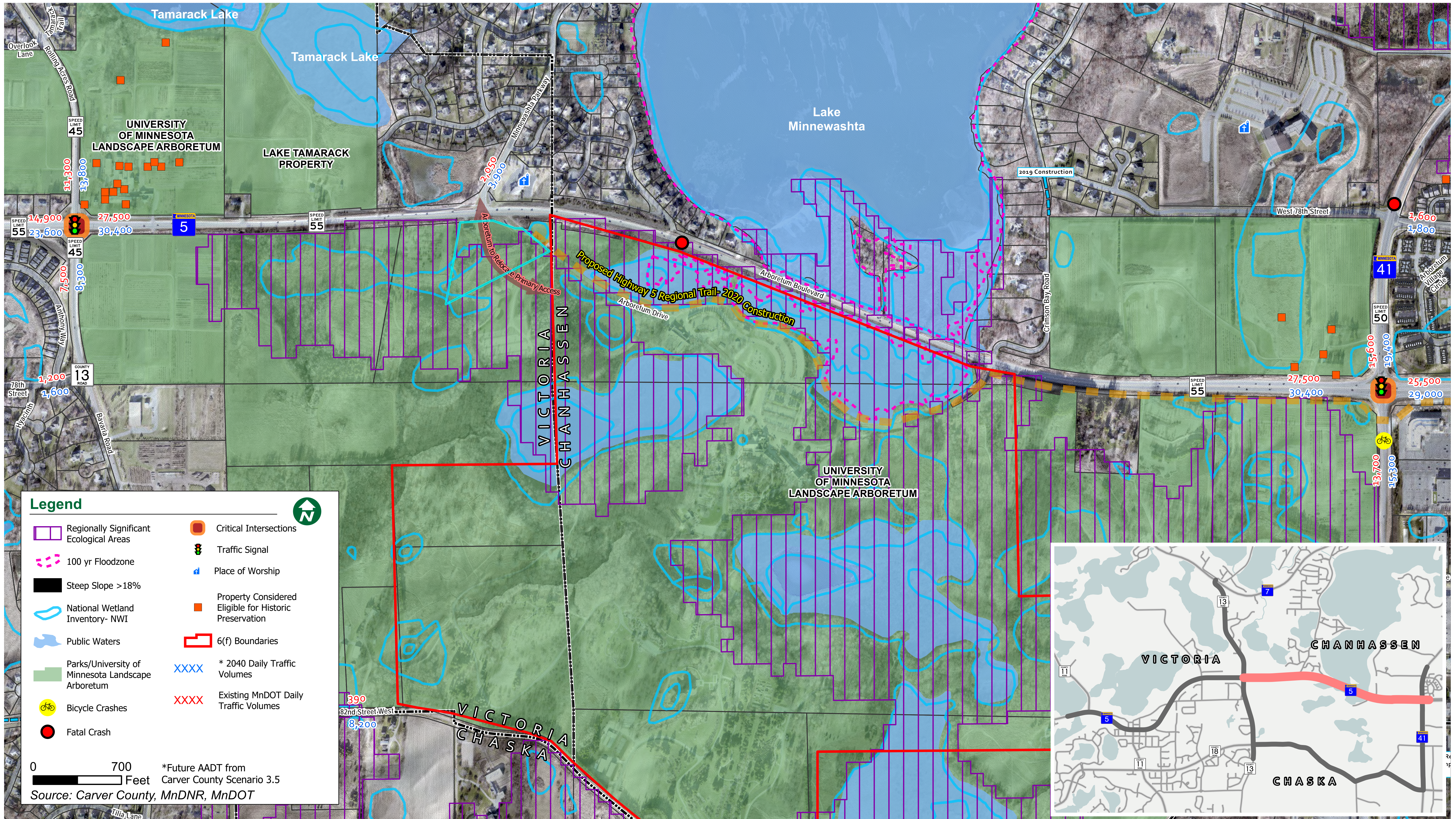
Expanding to 4-lanes would reduce delay by 70-80% for 2040 predicted traffic volumes.

What We've Heard

**Public Open House
July 16, 2019**



Design Considerations: Highway 5 East



Evaluation of Concepts

Improvement concepts were rated based on how well they met project goals. Overall scores help determine which concept best supports the project's vision.

We want to hear from you!

Review the concepts and let us know which you can support.

Look for the "What do you think?" symbol on the informational boards and fill out an **input form**.



Project Goals

- Vehicle Mobility**
 Provide efficient and reliable vehicle mobility.
- User Safety**
 Safely accommodate all system users.
- Support Multimodal Network**
 Provide a comprehensive network for pedestrians and bicyclists.
- Respect the Environment**
 Provide infrastructure improvements that respect the environment.
- Financial Responsibility**
 Develop a financially responsible implementation plan.

KEY TO SCORES

OVERALL SCORE	OVERALL SCORE	OVERALL SCORE	OVERALL SCORE
Does not meet measure	Minimally meets measure	Meets measure	Exceeds measure

Example of Concept Scorecard

		OVERALL SCORE
	Vehicle Mobility	++
	User Safety	+
	Support Multimodal Network	++
	Respect the Environment	+
	Financial Responsibility	+

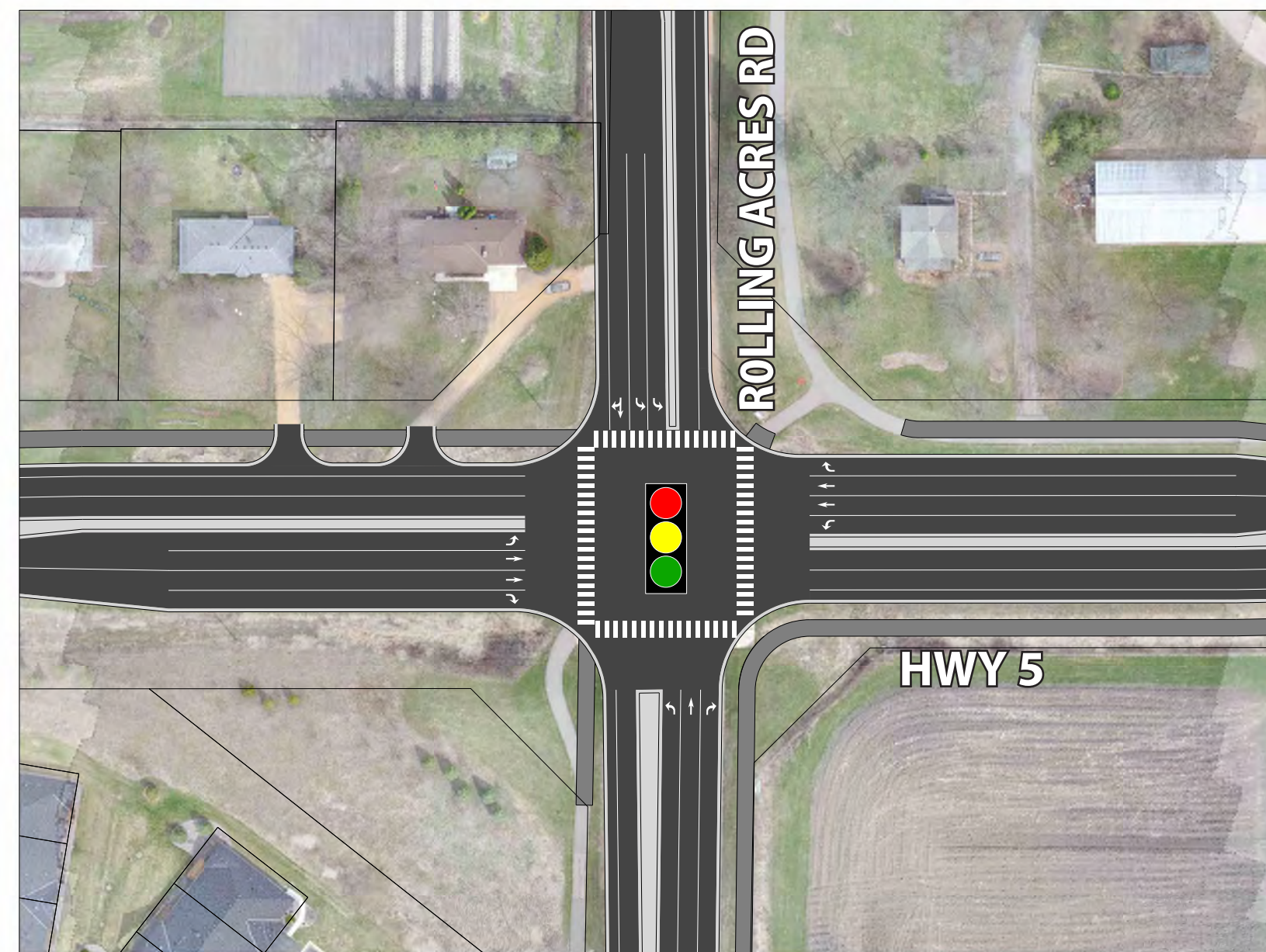
What do you think?

Highway 5 and Rolling Acres Road

KEY TO SCORES

- Does not meet measure
- Minimally meets measure
- Meets measure
- Exceeds measure

Concept 1: Signalized Full Access

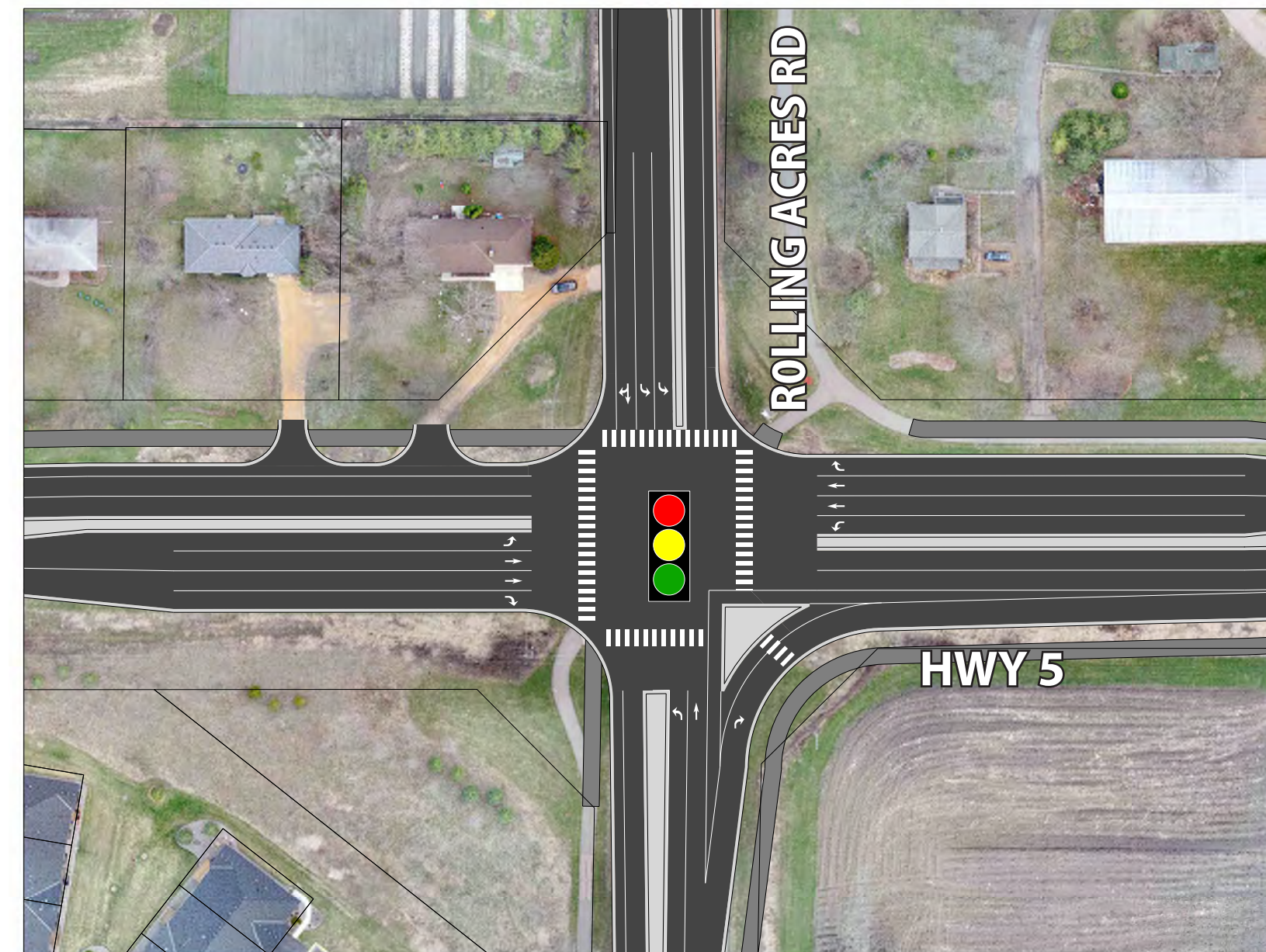


OVERALL SCORE
++

Scorecard

	Vehicle Mobility	++
	User Safety	+
	Support Multimodal Network	++
	Respect the Environment	+
	Financial Responsibility	++

Concept 2: Signalized Full Access - Northbound to Eastbound Acceleration Lane

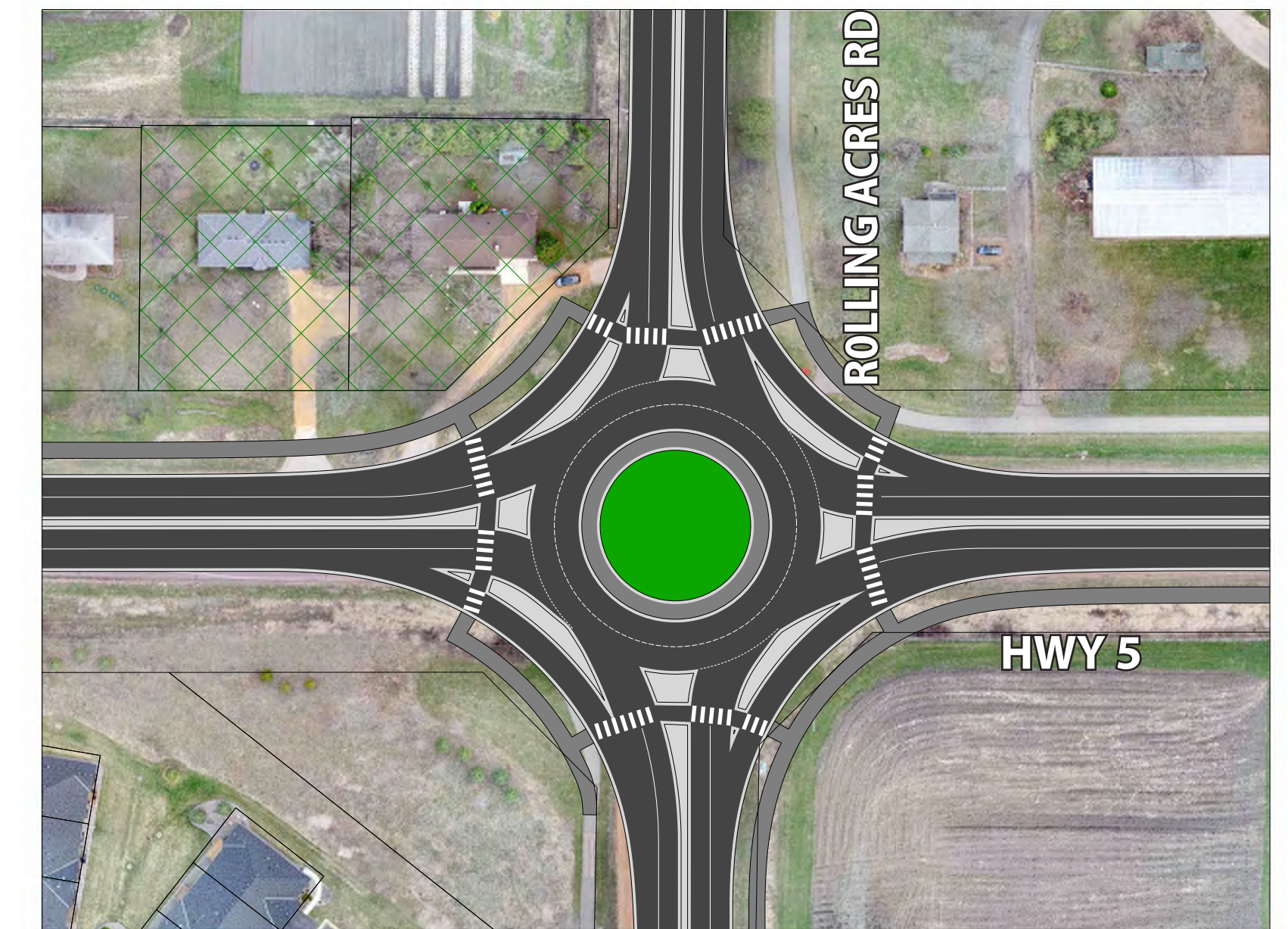


OVERALL SCORE
+

Scorecard

	Vehicle Mobility	++
	User Safety	+
	Support Multimodal Network	+
	Respect the Environment	+
	Financial Responsibility	++

Concept 3: Two-Lane Roundabout with Right-Turn Bypass



OVERALL SCORE
0

Scorecard

	Vehicle Mobility	0
	User Safety	0
	Support Multimodal Network	-
	Respect the Environment	0
	Financial Responsibility	0

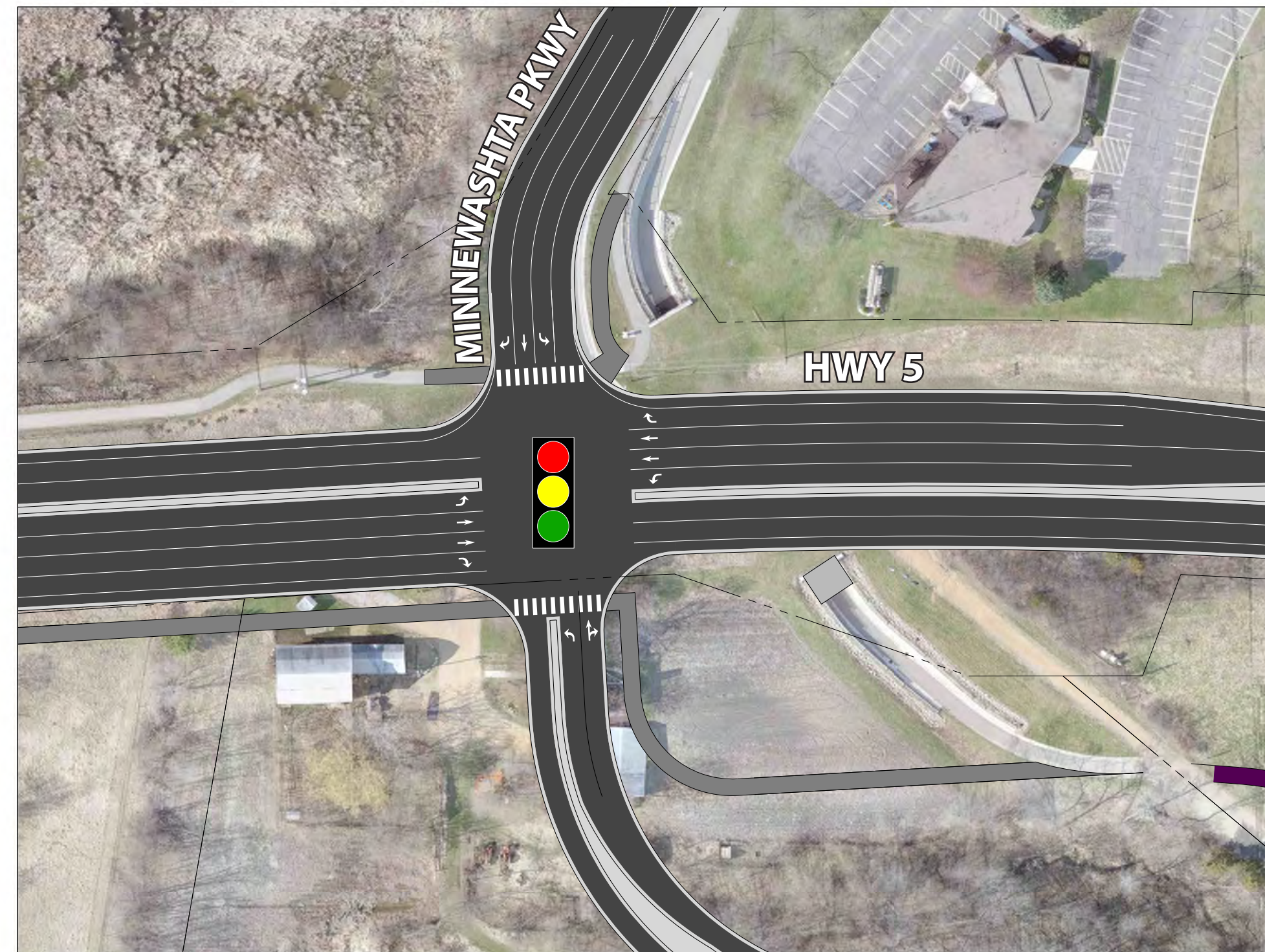
What do you think?

Highway 5 and Minnewashta Parkway/ Relocated Arboretum Access

KEY TO SCORES

- Does not meet measure (Red -)
- Minimally meets measure (Orange O)
- Meets measure (Yellow +)
- Exceeds measure (Green ++)

Concept 1: Signalized Full Access

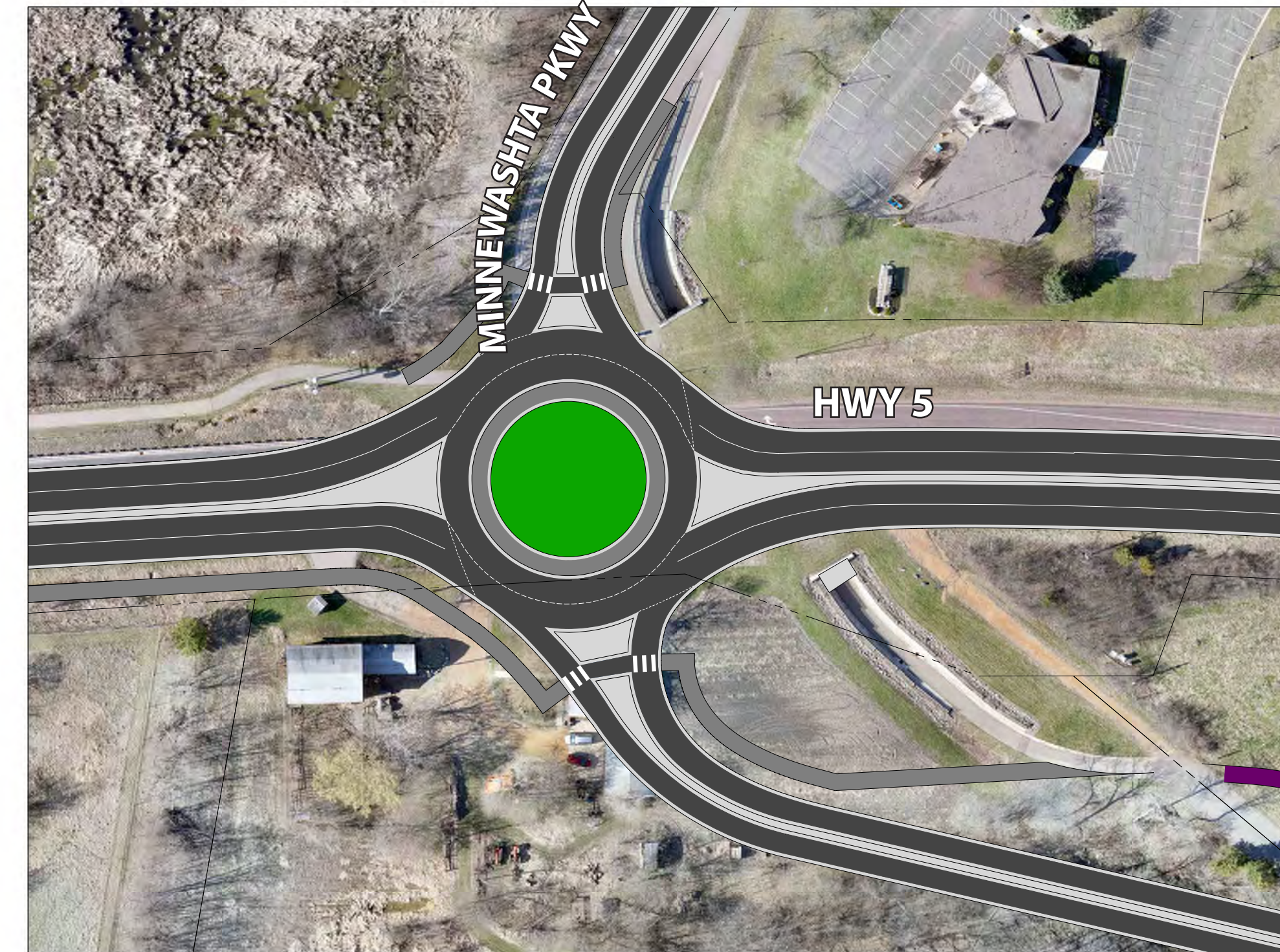


Scorecard

OVERALL SCORE: ++

Vehicle Mobility	++
User Safety	+
Support Multimodal Network	++
Respect the Environment	++
Financial Responsibility	++

Concept 2: Two-Lane Roundabout



Scorecard

OVERALL SCORE: O

Vehicle Mobility	O
User Safety	+
Support Multimodal Network	O
Respect the Environment	++
Financial Responsibility	+

What do you think?

KEY TO SCORES

- Does not meet measure (Red circle with -)
- Minimally meets measure (Orange circle with 0)
- Meets measure (Yellow circle with +)
- Exceeds measure (Green circle with ++)

Highway 5 and Crimson Bay Road/Arboretum Drive

Concept 1:
Right-In/Right-Out and Connection to 78th Street



Option: Arboretum Drive Exit Only

OVERALL SCORE
++

Scorecard		
	Vehicle Mobility	+++
	User Safety	+++
	Support Multimodal Network	n/a
	Respect the Environment	+++
	Financial Responsibility	+++

Concept 2:
Right-In/Right-Out with Left-Turn In



OVERALL SCORE
+

Scorecard		
	Vehicle Mobility	+++
	User Safety	+
	Support Multimodal Network	n/a
	Respect the Environment	+++
	Financial Responsibility	+

Concept 3:
Right-In/Right-Out with Left-Turn In and U-Turn



OVERALL SCORE
+

Scorecard		
	Vehicle Mobility	+++
	User Safety	+
	Support Multimodal Network	n/a
	Respect the Environment	+++
	Financial Responsibility	+

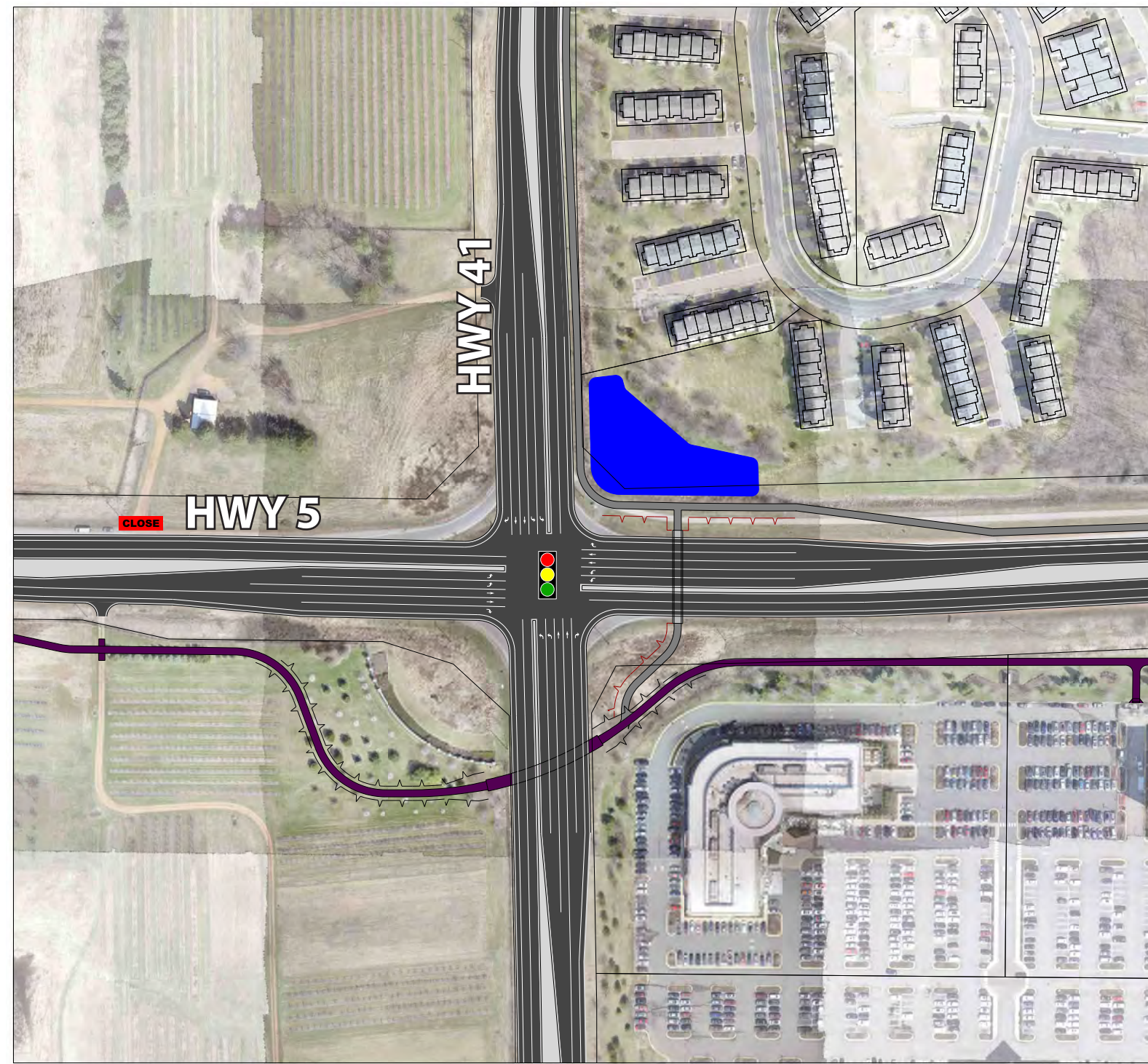
What do you think?

Highway 5 and Highway 41

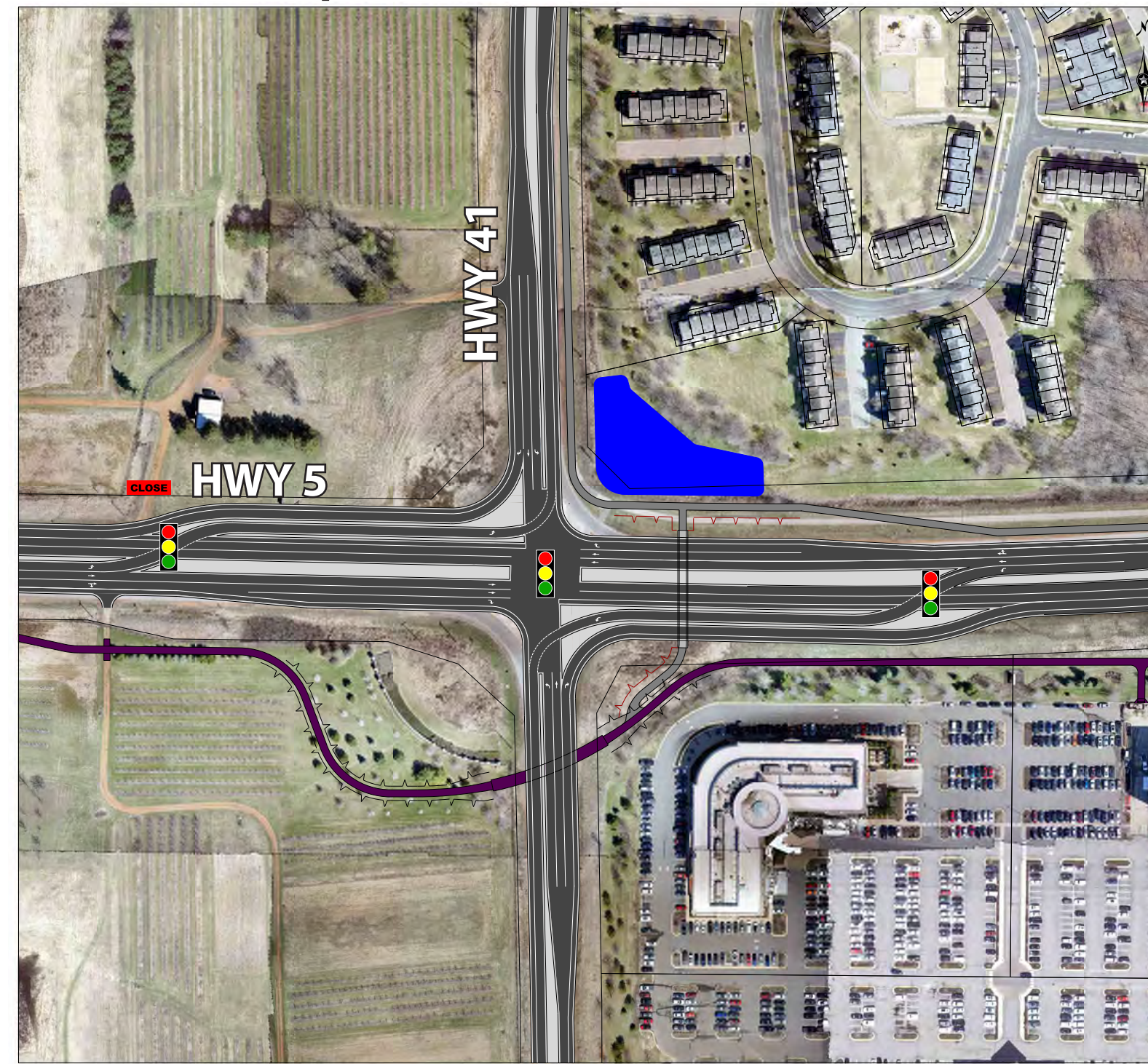
KEY TO SCORES

- Overall Score: - (Does not meet measure)
- Overall Score: 0 (Minimally meets measure)
- Overall Score: + (Meets measure)
- Overall Score: ++ (Exceeds measure)

Concept 1: Full Access - Additional Lane on Hwy 41 and Dual Lefts



Concept 2: Partial Displaced Left-Turn



Concept 3: Partial Displaced Left-Turn with Additional Lane on Hwy 41



Concept 4: Displaced Left-Turn



Scorecard OVERALL SCORE +

- Vehicle Mobility: ++
- User Safety: +
- Support Multimodal Network: ++
- Respect the Environment: +
- Financial Responsibility: +

Scorecard OVERALL SCORE ++

- Vehicle Mobility: +
- User Safety: ++
- Support Multimodal Network: ++
- Respect the Environment: ++
- Financial Responsibility: ++

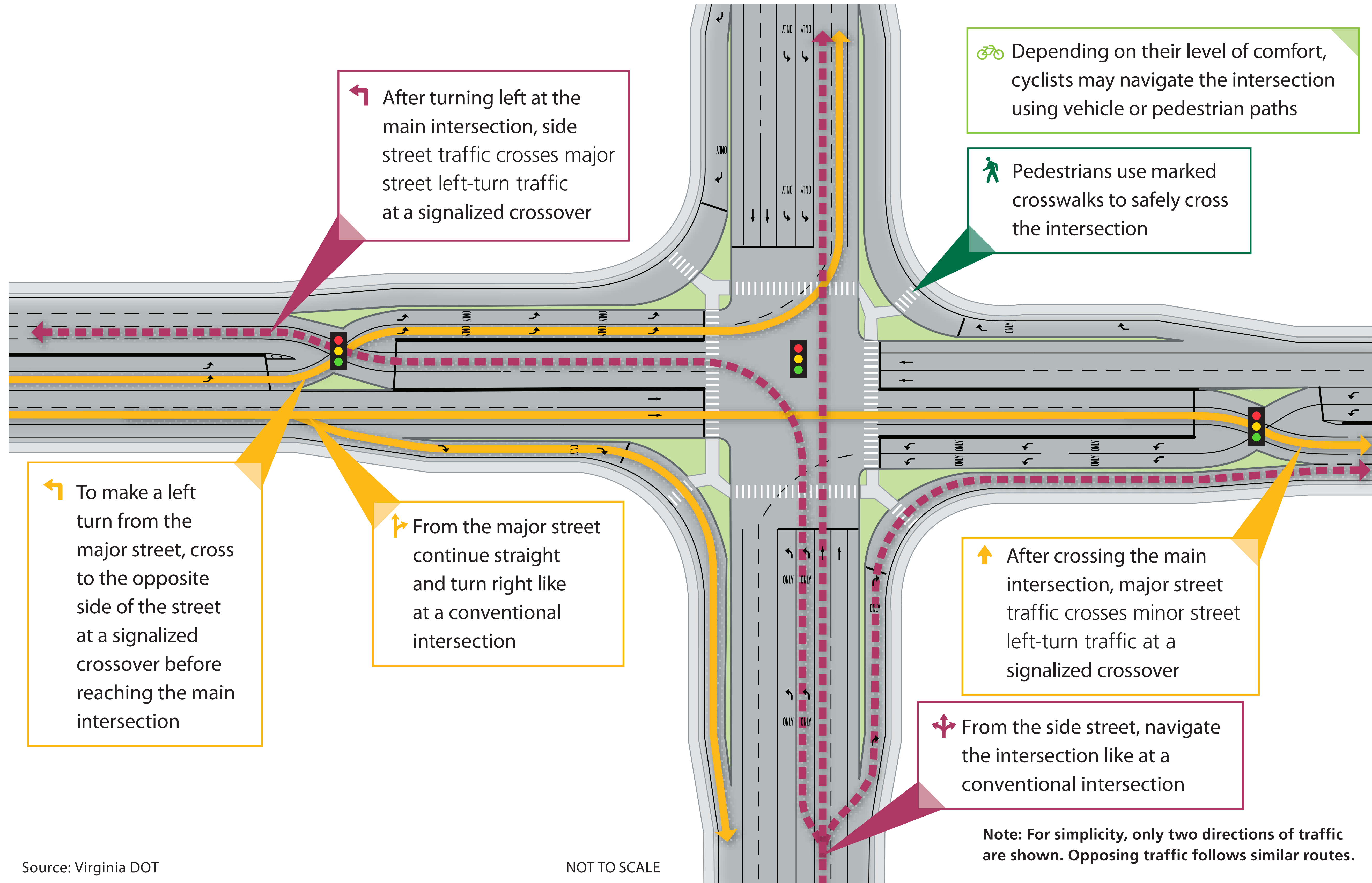
Scorecard OVERALL SCORE +

- Vehicle Mobility: ++
- User Safety: +
- Support Multimodal Network: ++
- Respect the Environment: +
- Financial Responsibility: +

Scorecard OVERALL SCORE +

- Vehicle Mobility: ++
- User Safety: ++
- Support Multimodal Network: ++
- Respect the Environment: +
- Financial Responsibility: +

What is a Displaced Left Turn Intersection?



Source: Virginia DOT

NOT TO SCALE