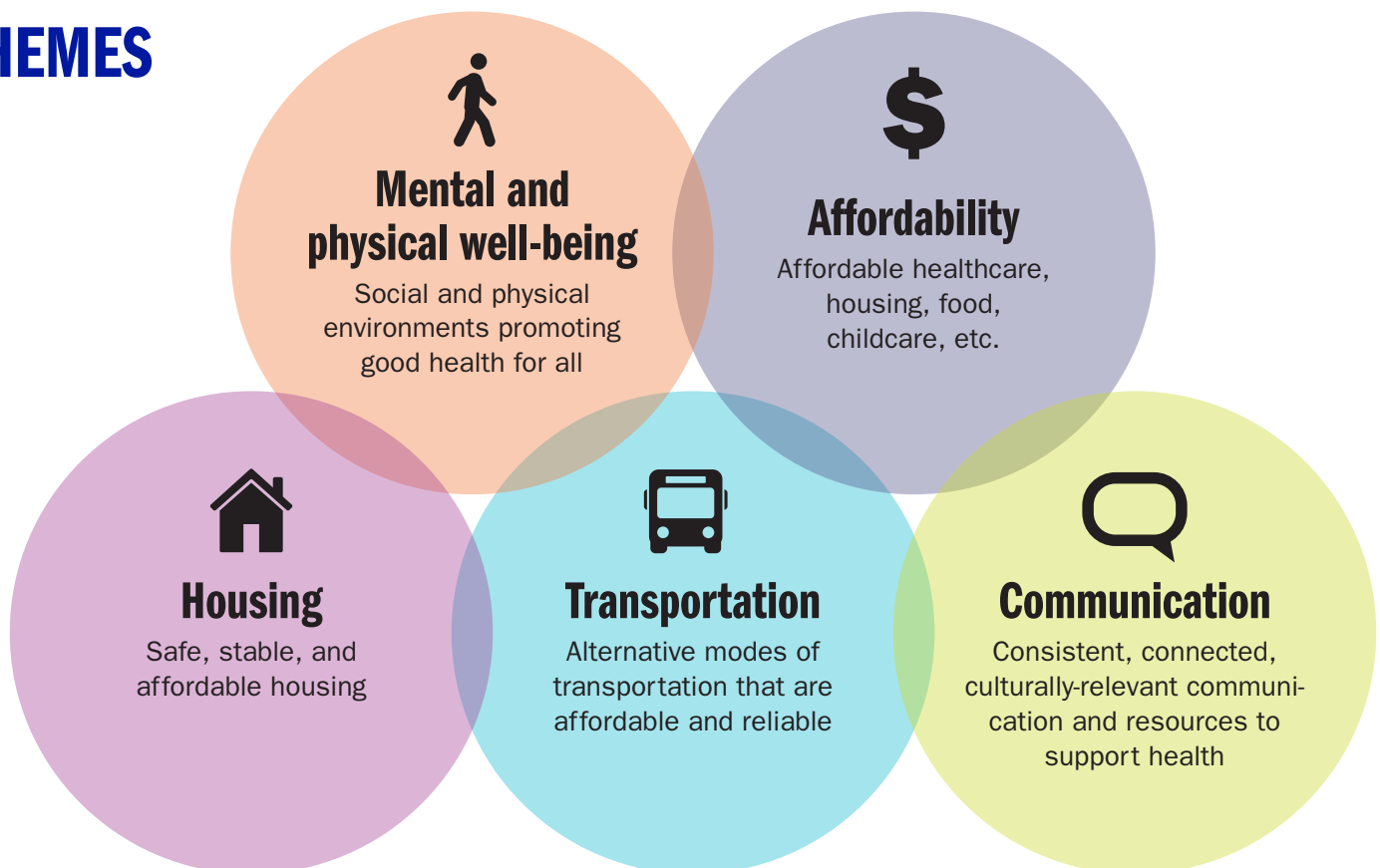


2019 Carver County COMMUNITY HEALTH ASSESSMENT RESULTS

GOALS

- 1 Understand what influences health**
- 2 Develop a community-wide plan of action to address pressing health concerns**
- 3 Improve the health of all who live, learn, work, and play in the county**

THEMES



Carver County Public Health
600 Fourth Street East
Chaska, MN 55318-2102



Healthy Carver for a Lifetime

Phone (952) 361-1329
Fax (952) 361-1360
public-health@co.carver.mn.us
www.co.carver.mn.us

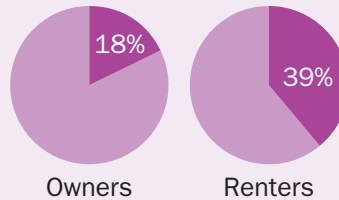
DATA SNAPSHOT

Housing

Nearly 40% of Carver County renters are **severely cost burdened**, leaving less money to cover other necessities like food and medical care.

Source: U.S. Census Bureau, 2013–2017 ACS

Carver County Households Experiencing Housing Cost Burden



Affordability

Even with health insurance, many people do not get the care they need because it is too expensive.

16% of county residents report healthcare costs make it **difficult to pay other bills or afford necessities** like food, transportation, or housing.

Rent is so expensive it's hard to save for a house.

Focus group participant



Communication

The assessment findings brought to light many situations where **a lack of awareness and understanding created barriers** for people to attain opportunities to pursue optimal health for themselves and their families.

People don't know who to call or where to go to get help.

Focus group participant



Transportation

Many people, especially those with limited income and medical and mobility conditions, lack transportation options.



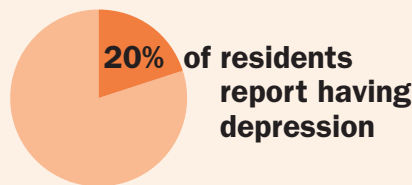
Focus group participant

Nearly **30%** of Carver County seniors reported that a **lack of transportation** kept them from where they needed to go, including jobs, medical appointments, or grocery shopping.

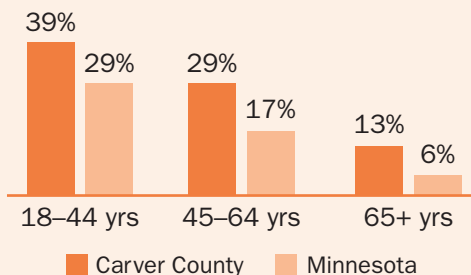
Mental and physical well-being

People who are **physically or socially isolated** are at greater risk for:

- abuse
- loneliness
- depression
- injury



Binge Drinking by Age Group



Binge drinking in Carver County **exceeds the state-wide average** and is more prominent in higher income households.

Source: 2018 Carver County Adult Health Survey

Want more info?

Visit www.co.carver.mn.us/CHA