



CARVER COUNTY PARKS

11360 Highway 212 West, Suite #2
Cologne, MN 55322
Phone (952) 466-5250 Fax (952) 466-5223
www.co.carver.mn.us/parks

Division of Public Works

11360 Hwy. 212 West, Suite #1
Cologne, MN 55322
Phone (952) 466-5200
Fax (952) 466-5223

Park Commission Meeting **Wednesday, March 16, 2016** **Revised**

6:30 Regular Meeting
Carver County Public Works
11360 Hwy 212, Cologne, MN 55322

Agenda

- 1) Call Meeting to Order, Roll Call (6:30 p.m.)
- 2) Introductions and Welcome of New Member Mark Lagergren
- 3) Election of Officers, Chair and Vice Chair (6:30)
- 4) Approval of the February 10, 2016 Regular Meeting Minutes (6:40 p.m.)
- 5) Additions or Deletions to the Agenda (6:40 p.m.)
- 6) Approval of Agenda (6:41 p.m.)
- 7) Commissioner Liaison Report (6:42 p.m.)
- 8) New Business (6:45 p.m.)
 - a. Minnesota Astronomical Site Plan Amendment
 - b. Three Rivers Park District Crow River Regional Trail Master Plan
- 9) Discussion Items (7:30 p.m.)
 - a. Lake Waconia Regional Park Master Planning Work
 - b. Wildlife Concerns
- 10) Staff Reports (8:15 p.m.)
- 11) Commission Member Reports (8:25 p.m.)
- 12) Set Next Meeting Date (8:30p.m.) – Proposed Date April 13, 2016
- 13) Adjourn Meeting (8:35 p.m.)

Please note if a Commission Member cannot attend the meeting, please call the Park Office at 466 – 5250.



Carver County Parks

Department of Public Works

11360 Highway 212
Suite 2
Cologne, MN 55322
Phone (952) 466-5250 Fax (952) 466-5223
www.co.carver.mn.us/parks

11360 Hwy. 212, Suite 1
Cologne, Minnesota 55322
Phone (952) 466-5200
Fax (952) 466-5223

MEMO

TO: Members of the Park Commission

FROM: Marty Walsh, Parks Director

SUBJECT: Revised March 16, 2016 Park Commission Agenda

DATE: March 15, 2016

Commissioners I have two items to add to the Wednesday, March 16, 2016 Agenda.

First, I would like introduce and welcome Mark Lagergren of the Norwood Young America area to the Park Commission. He was appointed at the March 1, 2016 meeting of the County Board,

Second, County Ordinance, which establishes the Parks Commission, states that the Commission shall meet during the second month to elect officers. Positions of Chair, Vice Chair and Secretary (Secretary need not be a member of the Commission) are to be opened for nominations.

Attached is the revised agenda. Feel free to call me if you have questions.

Draft Meeting Minutes February 10, 2016

Members Present: Carroll Aasen, Jim Boettcher, Jim Manders, Gerald Bruner, Ron Trick, Curt Kobilarcsik

Staff Present: Marty Walsh, Connie Keller

Call to Order: Manders, called the meeting to order at **(6:30p.m.)**

Approval of Minutes: **(6:30p.m.)**
Aasen motioned to approve the minutes of the December 9, 2015 regular meeting minutes Bruner seconded the motion.
Motion passed 6 to 0

Additions/Deletions to the Agenda: **(6:30p.m.)**
Election of new Park Commission chair will be on March Agenda

Approval of Agenda: **(6:32p.m.)**
Trick motioned to approve meeting agenda
Kobilarcsik seconded the motion.
Motion passed 6 to 0.

Commissioner Liaison Report: **(6:32p.m.)**

Not present – but stated to staff that he is excited about the planning work on Coney Island and is for the solicitation of funds for bike trails.

Open to the Public: **(6:32p.m.)**
None Present

New Business **(6:33p.m.)**

A. Regional Solicitation for Bike & Pedestrian Projects

Staff presented to the Park Commission two possible project applications for upcoming Regional Solicitation for Multi Use Trails and Bikeways. Staff shared maps of the projects for solicitation.

Staff stated that the first application would be for a segment of trail on the Lake Minnetonka Regional Trail extending from Stieger Lake Boat access in Carver Park Reserve to and through the intersection of Rolling Acres Road. This application would be for paving and to improve the safety at that Rolling Acres Road intersection.

The second application would be for a segment of the Lake Waconia Regional Trails which would extend from the City of Waconia along the southern edge of Lake Waconia, through Lake Waconia Regional Park and terminate at Island View Golf Course. This portion of trail would complete a regional trail connection between the park and the Dakota Rail Regional Trail which area residents have expressed a great interest in this trail connection.

Staff stated that application for these two projects was made in 2014 and scored below the available recommended amount of funding for Multi Use Trails and Bikeways. These two trails would be in Tier 1 or Tier 2 regional bicycle transportation network corridors which is a significant planning tool used in evaluating applications for the regional solicitation.

Staff stated that they did reach out to City of Chanhassen, Chaska, Carver and Victoria to see if they had other ideas for trail projects and nothing came to surface but a Hwy 41 bike project that would be a tier two project. Discussion was had on the Hwy 41 bike trail project, staff explaining different options for a trail and potential layout which would have to be studied for a future application.

Staff stated that the funding sources that are being applied for are federal funding with other funds coming from the parks and trails fund provided through the Metropolitan Council

Staff is requesting that the Park Commission recommend to the County Board that applications be submitted for the 2016 Regional Solicitation to include the project areas of the Lake Minnetonka Regional Trail and the Lake Waconia Trail.

Aasen made motion to bring to County Board for Approval

Kobilarcsik second the motion

All in favor

Motion passed 6 to 0

Questions or Comments

Kobilarcsik asked about the future trail after Island View Golf Course and was wondering if it is on the east or west side of road; Staff stated that it may be on the east side unless the road shifts then that would determine what trail placement would be used. We would have to do more work to look at the area.

Bruner asked if the trails need to be paved or gravel; Staff stated that multi-use trails likely will be paved.

No other questions or comments

Discussion Items (6:50p.m.)

A. Lake Waconia Regional Park Master Planning Work

Staff stated that we had a well-attended public meeting for the master planning work; there were about a hundred and sixty people along with some of the park commission members in attendance.

Staff shared with the park commission the comments that were made on the concept plans, with likes and dislikes. Items for the island that people seem to like higher level development but not has high as the number of trails shown on the concept plan. Trails and overlooks were popular; they liked the eastern island access and using the west side of the island for day use activities. Other popular items were having a central court yard visitor center, with camping with beach area. Staff stated that having buildings in the interior of the island is a bit of a concern with vandalism and would prefer the buildings be visible from water. Staff stated that a tower structure could be a better fit for the interior of the island, might be less vandalism.

Staff asked the Park Commission Members if they have any likes or dislikes or thoughts of the concepts presented.

Staff commented that the rookery area on the island has no activity or very little activity at this time, according to the US Fish and Wild Life. Manders asked what type of activity was in or is in the rookery; Staff stated that Egret or Blue Heron primarily, but no Cormorants.

Staff shared the other concept plans with less development and plans with more development

Staff stated that next week they are going out to the Island with Land and Water Services and consultant to tour the island and to see if there are any regulations on what we want to do on the island. We should have more of an idea of what we can do out there.

Staff discussed what the entrance on to the island was like originally and if that is something we want to incorporate into the plan, for a strong visual for the entrance to the island. Discussion was had on different entrance points, camping areas and day use areas and whether there will be power or not out to the island.

Comments or Questions

Aasen stated at the table he was at during the public meeting stated that didn't like a central docking area they like to see it spread out.

Bruner stated that he like to see docks by the camping area so you wouldn't have to haul your equipment.

Kobilarcsik stated he like the more central dock in the middle of the island, staff stated that old photo's indicate a dock area in the middle of the island. He also commented that it would be nice for the trail to go around the whole island; Staff stated on the one side of island it is very steep and would make it difficult to continue the trail.

Manders asked how much vegetation is on the east side of the island; Staff stated that most of it is sumac and brush.

Manders asked if the trails will be limestone; Staff stated we haven't started to talk about that yet.

Kobilarcski stated he likes the idea of concept #2 and the concept of a lookout tower.

Manders stated that the funding to accomplish developing the island and park is limited. He also commented that he would lean to push more of the funding to the main park; Staff stated that the Island comes with its own funding source through the charitable pledge donation.

Trick asked staff to see if there is only so much that we can do on the island; Staff stated we will meet with people to see what type of activity we can have and any variances we may need.

Main Park Area Discussion

Staff also shared the concept plans for the main park, staff stated that the adventure abounds was what people like to see. Some of the comments were open lawn space with shelters, event center improvements, rest room changing area and concession area. Other strong points are sledding hill improvements, disc golf, and trails. One of the strong questions are how do you get people out to the island.

Discussion was had on the different items offered and the different concepts on how things would work, some of the comments received were keeping the event center; Staff shared a list of events held at the event center and numbers associated with these events. Discussion was had on the event center and the general group size of events and what does the future of the event center look like.

Staff stated that with any of the concepts for the park things would be done in small steps due to funding.

Discussion was had on different elements of the park and possible use for the sledding hill in the summer and possible use of the other overlook by the church property. Staff would like to see the park as a destination park.

Staff stated that we will go forward with refining the plans with the public comments and present this new concept to County Board on March 23rd and then presenting that back out to public for comments and then bring back to Park Commission in the form of a recommendation to County Board. Once we have a preferred concept refined we will prioritize a phase I development for park, things will happen in small phases due to funding.

Questions or Comments

Aasen asked about rebuilding the event center with classroom incorporated into the center; Staff stated that was a comment that was made we haven't really explored that and we may have to have the consultant come out to look at the building and other options.

Aasen stated that the splash pad proposed seems like it would be hard to manage with the sand coming from the beach; Staff stated that it might not be an actual splash pad but maybe a play element, the plans are a concept and not actually what we will do.

Manders asked about the utilities and how would they impact the plans for the park; Staff stated that we would let them know our plans and also let them know we prefer that they put the utilities outside the park boundaries.

Boettcher stated that with the boat landing will people park there for the island shuttles if docks were placed near the boat landing; Discussion was had on parking and how we deal with that; Staff stated that might be something we will have to consider when placing the docks for shuttles out to the island and monitoring the cars parking in the lot.

Manders asked about the architectural feature for the park; Staff stated that will be something to come with the architect.

No other questions or comments

B. Service Delivery

Staff shared with Park Commission member's changes to service delivery which could result in additional costs for the parks department items covered:

1. Waste Management

Staff stated that changes to waste management, with adding recycling at the parks which could increase the cost for waste management at the parks. Staff stated that it could be more labor intensive to add this service, but aware that people would like to see it. Discussion was had on whether it would work or not and problems that might arise from it.

2. Coney Island

There will be additional cost to deliver service that may be a public or private service to shuttle people to island. One of the items that might be a stumbling block is the insurance and will that be something we have to cover and the cost of adding docks. These are a few things that will cost additional money for the parks.

3. Recreation Equipment Rental Operations

Staff stated that we are planning on having rental equipment at Lake Minnewashta Park and/or Lake Waconia Park; staff will bring back to the Park Commission members a proposal to use legacy fund dollars to use for recreation equipment for rental.

4. Policing

Staff stated that policing the parks is another issue that has come up due to people that are doing things that are not allowed in the parks and trails (biking, walking on ski trails, off leash dogs, etc.). We need to make sure that things are remaining pleasant and peaceful in the parks. Staff stated having the parks policed is a priority for the parks. Discussion was had on things that are happening the parks and how do you inforce without full time policing.

5. Emerald Ash Borer Disease

Staff stated that we don't currently have a response plan for that and will work in the next year to develop. Which will be developing areas were we control and not control, this will lead to some financial constraints for controlling this disease and having a plan which identifies areas that need to have control.

Staff asked the Park Commission if they see any other service needs

Aasen stated that at the Lake Waconia master planning meeting, the park entrance fees came up in the conversation. Discussion was had on the park fees and if we didn't have them what would be the impact on the parks and were will funds come from if we removed those entrance fees and conversation on raising funds to complete projects in the park. Staff will do some reach on what impact would it be for carver county tax payers if fees were eliminated.

Questions and Comments

Waste Management

- Bruner stated that he is all for the recycling and it reflects a good image for the county.
- Kobilarcsik stated that he would like to see recycling in the parks.
- Manders stated that is a good idea, but you have to have a good system otherwise it will fail.

Policing

- Boettcher stated that at the public meeting for Lake Waconia Park that people would like to see no liquor on the island
- Aasen asked if it would be that the parks would hire their own policing staff; Staff stated that might be an option for peak times, due to the sheriff's office having their own budget crunch.
- Manders asked if the parks are being used as dumps; Staff stated yes at times.

No other questions or comments

C. Park Entrance Electronic Message Boards

Aasen commented that we should look into message boards at the parks; Staff looked in to city ordinance language and shared that information with the parks commission. Aasen also stated that it might be nice to have a message board at the parks for different event messages or public emergency messages. Discussion was had the purpose and use of sign and what type of message board it would be.

Staff stated they will look into costs and what type of sign would be available.

Staff Reports: (8:32 p.m.)

A. Metropolitan Council, Change to CIP Reimbursement Program

Staff shared with Park Commission that the Metropolitan Council will be changing the ways that the parks is funding CIP, staff explained the current method and the planned changes that the met council is proposing. Staff shared the pros and cons for the current method and the pros and cons on the proposed change. The changes will change the time period of how the county is reimbursed. This item is not part of the current bonding session but will be part of the future bonding session.

No Questions or Comments:

B. MN River Bluffs RT

Staff updated on the progress on the MN River Bluffs trail improvements, the contractor will be placing the bridge over spring creek the week of February 15th.

No Questions or Comments

C. Legislative Update

Metropolitan Council initially submitted a request for 11 million in state bonds to be match with 7.3 million in council bonds and the Govern came out with his budget 10 million in state bonds. Met council has to support the governs budget so council will match 6.6 million in bonds. Implementing agencies can ask for more, Met Council won't support it. It would mean about \$46,000.00 for us.

Session starts March 8th and is done my end of May.

No Question or Comments

Staff also stated that the closing on Coney Island has happen earlier this month.

Commission Member Reports: (8:44 p.m.)

Bruner stated that at the last TAC meeting the US Fish and Wild Life group had stated that there were a large number of birds destroyed on the island, due to a petition signed by residents and a permit was issued to remove these birds and he was very disturbed by that. He wanted to make a motion that this parks commission board makes a motion for no further killing of wildlife in county park land unless it is because of human life.

Staff stated that we could put in on our next agenda for conversation, but wanted to make sure that commission was aware that sometimes we have to remove animals from the park due to unhealthy situations. A discussion ensued on this topic. Staff stated that it will be up to park commission if they would like to go forward with a recommendation on the topic.

Bruner stated he wanted to be on record that he was against the killing of wildlife in the parks.

Aasen attended the public engagement meeting at the event center and good comments from public. Aasen also attended the wild game feed at the event center and was very well attended.

Bruner was at the LWP public engagement meeting also and was surprised at the attendance numbers.

Boettcher also stated that he was also surprised at the attendance of the meeting.

Kobilarcsik shared his thoughts on the public engagement meeting and how long people stuck around and the thoughts and input that were shared. Also was wondering if there would be another event; Staff stated that the next public meeting will be on March 9th at 6:30 at the event center, it will likely be a presentation of some of the concerns that people had. We will give people a chance to comment again, and bring back to park commission.

Manders wanted to know about the Lake Minnewashta Ski trails; Staff stated that they are in good condition ready for skiing.

No other comments

Next Meeting Date: (9:06 p.m.)

Next meeting will be on March 16, 2016 at 6:30p.m. Will be held at the Public Works Building in Cologne

Due to Public Engagement meeting scheduled for March 9th for the Lake Waconia Regional Park Master Plan, the Park Commission March meeting will move to third Wednesday of month.

Adjourn Meeting: (9:07 p.m.)

Boettcher motioned to adjourn the meeting

Aasen seconded the motion.

Motion passed 6 to 0.



CARVER COUNTY PARKS

11360 Highway 212 West, Suite 2
Cologne, MN 55322-8017
Phone (952) 466-5250 Fax (952) 466-5223
www.co.carver.mn.us/parks

Division of Public Works

11360 Hwy. 212 West, Suite 1
Cologne, MN 55322-8016
Phone (952) 466-5200
Fax (952) 466-5223

MEMO

To: Members of the Park Commission
From: Martin Walsh, Parks Director
CC: Lyndon Robjent, County Engineer
Tim Lynch, County Commissioner
Date: 3/11/2016
Re: Minnesota Astronomical Society Site Plan Amendment

Background

Minnesota Astronomical Society (M.A.S.) has had a lease agreement to operate an observatory building since 1988 at Baylor Regional Park. The Onan Observatory building was constructed during 1998-1999, additional construction occurred on the classroom and Sylvia A. Casby Observatory building during 2012 -2014.

The lease agreement has been renewed a couple of times. The most recent agreement commenced November 1, 2011 and is valid for a 10 year period.

The Minnesota Astronomical Society (M.A.S) is requesting an alteration to their lease agreement and site plan which was approved as Amendment No. 1, by the County Board August 7, 2012. They are also requesting to construct walkway, retaining walls, railing, and remove tree at the Eagle Lake Observatory.

The proposed site plan would provide additional viewing space for telescopes to be positioned around the perimeter of the Onan Observatory building. The current site plan and proposed site plans are provided to help reference the difference in plans.

The area proposed for expansion does not have an existing concrete surface. The betterment would be consistent with the Amendment No. 1, by providing an accessible route around the complex of buildings, and adds needed space for observation. The work would improve the appearance of the site.

Staff is supportive of a site plan amendment and proposed construction activity.

It is requested, that the viewing area be continuous and extend through the area of the existing signage for the site to eliminate the jog in the retaining wall for maintenance and continuity of the view area. Construction of the retaining wall shall be done per manufactures specifications and

match the most recent retaining wall materials of the Casby Observatory. All grading and site work shall conform to standard practices ensuring that the sub grade is prepared properly for installation of retaining walls and flat work. Drainage and cross slope to ensure proper drainage accounted for. The railing material must be complementary to the existing buildings in color and style and compliant with applicable building code. The handrails on the staircase shall be complementary to railings and installed per building code.

M.A.S is also aware that a step in front of the Classroom building has become a concern as guests have stumbled or tripped. Work is to be done to correct the issue. Other minor site work such as filling in areas of erosion is to be done.

Prior to construction activity and installation, M.A.S will review and obtain approval of the planned work and materials with County Park Staff before proceeding with the project.

Recommendation: Pending receipt of a revised site plan with the requested change showing the viewing area as continuous, it is recommended that the Park Commission request the County Board approve Amendment No. 2, to the lease agreement between Carver County and the Minnesota Astronomical Society. The recommendation is contingent on M.A.S. receiving all necessary permits associated with the construction, installation and obtaining Staff approval before work begins.

DRAFT
AMENDMENT NO. 2

LEASE BETWEEN CARVER COUNTY
AND THE MINNESOTA ASTRONOMICAL SOCIETY

Amendment to Site Plan and Construction Work
of:
Eagle Lake Observatory

CONSTRUCTION AND OPERATION LEASE

THIS AGREEMENT, entered into by and between the CARVER COUNTY, a Minnesota political subdivision, hereinafter referred to as The "COUNTY", and the Minnesota Astronomical Society "M.A.S";

WHEREAS the COUNTY owns certain property that is located at;
Baylor Regional Park in Camden Township;

WHEREAS M.A.S will construct, maintain and operate an observatory hereafter referred to the Eagle Lake Observatory at Baylor Regional Park;

WHEREAS M.A.S has requested an amendment to the Site Plan for walkway/observation area, retaining walls, railings;

WHEREAS a M.A.S agrees to construct, and hereafter maintain walkway/observation area, retaining walls, railings at no cost to the County;

NOW THEREFORE the COUNTY, for and in consideration hereinafter mentioned amends the Site Plan for the Eagle Lake Observatory as shown in Exhibit A and with the below stipulations:

1. M.A.S. shall, at M.A.S's expense, construct, maintain, repair and renew walkway/observation area, retaining walls, hereinafter the "Improvements". Such Improvements are to conform to standard practices, manufactures specifications, and building code.
2. The "Improvements" are to be located as per site plan (Exhibit A).
3. Any work conducted by the M.A.S. shall be at the sole cost and expense of the M.A.S.

5. M.A.S. shall, complete the Improvements including paved walkways, retaining walls, railing as depicted in Exhibit A.
6. M.A.S. shall at all times be subordinate to the rights of Carver County.
7. M.A.S. recognizes the terms and conditions of the lease agreement between Carver County and M.A.S. dated October 31, 2011 remain.
8. No waivers, alterations or modifications of this Lease or any agreements in connection therewith shall be valid unless in writing duly executed by both COUNTY and M.A.S. herein.
9. M.A.S. agrees to complete the "Improvement" by December 31, 2016.

M.A.S. having signed this Lease, and the COUNTY having duly approved this Lease on the ____ day of _____, 2016, and pursuant to such approval, the proper officials having signed this Lease, the parties hereto agree to be bound by the provisions of this Lease.

Approved as to form:

COUNTY OF CARVER
STATE OF MINNESOTA

Assistant County Attorney/Date

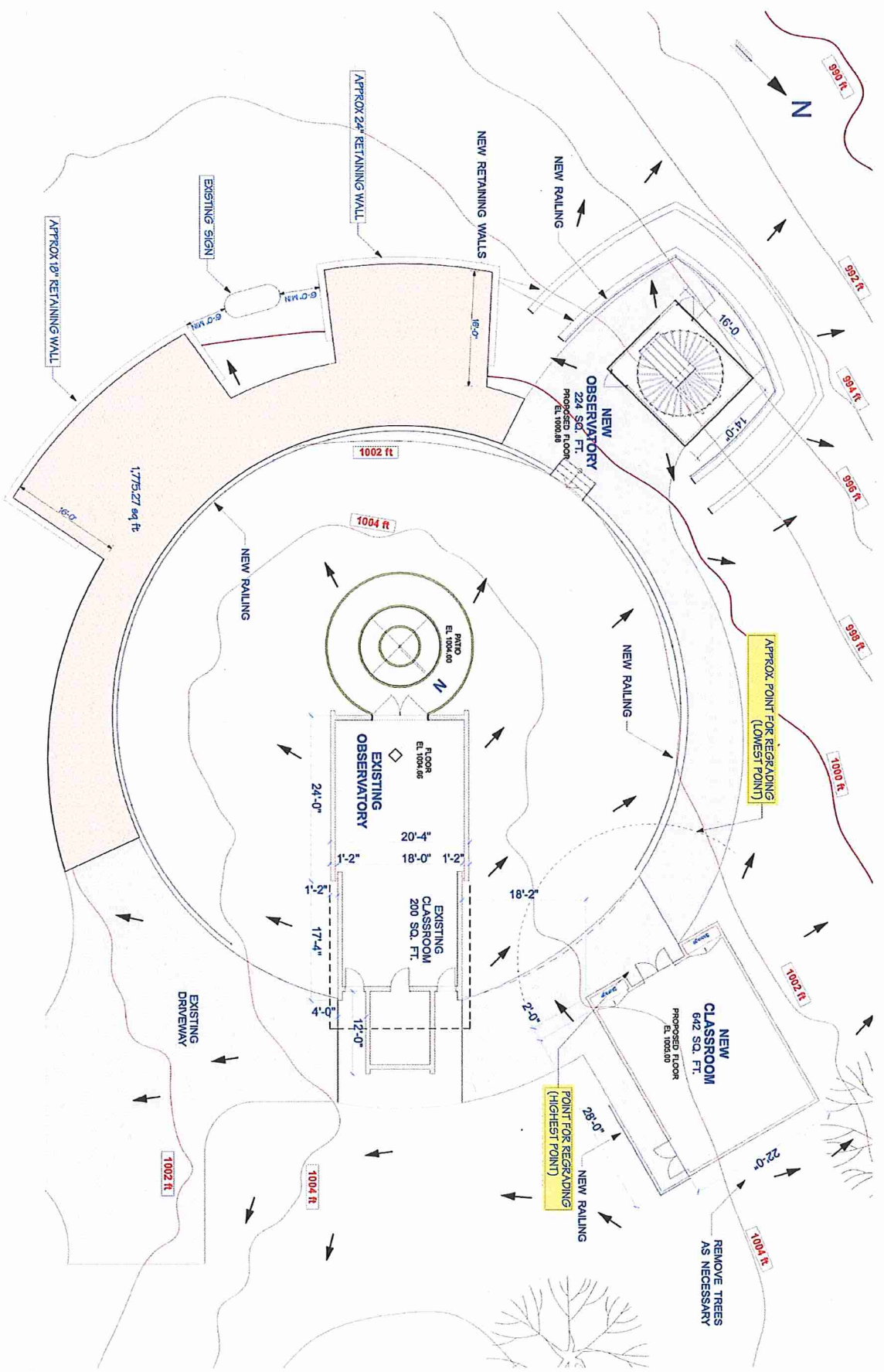
Chairperson, County Board/Date

Division Director-Designee/Date

M.A.S. President/Date

County Administrator/Date

ONAN Committee Chair/Date



Minnesota Astronomical Society & Baylor Park

10775 County Road 33
Norwood-Young America, MN 55397

SITE PLAN

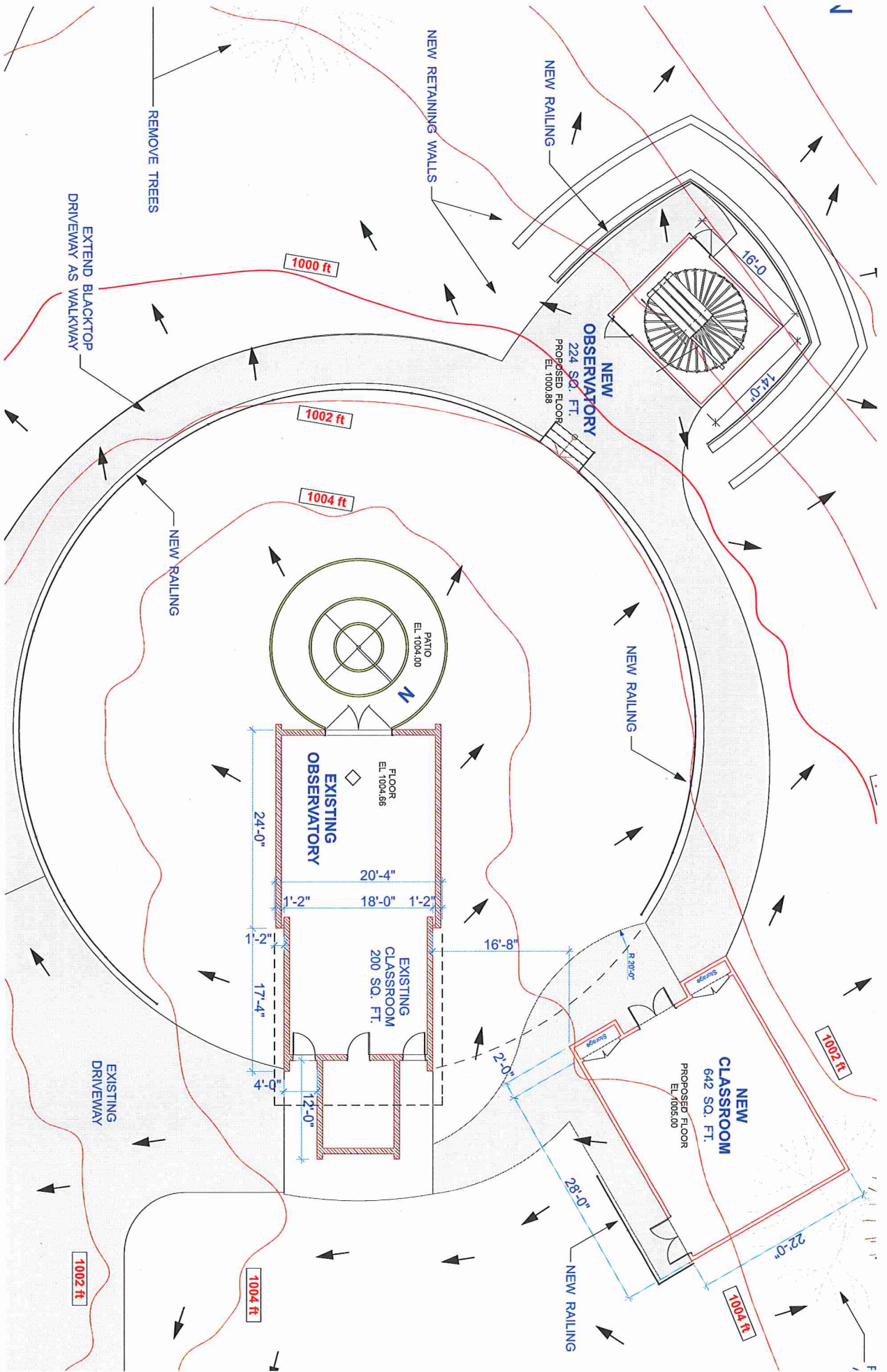
SCALE : 1/16" = 1'-0"

JOB NO. 2012.001.MAS

MAS - BAYLOR PARK CLASSROOM

Design by: Merle Hilner
6954 173rd Street West
Farmington, MN 55024
Ph : (952) 797-2439
mhilner@charter.net

Existing Site Plan





Carver County Parks

Department of Public Works

11360 Highway 212

Suite 2

Cologne, MN 55322

Phone (952) 466-5250 Fax (952) 466-5223

www.co.carver.mn.us/parks

11360 Hwy. 212, Suite 1

Cologne, Minnesota 55322

Phone (952) 466-5200

Fax (952) 466-5223

MEMO

TO: Members of the Park Commission

FROM: Marty Walsh, Parks Director

SUBJECT: Three Rivers Park District Crow River Regional Trail Master Plan

DATE: March 11, 2016

Members please see the attached Memorandum from Nate Kabat, of the County's Planning and Water Management Department related diagrams of the proposed alignment for the Three Rivers Park District Crow River Regional Trail Master Plan.

Three Rivers Park District is requesting a trail alignment and connection to the Luce Line State Trail east of the City limits of Watertown and located within Watertown Township in Carver County.

Mr. Kabat's has provided a staff report on the proposed trail alignment.

The proposed trail alignment is not a part of the County's Comprehensive Plan for Parks and Trails at this time and would be located within Watertown Township. The County's Planning and Water Management Department responds to proposed planning and development located in the township areas of the County.

The proposed trail alignment is supported by Metropolitan Council Parks and Opens Space Staff. If the proposed master plan is approved by the Metropolitan Council the trail alignment would be eligible for funding through the Council .

The Crow River Regional Trail Master Plan is unclear at this time who would be the responsible party to seek funding from the Metropolitan Council for the section of trail located within Carver County. The plan should indicate what the expectation is for financing the proposed trail.

Recommendation: Staff request that the Park Commission recommend to the County Board support of the proposed Crow River Regional Trail alignment and Master Plan. It is further requested that Carver County consider being a financial partner in planning and constructing that portion of the trail within Carver County as a part of a larger project to make the trail connection into Hennepin County. The proposed trail alignment does not have a logical termination point within the County limits. It is logical to consider a partnership which would complete a trail connection and not terminate at the county boundary.



Public Services Division
Planning and Water Management Dept
Government Center - Administration Building
600 East 4th Street
Chaska, Minnesota 55318
Phone: (952)361-1820
Fax: (952)361-1828

Memo

To: Carver County Parks Commission
From: Nate Kabat, Planning & Water Management
Date: March 11, 2016
Re: Three Rivers Park District Crow River Regional Trail Master Plan
CC: Marty Walsh, Paul Moline, Tom Vellenga, Lyndon Robjent

Enclosures: none

Purpose:

- Three Rivers Park District has been developing a master plan for its Crow River Regional Trail.
- Carver County was recently informed that the proposed trail alignment would include a 0.3 mile segment in the northeast corner of Watertown Township to link with the Luce Line Regional Trail at the intersection with County Road 26 (see attached Luce Line Connection map).
- Because the proposed Crow River Regional Trail plan developed by the Three Rivers Parks district includes a 0.3 mile segment in along Carver County roads, the district is required by the Metropolitan Council to obtain a resolution of support from Carver County.

Planned Corridor:

Beginning at the Luce Line Trail, the proposed Crow River Regional Trail would follow CR 26 right-of-way north, then head northwest by following CR 20 right-of-way, and then head north to Delano along existing trail that follows CR 17 along the Wright County-Hennepin County line. Eventually the trail would lead through Lake Rebecca Regional Park and Crow-Hassen Regional Park in Hennepin County before connecting to a trail planned to follow the Mississippi River (see attached Preferred Route map).

Funding Implications:

The portion of the trail in Carver County is classified as a regional trail, and would be eligible for funding provided through the Metropolitan Council. Carver County would implement the trail in partnership with Three Rivers Park District as regional funding becomes available. The ultimate funding arrangement could be pursued under one of the following three options:

- Three Rivers Park District is the responsible party for funding requests and build-out.
- Carver County is the responsible party for funding requests and build-out.
- Three Rivers Park District and Carver County enter a joint partnership.

Process:

The following will summarize the process staff are following to develop the resolution and inform impacted stakeholders.

- Jan. 21: County staff notified of the plan by Three Rivers Park District
- Jan. – Feb.: Staff review by County Departments: Land Management, Planning and Water Management, Public Works, and Parks.

- Feb. 17: Staff meeting with Three Rivers Park District, City of Watertown, Wright County, and Metropolitan Council
- March 11: Communication sent to Watertown Township soliciting feedback
- March 16: Parks Commission meeting
- April 19: County Board Meeting to consider resolution of support

Findings:

The following will summarize review findings by County staff:

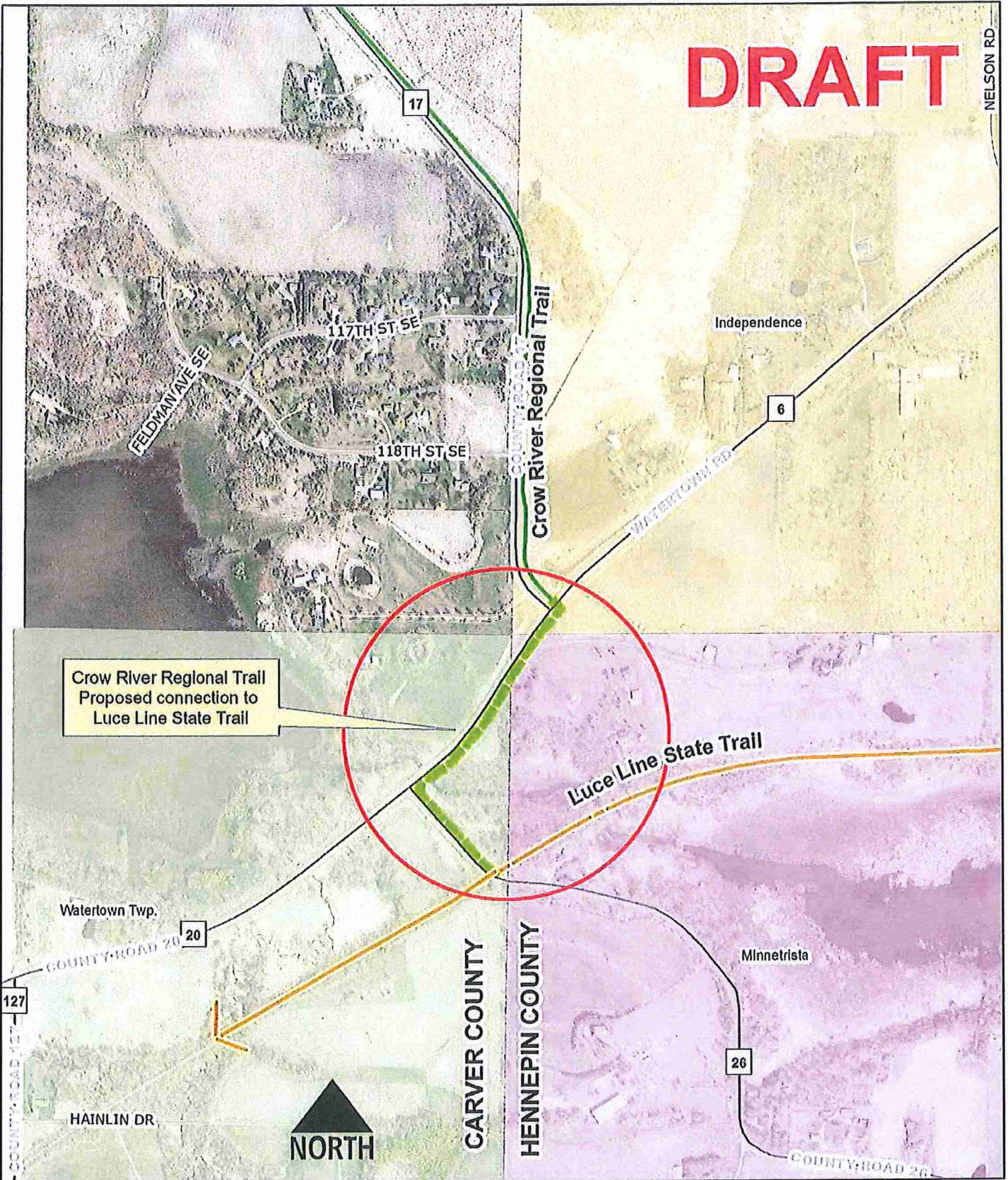
- *Land Management:* Staff has no concerns with the proposed alignment.
- *Parks Department:* Staff shares the concern of Planning & Water management detailed below regarding consistency with the Comprehensive Plan. With that concern addressed, staff is encouraged by the new amenity that the new regional trail link to the Luce Line trail will create.
- *Planning & Water Management Department:* Staff note that the Three Rivers Park District's proposed regional trail alignment is not reflected in the Carver County Comprehensive Plan, and could conflict with the planned alignment that would follow the Crow River heading north from downtown Watertown. Staff, in close coordination with Parks, followed up with Metropolitan Council to ensure implementation of this link would not risk implementation of a future trail alignment in Watertown. The Metropolitan Council has provided written assurance that it is willing to support implementation of both trail alignments.
- *Public Works Operations and Program Delivery:* Staff has no concerns with the proposed alignment, but request close coordination during implementation.

The following will summarize comments received from stakeholders:

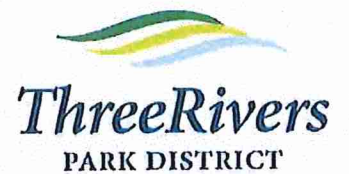
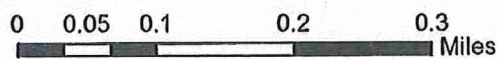
- *City of Watertown:* Has expressed concern that the alignment proposed by the Three Rivers Park District does not reflect the Crow River Regional Trail alignment defined in the Carver County Comprehensive Plan and the City of Watertown Comprehensive Plan. The City sees this alignment as an important future amenity, and as a component of its economic development plans to promote downtown as the, "Heart of the Luce Line Trail." The City has decided to not oppose the Three Rivers Park District's planned alignment in exchange for assurances from the Metropolitan Council that the trail defined by the City and County Comprehensive Plans will still be supported in the future.
- *Watertown Township:* The Township has been notified of the proposed trail alignment. No comments have been received so far. Should the Township raise any concerns prior to the Board's consideration of the resolution, those concerns will be addressed.

Staff Recommendation:

The Metropolitan Council has provided written assurance that it supports the implementation of the Three Rivers Park Districts' trail plan AND future implementation of the planned regional trail connection going north out of Watertown more closely following the Crow River as a regional trail. Given this assurance, and that no other concerns have been identified, staff are drafting a resolution of support to recommend to the Board. Should Watertown Township raise any concerns, these will be addressed before submitting a resolution of support for Board approval.






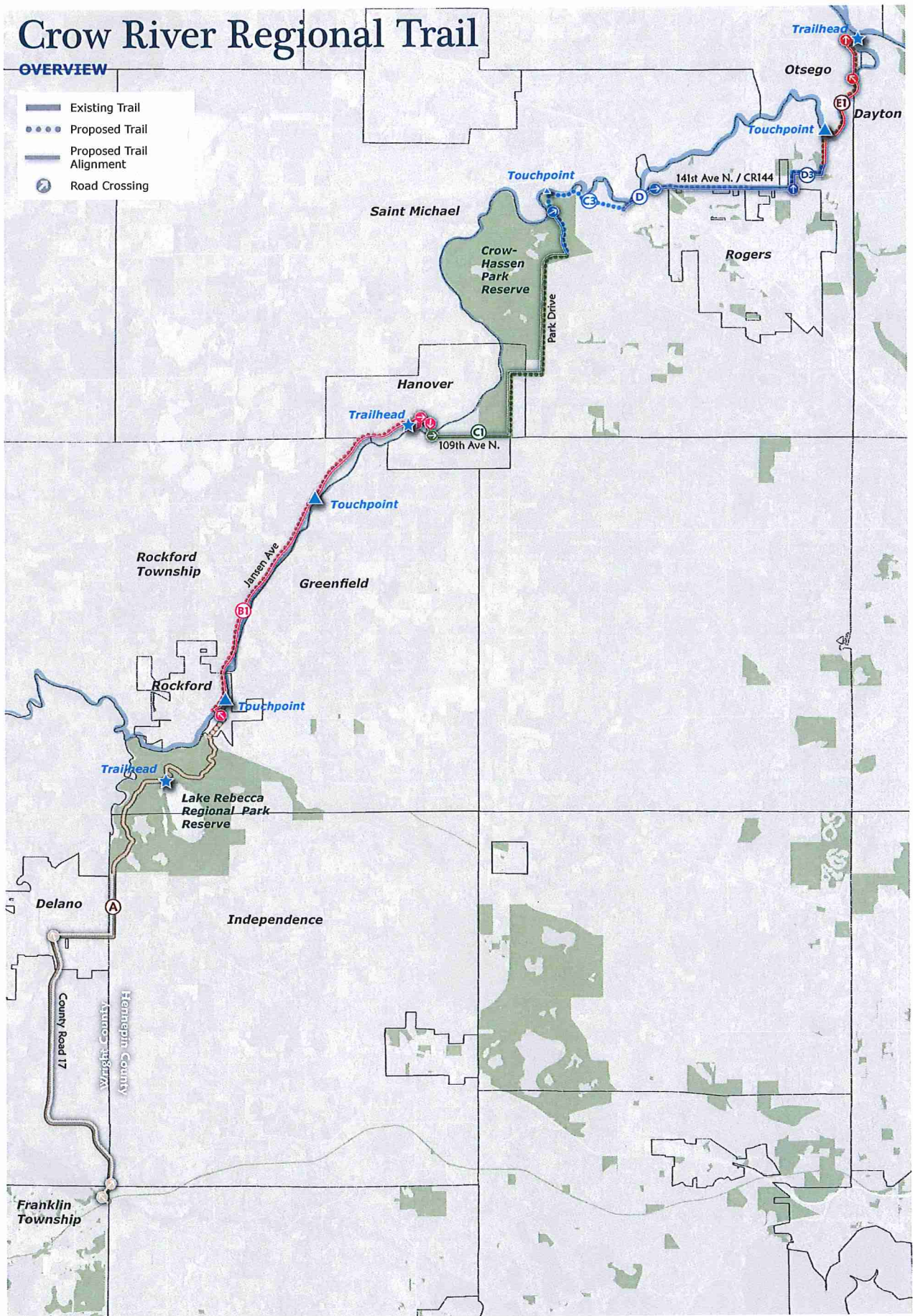
Crow River Regional Trail Proposed connection to Luce Line State Trail



Crow River Regional Trail

OVERVIEW

-  Existing Trail
-  Proposed Trail
-  Proposed Trail Alignment
-  Road Crossing



Crow River
Regional Trail Master Plan



Crow River Regional Trail

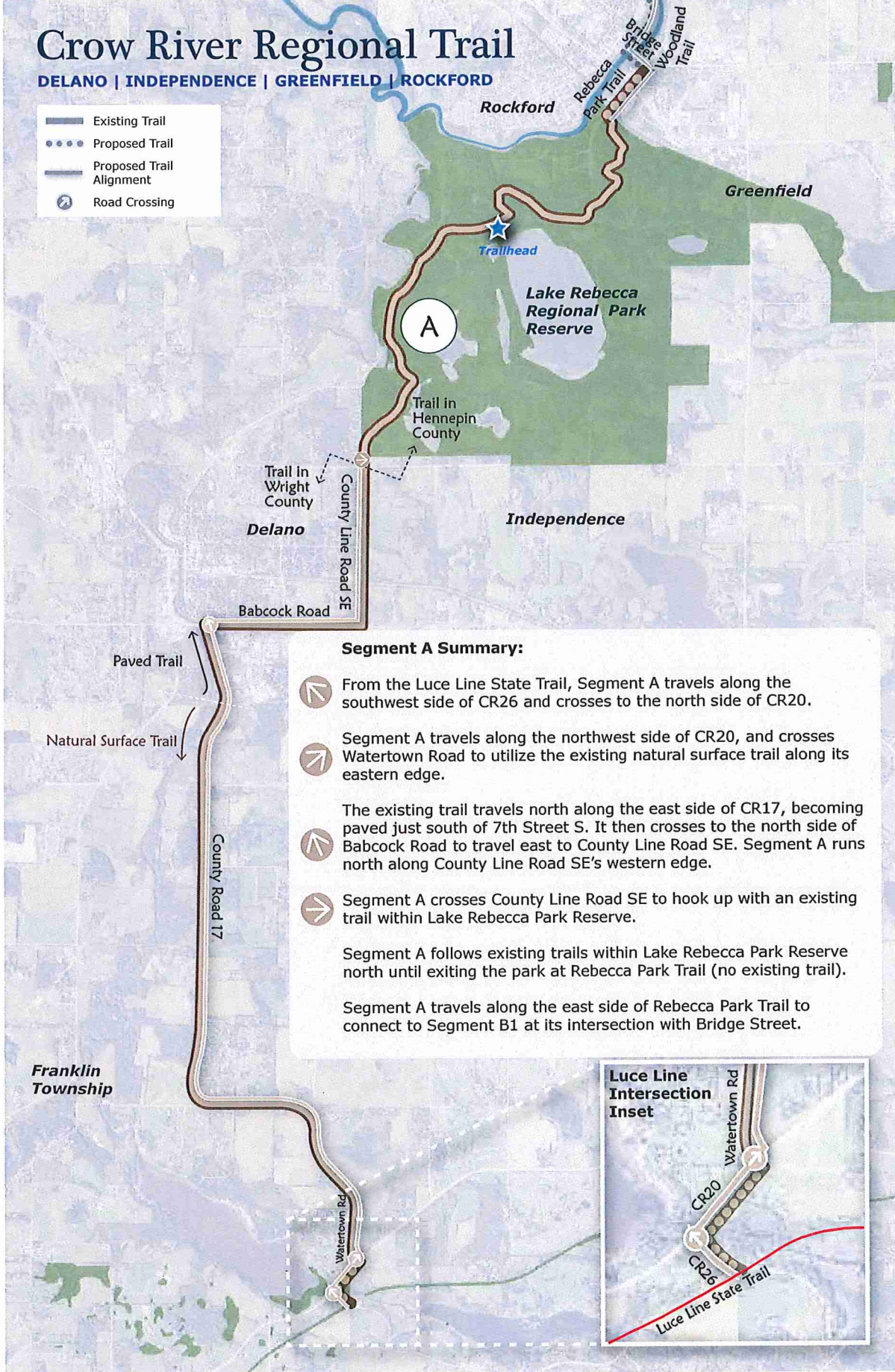
DELANO | INDEPENDENCE | GREENFIELD | ROCKFORD

Existing Trail

 Proposed Trail

 Proposed Trail Alignment

 Road Crossing



Segment A Summary:

- From the Luce Line State Trail, Segment A travels along the southwest side of CR26 and crosses to the north side of CR20.
 - Segment A travels along the northwest side of CR20, and crosses Watertown Road to utilize the existing natural surface trail along its eastern edge.
 - The existing trail travels north along the east side of CR17, becoming paved just south of 7th Street S. It then crosses to the north side of Babcock Road to travel east to County Line Road SE. Segment A runs north along County Line Road SE's western edge.
 - Segment A crosses County Line Road SE to hook up with an existing trail within Lake Rebecca Park Reserve.
- Segment A follows existing trails within Lake Rebecca Park Reserve north until exiting the park at Rebecca Park Trail (no existing trail).
- Segment A travels along the east side of Rebecca Park Trail to connect to Segment B1 at its intersection with Bridge Street.

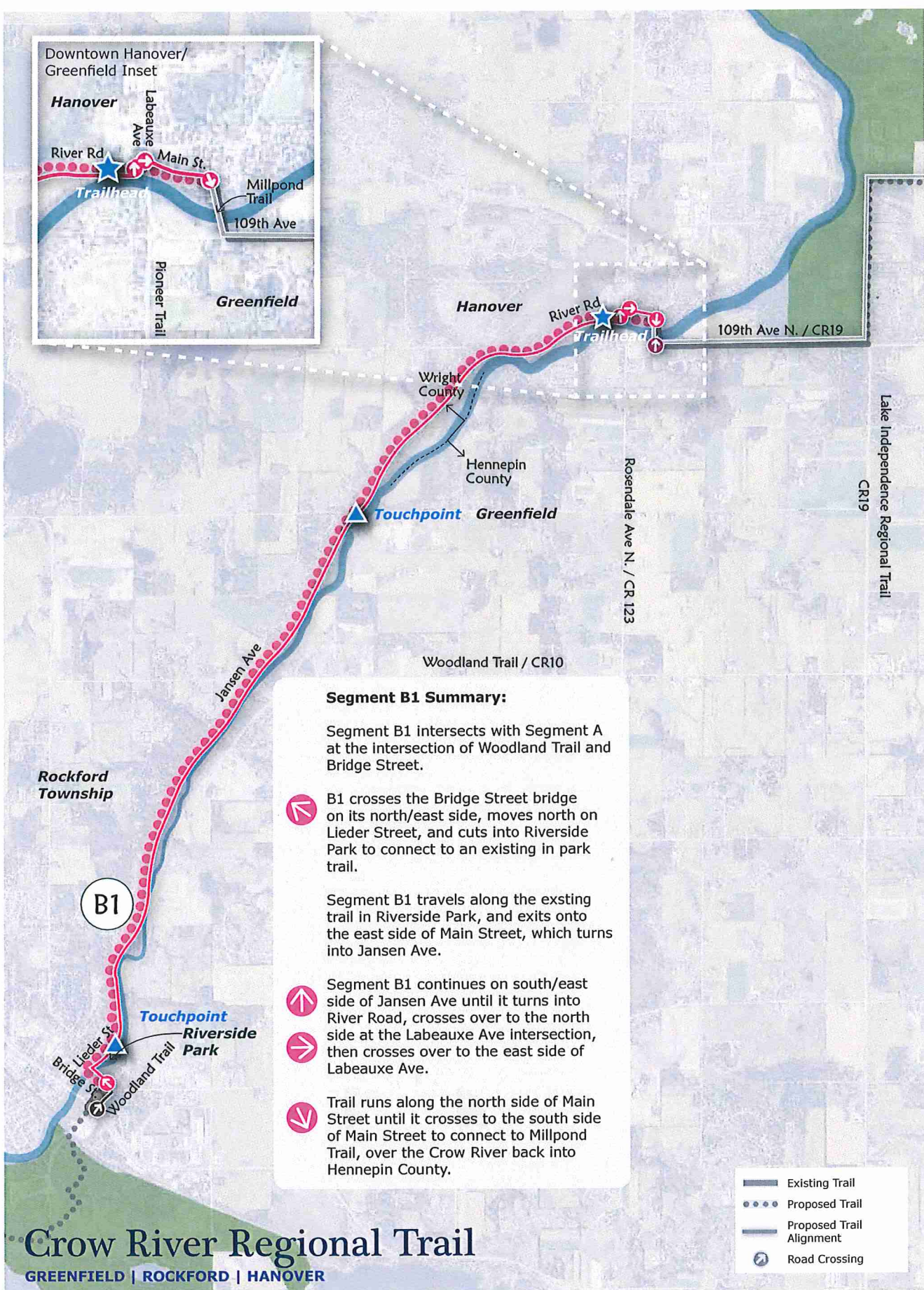


Franklin Township



Crow River
Regional Trail Master Plan





Segment B1 Summary:

Segment B1 intersects with Segment A at the intersection of Woodland Trail and Bridge Street.

B1 crosses the Bridge Street bridge on its north/east side, moves north on Liedler Street, and cuts into Riverside Park to connect to an existing in park trail.

Segment B1 travels along the existing trail in Riverside Park, and exits onto the east side of Main Street, which turns into Jansen Ave.

Segment B1 continues on south/east side of Jansen Ave until it turns into River Road, crosses over to the north side at the Labeaux Ave intersection, then crosses over to the east side of Labeaux Ave.

Trail runs along the north side of Main Street until it crosses to the south side of Main Street to connect to Millpond Trail, over the Crow River back into Hennepin County.

- Existing Trail
- Proposed Trail
- Proposed Trail Alignment
- Road Crossing

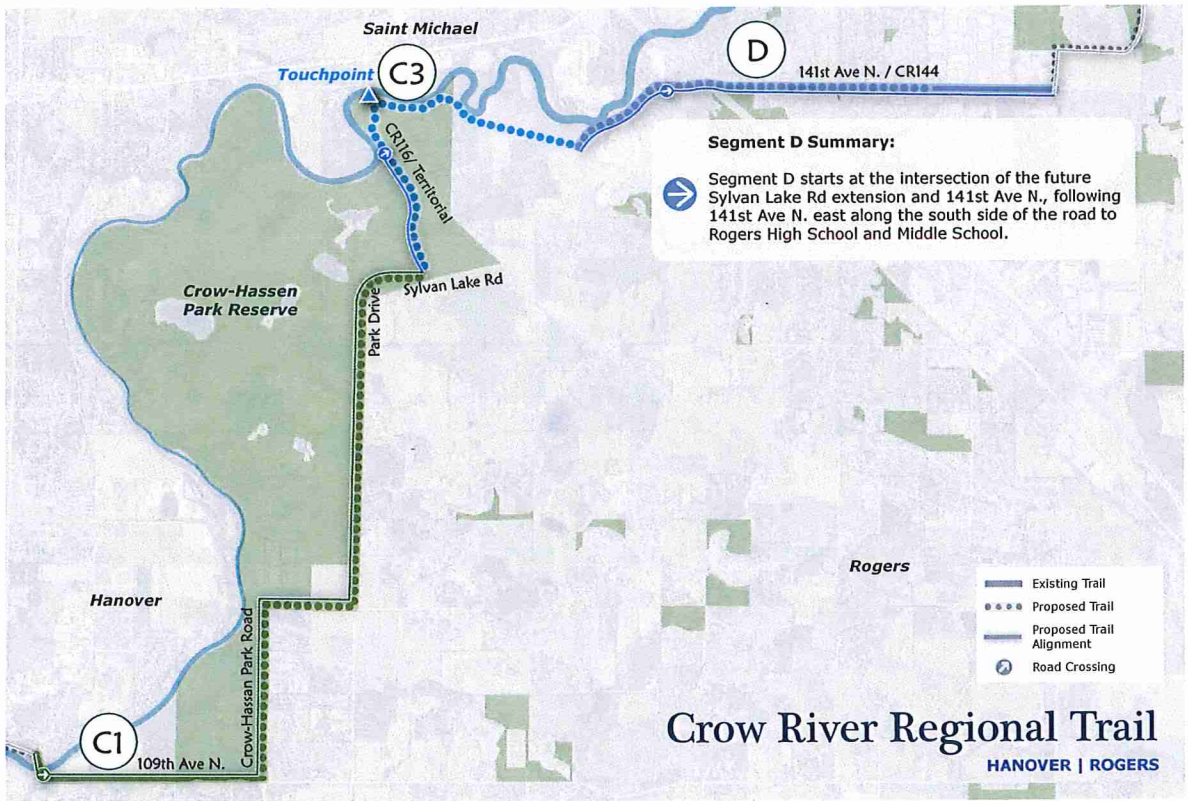
Crow River Regional Trail

GREENFIELD | ROCKFORD | HANOVER



Crow River
Regional Trail Master Plan





Crow River
Regional Trail Master Plan



Crow River Regional Trail

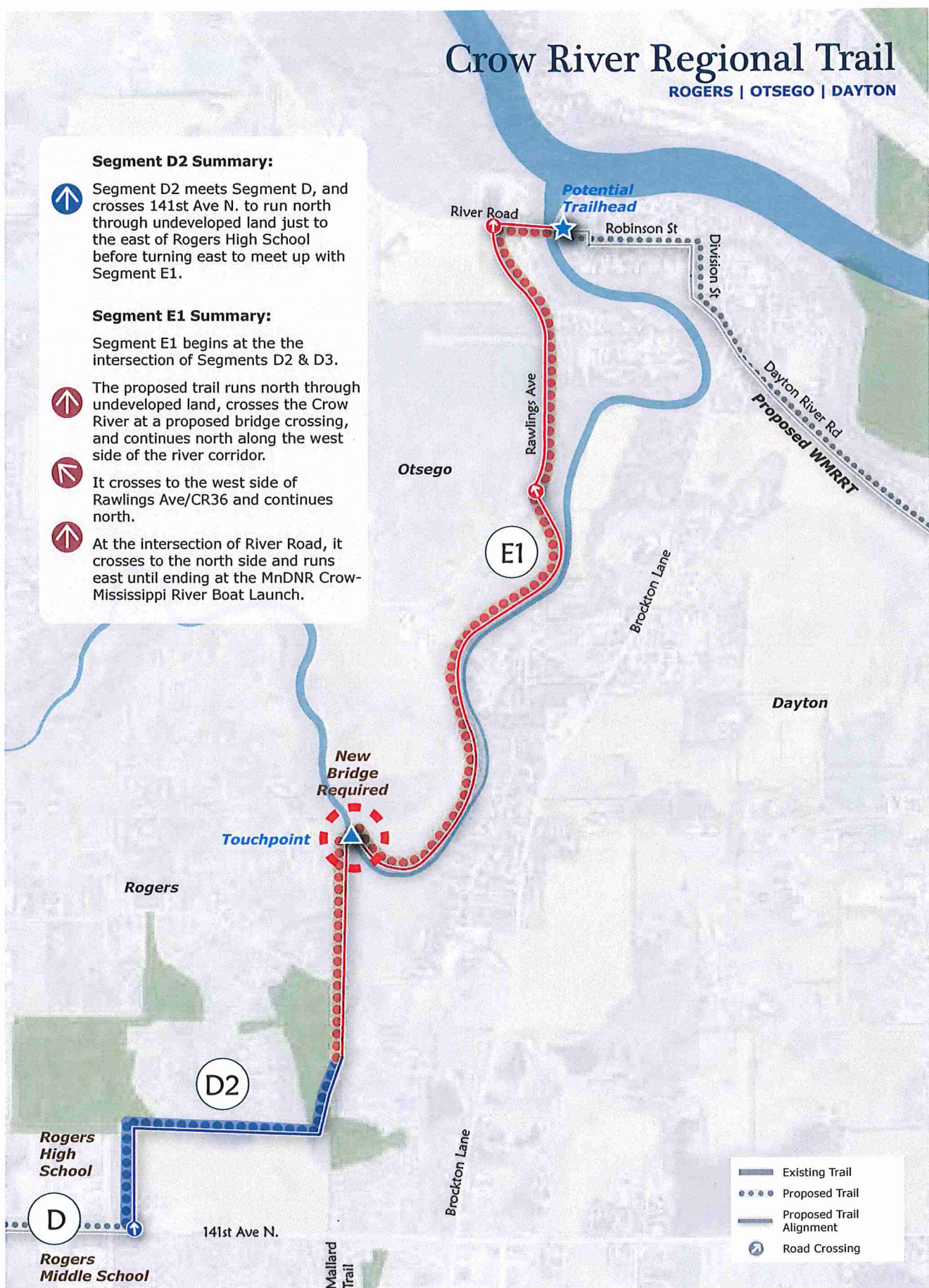
ROGERS | OTSEGO | DAYTON

Segment D2 Summary:

- Segment D2 meets Segment D, and crosses 141st Ave N. to run north through undeveloped land just to the east of Rogers High School before turning east to meet up with Segment E1.

Segment E1 Summary:

- Segment E1 begins at the intersection of Segments D2 & D3.
- The proposed trail runs north through undeveloped land, crosses the Crow River at a proposed bridge crossing, and continues north along the west side of the river corridor.
- It crosses to the west side of Rawlings Ave/CR36 and continues north.
- At the intersection of River Road, it crosses to the north side and runs east until ending at the MnDNR Crow-Mississippi River Boat Launch.



Crow River
Regional Trail Master Plan





Carver County Parks

Department of Public Works

11360 Highway 212

Suite 2

Cologne, MN 55322

Phone (952) 466-5250 Fax (952) 466-5223

www.co.carver.mn.us/parks

11360 Hwy. 212, Suite 1

Cologne, Minnesota 55322

Phone (952) 466-5200

Fax (952) 466-5223

MEMO

TO: Members of the Park Commission

FROM: Marty Walsh, Parks Director

SUBJECT: Lake Waconia Regional Park Master Plan

DATE: March 11, 2016

A public meeting was held on Wednesday, March 9, 2016 at the Waconia Event Center to review concept plans for Coney Island of the West and the main park area of Lake Waconia Regional Park. Approximately 90 people attend the meeting, reviewed the planning work and provided feedback.

Attendees were given opportunity to help prioritize the development of Coney Island and the main park area. Attached is tabulation of showing public's interest in facilities identified on the plans. The below summarizes the priorities.

Priorities for Coney Island included:

- Historical Interpretive Trail
- Naegele' Tower
- Upper Nature Trails with Over Looks
- Lower Lakeside Nature Trails
- Amblard's Point Day Use Area
- Zeglin's Point Flexible Use Area (Camping and Group Use)
- Zeglin's Point, Day Use Area

Priorities for the Main Park included:

- Interim Event Center Improvements
- Ferry Service to the Island
- Multipurpose Bituminous Trails
- Nature and Specialty Trails
- New Playground
- Improved Sledding Hill
- Central Plaza and Restrooms
- Base Camp 4- Season building

Staff will review with the Commission the concept plans, identified priorities, written comments received and obtain Commission Member feedback before preparing a report making recommendation.

Lake Waconia Regional Park Master Plan Amendment

Concept Review Summary Notes - 3/9/16 @ 6:30 PM

Main Park Priorities

ACCESS & TRAIL SYSTEM COMPONENTS:	#
Parking and Contact Station	3
Ferry Service to Island	19
Multipurpose Bituminous Trails	15
Nature and Specialty Trails (cross-country, single track bike, snow shoe, etc.)	23
Wetland Boardwalk	5
Lakefront Walk and Seating Areas	10
Adventure Trail / Base Camp Challenge Area	8
Trail Kiosks, Maps and Signage	0

RECREATIONAL SITE IMPROVEMENTS:	#
New Playground	27
Splash Pad	4
Improved Sledding Hill / Summer Use	5
Docks / Piers	8
Central Plaza Seating Area (by beach)	3
Lawn / Multi-Purpose Space	3
Natural Resource Improvements	1

PARK BUILDINGS & AMENITIES:	#
Central Plaza Restrooms, changing and concessions building	17
Central Plaza Park Event Room and Open Air Shelter Building	0
Central Plaza Equipment Rentals and Lifeguard Building	1
Base Camp 4-Season Building / Shelter with Fire Pit	9
New Event Center with Plaza Space	5
Interim Event Center Improvements (deck, minor building work)	45
Picnic Shelters	3
Lakeside Arbor	0

Coney Island Priorities

ISLAND TRAIL SYSTEM COMPONENTS:	#
Historical Interpretive Trail (trail with lot identification and overlooks)	24
Naegele's Tower (observation deck and interpretive information)	40
Upper Nature Trails with Overlooks	7
Lower Lakeside Nature Trails	7
Optional Nature Trails in Sloped Terrain with Boardwalks	4
Stair Connections	1
Trail Kiosks, Maps and Signage	5

RECREATIONAL IMPROVEMENTS:	#
Amblard's Point (SW) Day Use Area (docks, picnic space, restroom)	31
Zeglin's Point Flexible Use Area (Campsites, docks)	26
Zeglin's Point Day Use Area (docks, beach, picnic)	21
Zeglin's Point Coney Cottage Shelter and Restrooms	11
Zeglin's Point Adventure / Nature Play	0
Zeglin's Point Lawn . Gather Areas	18
Natural Resource Improvements	8

LAKE WAGONIA REGIONAL PARK

Historic Interpretation

- Focus on historic interpretation will be selective and based around an exploratory theme to discover the hidden history.
- Interpretive signage will be used in select areas to display or tell the story of the island history and existing remains.
- Lot identification may be used along the trails. This may include a stone engraved with a lot number related to an overall lot map identifying lot owners and numbers.
- Decks/boardwalks may cross some existing building foundations with use of interpretive signage.
- Use of names of specific individuals or families that relate to the history of Coney Island, Wagonia, and the local history to label use areas of the island may be used in naming of island areas and overlooks. The actual names would be determined in conjunction with County officials and local historians. For the purposes of the Master Plan, temporary names have been used and are shown in italics.

A Historic Interpretive Trail

- 6'-8" Wide Granite or Aggregate Trail
- Pedestrian Use Only with Self-Guided Tour
- Walking/Hiking/Snow Shoe/Cross-Country Ski
- Historic Lot Identification
- Interpretive Signage in Select Areas
- Overlooks with Historical Reference (ie: Mischief Overlook)

B Rookery Trail

- Part of Historic Interpretive Trail
- Gated Off During Nesting Season

C Nature Trail

- 4'-5' Wide Earthen or Aggregate Trail
- Boardwalks as Necessary
- Overlooks
- Built into Slopes as Necessary
- Optional Routes (depending on constructability)

D Amblard's Point Day Use Area

- Stabilize/Restore Walls
- Day Use Docks
- Island Kiosk / Map
- Restroom
- Picnic Space
- Fishing Piers
- Trail Access

E Boat Beaching Area

F Dock Access

G Naegele's Tower

- Accessible Lower Deck with Ramp Access
- Upper Observation Deck
- Rookery Blinds & Educational Signs
- Interpretive Historical Displays

H Zeglin's Point Flexible Use Area

- Day Use & Campsite Docks / Fishing Piers
- Campfires (accommodates individual or group use; tent sites to portable camper cabins, summer & winter camping; reservable, lakeside and wooded sites)
- Open Lawn and Picnic Space (historic lawn location)
- Trail Access
- Snowmobile Access for Winter Gatherings & Use
- Coney Cottage Picnic Shelter with Restrooms, "Garage Door", Walls, and Fireplace

I Zeglin's Point Day Use Area

- Day Use Docks / Fishing Pier
- Entrance Island Kiosk / Map
- Shared Coney Cottage Picnic Shelter
- Small Informal Beach
- Adventure / Nature Play Experience
- Open Lawn and Picnic Space (historic lawn location)
- Trail Access (accessible route to tower)

Landscape & Natural Resources

- Highlight Historic Plant Communities (from native to introduced plants brought from original landowners)
- Invasive Species Control Plan
- Stabilize Steep / Eroded Slopes
- Protect Lake Edge
- Naturalize Lake Edge in Undeveloped Areas



CARVER COUNTY PARKS

Coney Island of the West Preliminary Master Plan



LAKE WAGONIA REGIONAL PARK



- A Multi-Purpose Trail**
 - 8'-10' Wide Asphalt Trail (pedestrians, bikes)
 - Interpretive Signage in Select Areas
 - Overlooks with Historical Reference

- B Church Property**
 - Potential Realigned Entrance Road
 - Potential Future Acquisition (may be used for maintenance building location)

- C Entrance & Contact Station**

- D DNR Boat Launch**

- E Swimming Beach**

- F Play Experience**
 - Fun & Challenging Play Experience
 - Separated Age Appropriate Play
 - Sensory Elements
 - Highly Inclusive / Accessible
 - Potential Splash Pad Area

- G Picnic Shelter**

- H Parking**
 - Main Parking Lot: to Stalls
 - Turnaround Lot: to Stalls
 - Island Pollinator Gardens
 - Adjacent Infiltration Basins

- I Central Plaza**
 - Entrance Kiosk / Park & Trail Map
 - Bike Racks
 - Plaza / Cafe Style Seating
 - Shade Structures
 - Relates to Beach, Lawn & Picnic Spaces
 - Restroom, Changing Room & Concessions Bldg
 - Park Program / Meeting Room Bldg with Open Air Picnic Shelter Area
 - Rental Equipment Building

- J Central Pier**
 - Pedestrian Pier (no fishing)
 - Island Ferry Transfer Location
 - Potential Special Event Pier (ie: triathlon/swim events)

- K Boat Beaching Area**

- Interim Event Center Plan**
 - Deck Facing Lawn / Lake
 - Parking Lot Phased
 - Relates to Lawn / Event Space

- Landscape & Natural Resources**
 - Highlight Plant Communities (native woods, wetlands and prairie)
 - Invasive Species Control Plan
 - Stabilize Steep / Eroded Slopes
 - Protect Lake Edge
 - Naturalize Lake Edge in Undeveloped Areas

- L Small Beach & Dock**
 - Non-Motorized Watercraft Dock & Beach
 - County Boat Slips (ie: patrol boats)
 - Rental Storage Area (ie: canoe racks)

- M Fishing Pier**

- N Lakefront Walk**
 - curvilinear / Flowing walk design
 - Multiple Seating / Picnic Spaces
 - Shade Structures
 - Views of Lake

- O Lakeside Arbor**

- P Small Lawn Game Area**
 - Lawn bowling
 - Volleyball

- Q Large Multi-Purpose Lawn**
 - Informal Sport Space
 - Event Space (ie: weddings, music events, triathlons, overflow parking)

- R Park Event Building**
 - Upper Level Deck Overlooking Lake
 - Lower Patio Facing Lake, Lawn & Arbor
 - Meeting rooms (park programs, venue space)
 - Restrooms

- S Base Camp Area**
 - 4-Season Picnic Shelter with Restrooms, "Garage Door" Walls, and Fireplace (winter warming house)
 - Patio with Fire Pit
 - Lawn Event Space (ie: challenge course, ice skating)

- T Sledding Hill**
 - Tow Rope
 - Summer Use (ie: challenge uphill course, biking, summer strolling)

- U Adventure Trail**
 - 4-5' Wide Earthen or Aggregate Trail
 - Challenge Areas (ropes course, tree walk, etc.)
 - Upper Overlook



- Informal & Specialty Trails (not shown)**
 - Snow Shoe, Single Track Mountain Bike, Cross-Country Ski, etc.
 - Integrated into Natural Areas at County's Discretion
 - Non-Paved



Main LWRP Preliminary Master Plan

